

PROVIDENCE, R. I.
CITY ENGINEER'S OFFICE.
STREET LINE DEPT.

Nov 6 1883

09403

Providence R.I.

This map accompanies
our report of this date

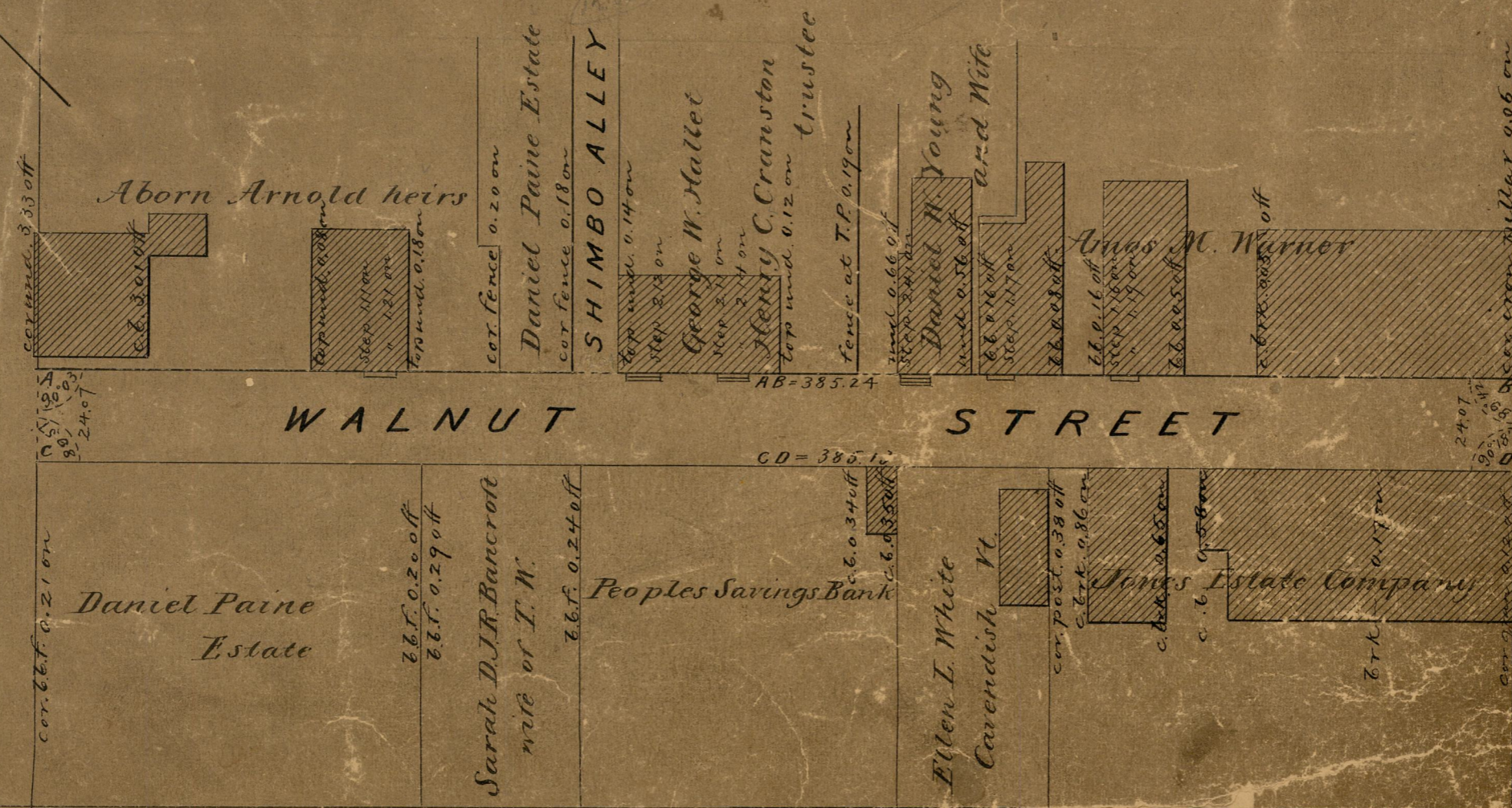
MAP OF

WALNUT STREET

FROM WASHINGTON ST. TO WESTMINSTER ST.

SCALE 40 FEET PER INCH.

WASHINGTON STREET



81
F-1

81
F-1