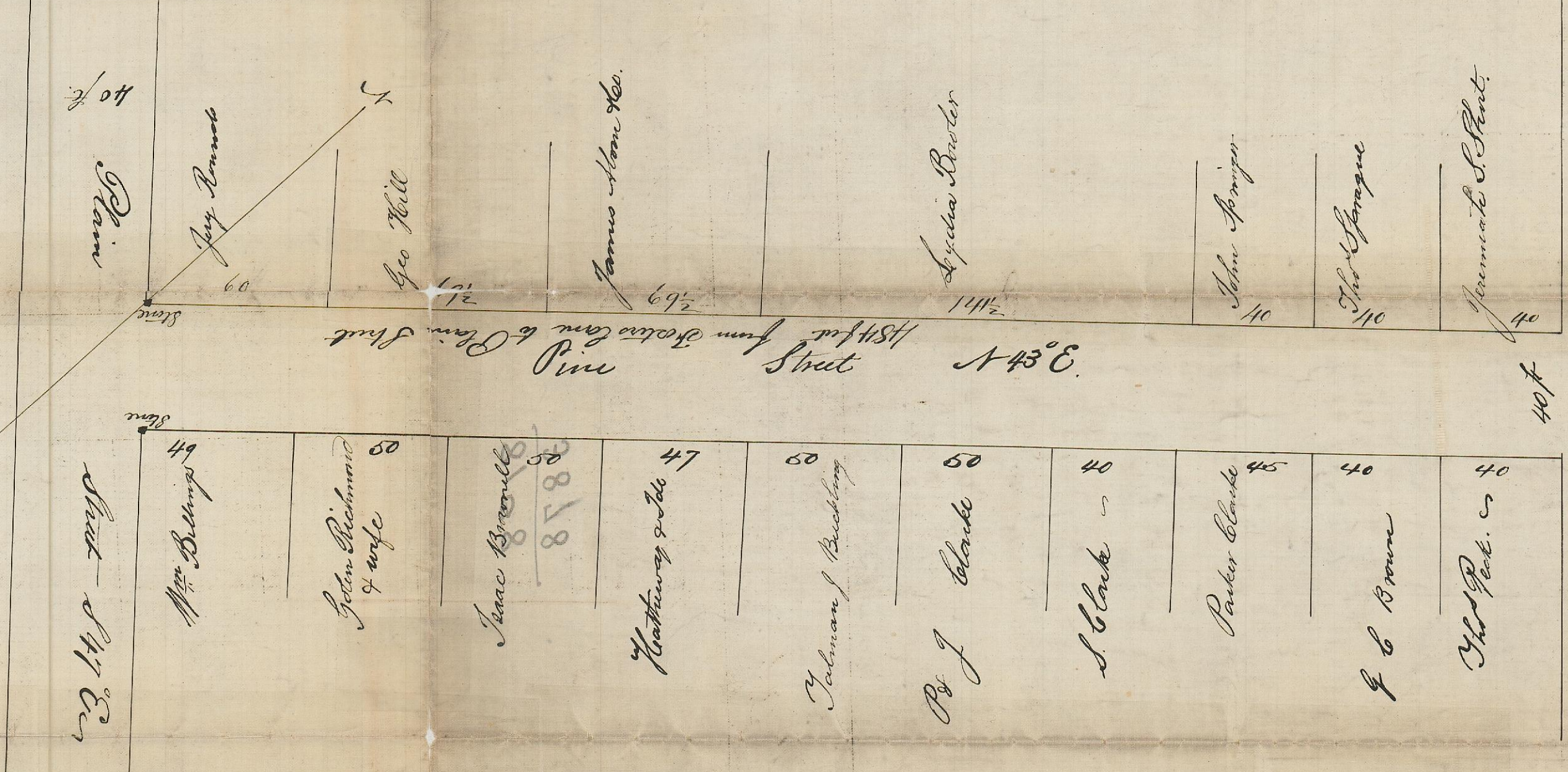


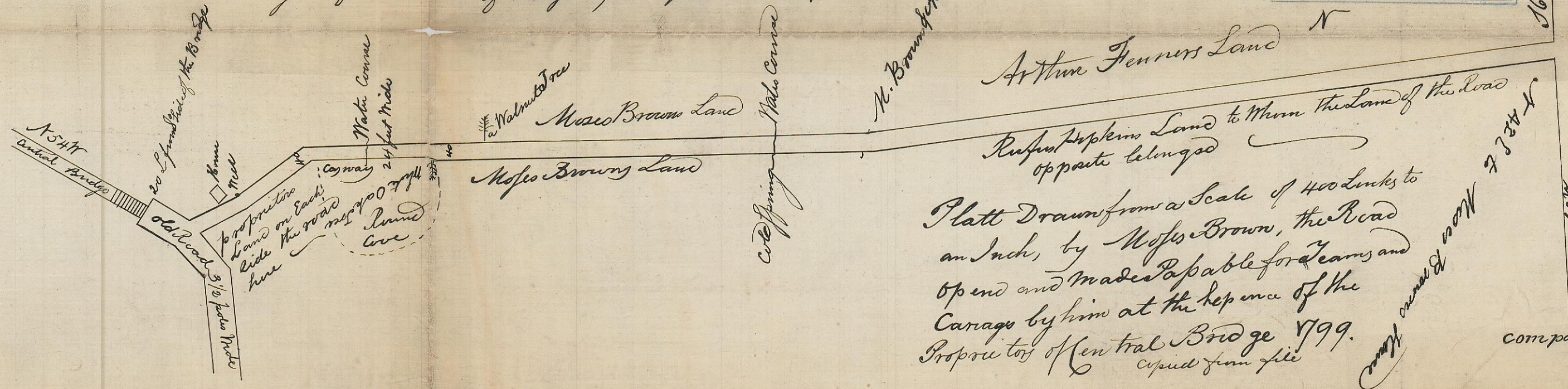
CITY ENGINEER'S OFFICE  
 STREET LINE DEPT.  
 MAR. 23, 1881.  
 06596

Survey and plat May 14, 1897  
 by Benson & Co.  
 Done to plat to our note  
 copies furnished



This Road begins at the abutment of the Bridge 12 feet from  
 the SW corner of the Plank and runs on the South side N 54° W 174 Links  
 then turns S 74° W to the NW corner of the proprietors House 139 Links  
 thence the same course 80 Links more to the NW corner of the well curb  
 then S 60° W 300 L then W 5 1/2° N 263 L to middle of Water Course, thence  
 same course to a Walnut Tree on the Bank for a Range Tree 440 L.  
 thence to the Water course below old Spring 1069 thence to Moses  
 Browning of Arthur Fenner's Corner 365 L then W 2° S 2600 to the  
 old Road the bound there being the middle of Gov Fenner's Wall  
 that being the former line of his & Rufus Hopkins Lands.

OFFICE No. 3878  
 DRAWER " 81  
 SHEET " G-8



Compared.