

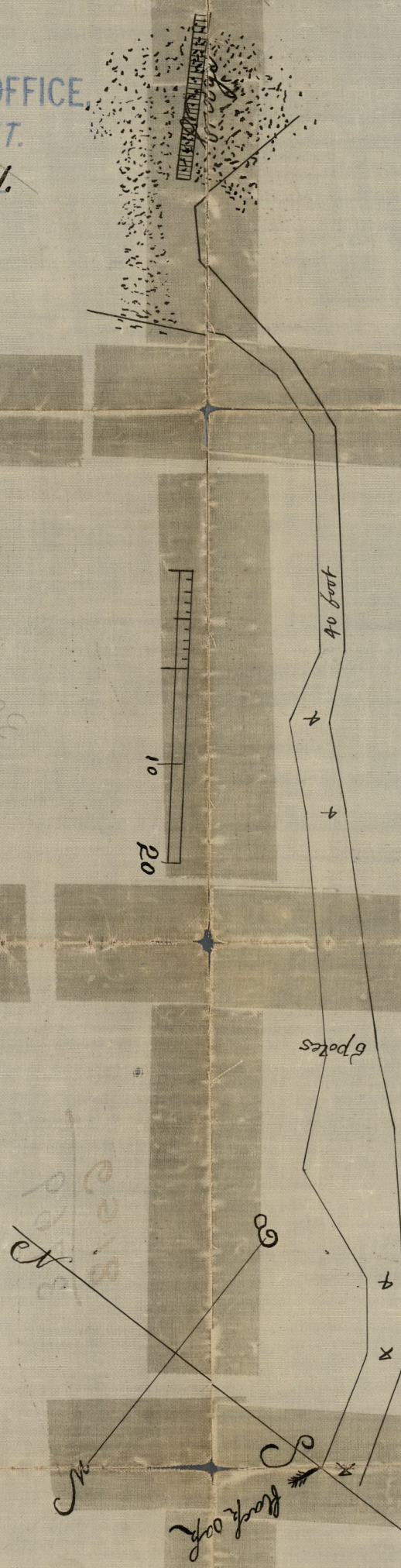
Courses R  
 N 35 W 38  
 N 10 W 16  
 N 29 W 8  
 N 51 W 8  
 N 46 W 32

We the Subscribers being appointed by the town Council of Providence to lay out a high way from Ezekiel Woodward's Land to the high way that comes over the River by the old Sawmill & have laid out said way from Rhoad to Rhoad Street two Rods wide according to the plan laid out the 9<sup>th</sup> day of September A D 1758

Isaac Hawkins  
 Nathan Pearce  
*copied from file.*

Woodward's Land

CITY ENGINEER'S OFFICE  
 STREET LINE DEPT.  
 MAR. 23, 1881.  
 06597



A Draught of a highway Layed out by Order of a Town Council held at Providence the 11<sup>th</sup> day of June A D 1737 from way by fast Bridge to a parting of the paths at the John Shop beginning at a black-oak tree standing at the waterworks formerly from D. Phelps from thence N 91 1/2 E 13 poles thence N 52 E 7 poles thence N 12 E 13 poles thence N 61 E 12 poles thence N 47 E 24 poles thence N 42 E 10 poles thence N 75 E 8 poles thence N 71 E 22 poles and 8 feet thence N 72 E 19 poles and 13 feet thence N 2 w 6 poles and 12 feet thence N 25 w into the salt water to low water mark then along the shore at low water mark easterly until it come to the low sand bridge the said way to be bounded further easterly and southerly from the afore said bridge according to a draught Layed out this 11<sup>th</sup> day of June annoque Domini 1737

Thomas Harris  
 Tolleration Harris  
 Ephraim Smith  
 David Waterman Surveyor  
*copied from file.*

By W  
 and according to the best of our knowledge we have not Layed the above said highway upon any particular man's land being on land by us supposed to abate formerly Layed out by a Jury as a highway

OFFICE No. 3769  
 DRAWER ,, 81  
 SHEET ,, 4-9

Compared.

D.B. 9/1/76