

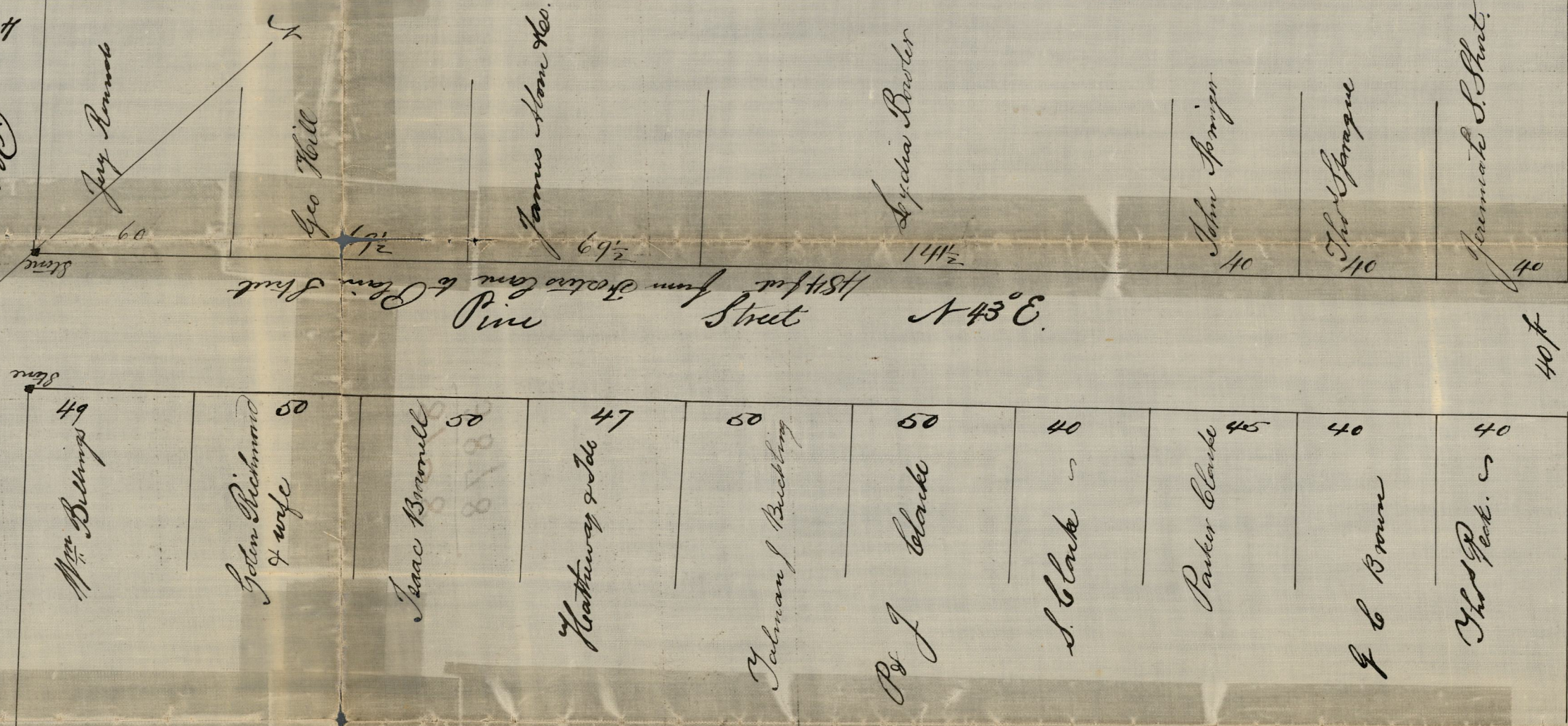
MAR. 23, 1881.

06596

Surveyed and Platted May 14 1897  
 by Bernard Lockwood  
 Done to plat to an old  
 copy of same from file

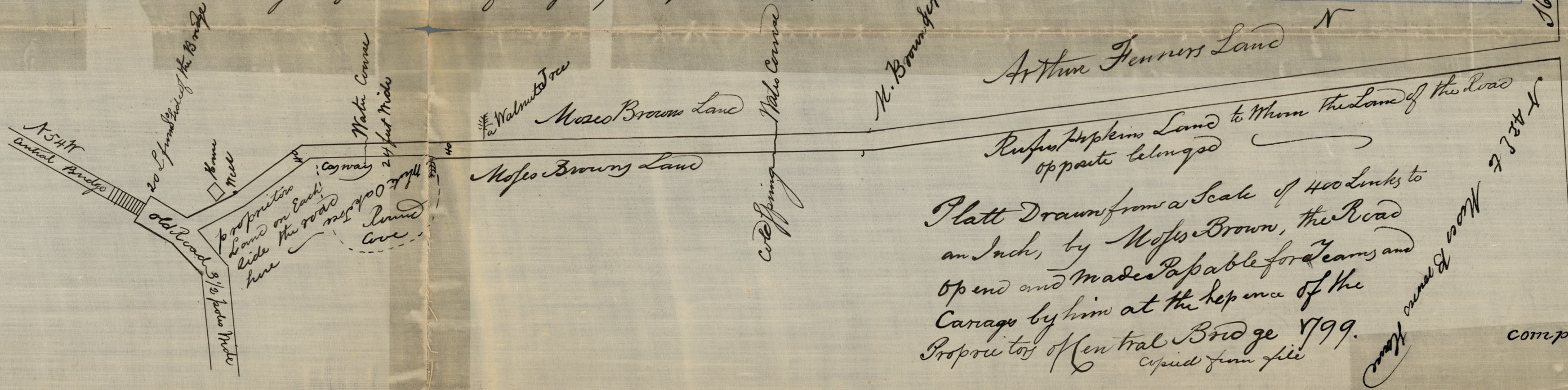
No 7  
 Platted

Street S 47° E



This Road begins at the abutment of the Bridge 12 feet from  
 the SW corner of the Plank and runs on the South side N 54 W 174 links  
 then turns S 74 W to the NW corner of the proprietors House 139 links  
 thence the same course 80 Links more to the NW corner of the well sub  
 then S 60 W 300 L then N 5 1/2 W 263 L to middle of Water Course, thence  
 same course to a Walnut Tree on the Bank for a Range Tree 440 L.  
 thence to the Water course below old Spring 1069 thence to Moses  
 Browns of Arthur Jenners Corner 365 L then N 7 1/2 S 2600 to the  
 old Road the bound there being the middle of Gov Jenners Wall  
 that being the former line of Geo & Rufus Hopkins Land.

OFFICE No. 3878  
 DRAWER " 81  
 SHEET " G-8



Plat drawn from a Scale of 400 Links to  
 an Inch, by Moses Brown, the Road  
 opened and made passable for teams and  
 Carriage by him at the request of the  
 Proprietors of Central Bridge 1799.

Compared

167580 L to Gov - Jenners  
 House

167580 L to Gov - Jenners  
 House