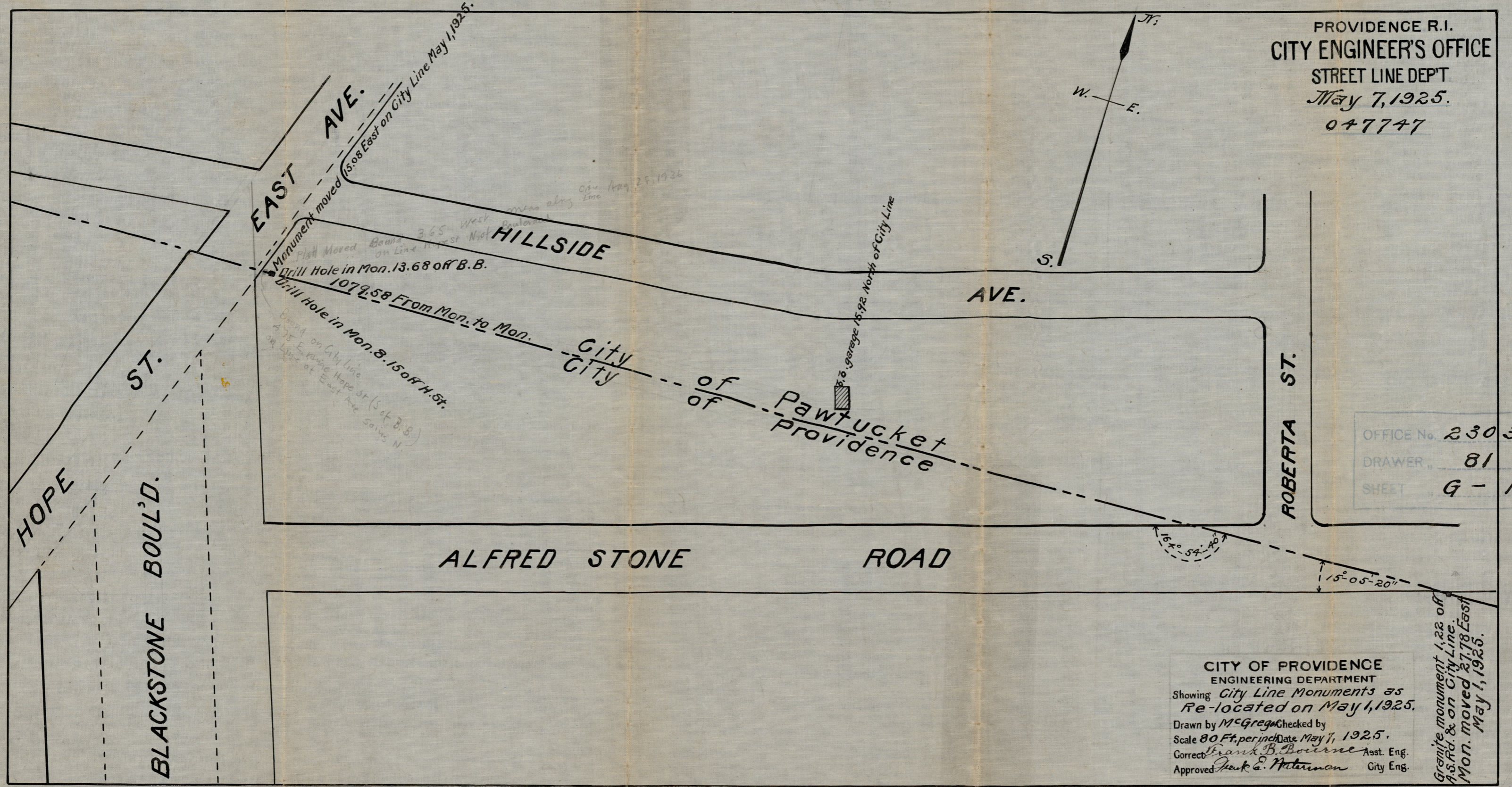


PROVIDENCE R.I.
 CITY ENGINEER'S OFFICE
 STREET LINE DEPT
 May 7, 1925.
 047747



Monument moved
 15.08 East on City Line May 1, 1925.

Drill Hole in Mon. 13.68 off B.B.

1079.58 From Mon. to Mon.

Drill Hole in Mon. 8.15 off H. St.

B.B. Garage 15.92 North of City Line

OFFICE No. 23034
 DRAWER 81
 SHEET G-19

CITY OF PROVIDENCE
 ENGINEERING DEPARTMENT
 Showing City Line Monuments as
 Re-located on May 1, 1925.
 Drawn by McGregg Checked by
 Scale 80 Ft. per inch Date May 7, 1925.
 Correct Frank B. Bourne Asst. Eng.
 Approved Frank E. Peterson City Eng.

Granite monument 1.22 off
 A.S. Rd. & on City Line.
 Mon. moved 27.78 East
 May 1, 1925.