

The limits of Gaspee Street as hereby established are indicated by the letters A, B, C, D, E, & F.

Plat of Gaspee Street

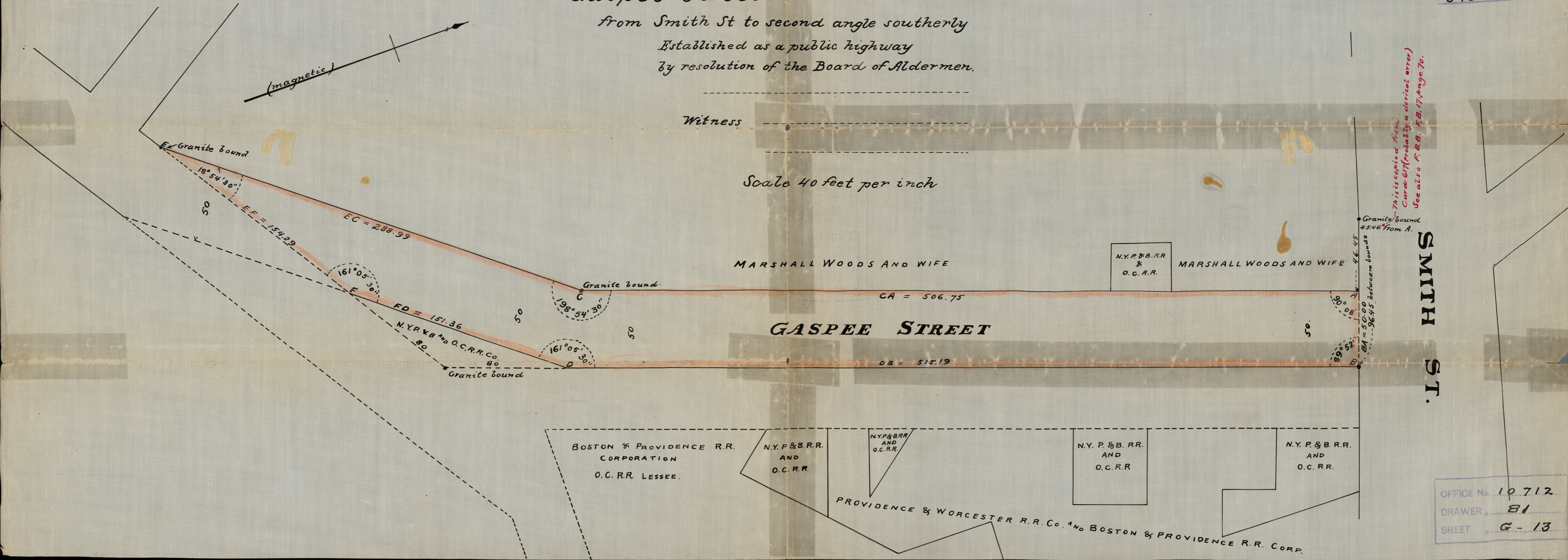
from Smith St to second angle southerly
Established as a public highway
by resolution of the Board of Aldermen.

PROVIDENCE, R.I.
CITY ENGINEER'S OFFICE
STREET LINE DEPT.
Feb. 16, 1922
045516

Witness

Scale 40 feet per inch

This is copied from Card 617 (probably a clerical error) See also F. B. B. F. B. 17, page 70.



SMITH ST.

OFFICE No. 10712
DRAWER 81
SHEET G-13