

CITY ENGINEER'S OFFICE
STREET LINE DEPT.

CITY-ENGINEER'S OFFICE,
STREET LINE DEPT.

Dec. 13, 1869

0826

MAP

of proposed extension of

THURBER'S AVENUE

TO THE HARBOR LINE

made by order of GEO. T. SPICER, JOSEPH B. MATHEWSON & JOSHUA R. BROWN.

A Committee appointed by the Hon. Board of Aldermen Oct. 13th 1869.

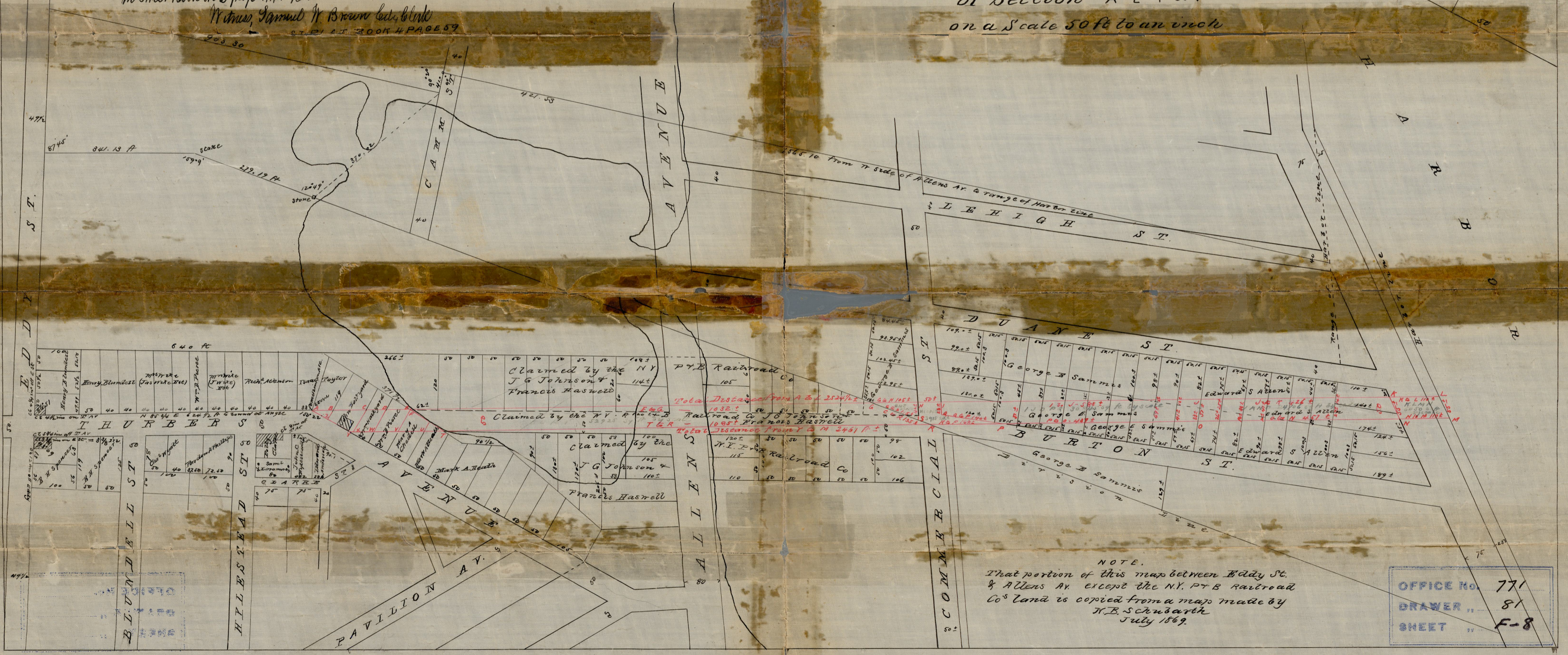
by C. E. PAINE

This Map accompanies the report of the Committee received by the Board of Aldermen December 13, 1869 and recorded in Street Book No 2 page 444 &c.

Scale 160 ft to an inch

Witness, Samuel H. Brown Secy. Clerk

ENLARGED PLAN
of Section A-E-T & Y
on a Scale 50 ft to an inch



NOTE.
That portion of this map between Eddy St. & Allen Av. except the N.Y. P.T.B. Railroad Co's land is copied from a map made by N.B. Schubarth July 1869.

OFFICE NO. 771
DRAWER " 81
SHEET " F-8

Compared