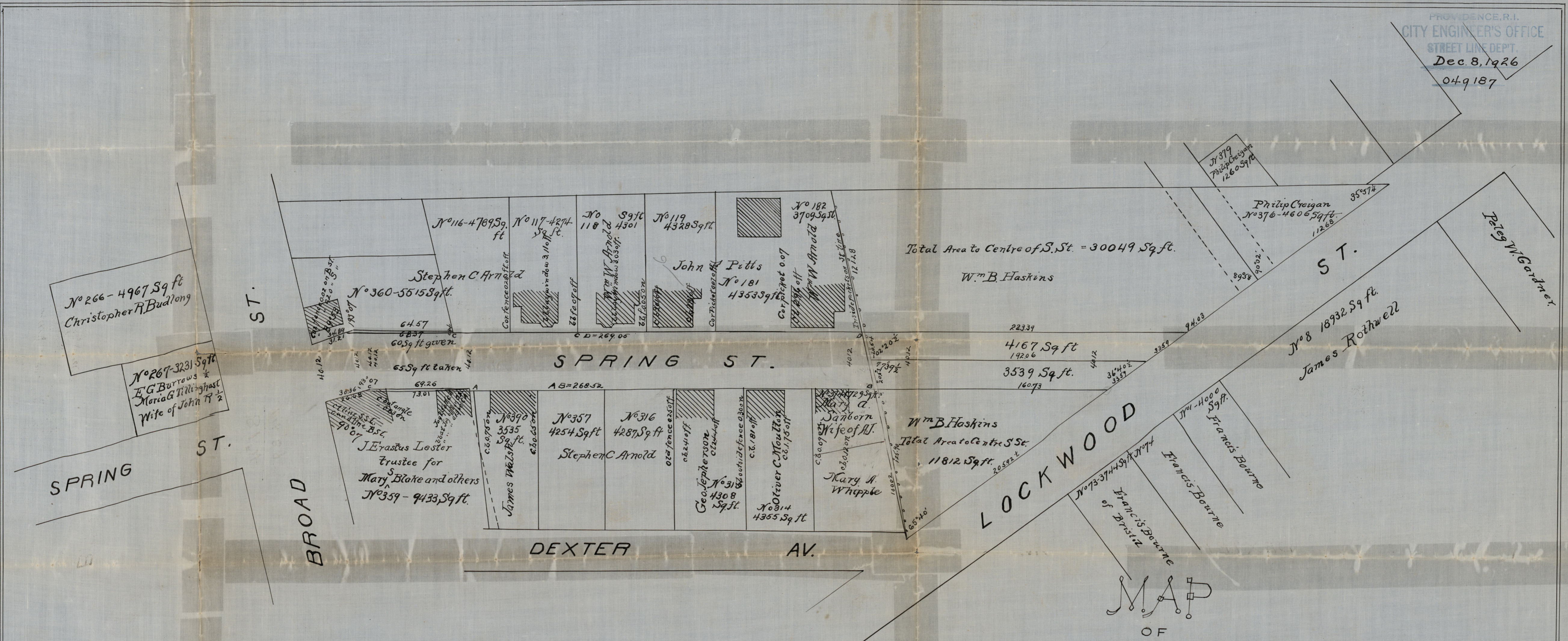


PROVIDENCE, R.I.
 CITY ENGINEER'S OFFICE
 STREET LINE DEPT.
 Dec. 8, 1926
 049187



MAP OF SPRING ST.

FROM BROAD ST. TO LOCKWOOD ST.

MADE BY ORDER OF FREDERICK BURGESS WILLIAM H. BOWEN.

JOSHUA R. BROWN MATHEW W. INGRAHAM AND JOHN C. PEGRAM COMMISSIONERS.

APPOINTED BY THE HON. SUPREME COURT MARCH TERM AD. 1873.

Scale 40 ft. per inch.

BY C.E. PAINE CITY ENGINEER
 St. plat book 57.10.

OFFICE NO. 1489
 DRAWER 81
 SHEET F-4

THIS MAP ACCOMPANIES OUR REPORT OF THIS DATE
 [See Street Book No. 3 Page 128]

Fredrick Burgess
 William H. Bowen
 Joshua R. Brown
 MatheW W. Ingraham
 John C. Pegram
 Providence Sept. 12 1873.