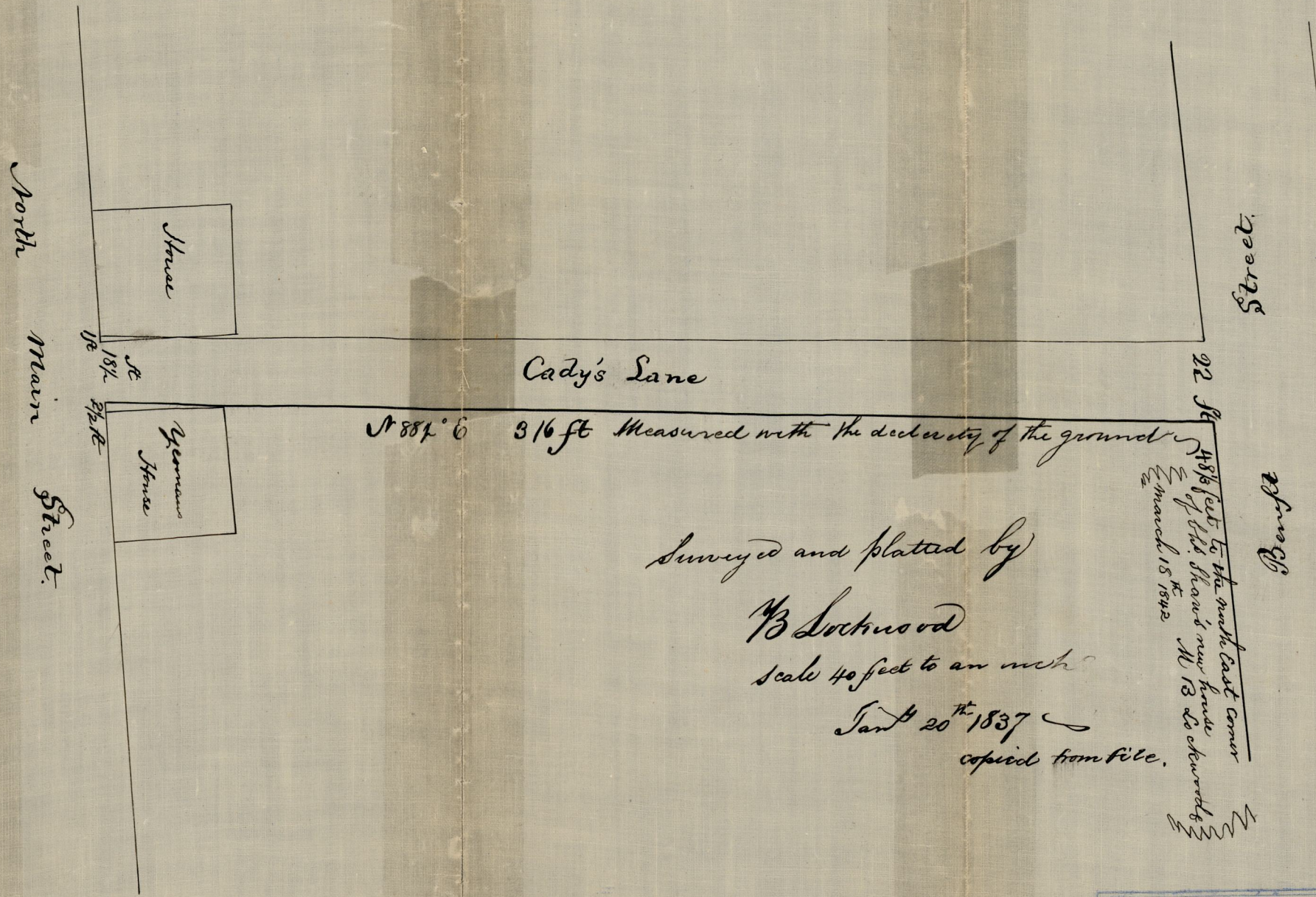


JAN 10 1881

06368



Surveyed and platted by

B Lockwood

Scale 40 feet to an inch

Jan^y 20th 1837

copied from file.

148 1/2 feet to the north east corner of the house M. B. So. & Seward's March 15 1842

2317
81 138

OFFICE No. 5314
DRAWER " 81
SHEET " F-38

Compared