

JAN 10 1881

06360

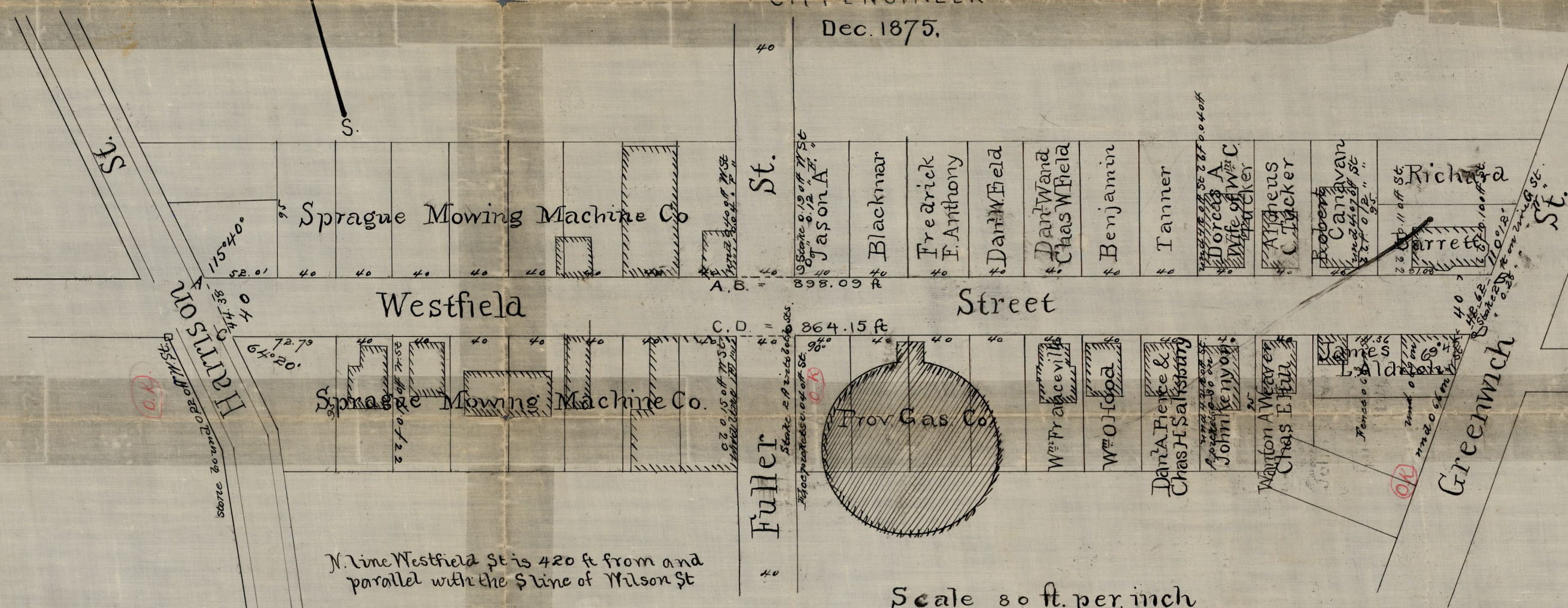
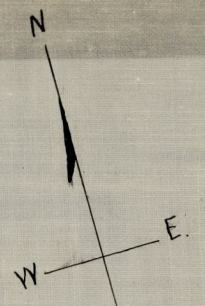
PLAN OF WESTFIELD ST.

From GREENWICH ST. to HARRISON ST.

Made by order of the
HON. BOARD OF ALDERMEN

By C.E. Paine
CITY ENGINEER

Dec. 1875.



Scale 80 ft. per inch

Declared a public highway December 2, 1875
Witness Samuel W. Brown City Clerk

ST. R. B. SP. 44.

OFFICE No. 5306
DRAWER " 81
SHEET " F-30

Compared,