

Warren Street extends from Fuller St, which is not a Public Highway, to Greenwich St as established Sept. 30 1875

CITY ENGINEER'S OFFICE

STREET LINE DEPT.

MAP OF

WARREN ST.

FROM FULLER ST TO GREENWICH ST.

CITY ENGINEER'S OFFICE.
STREET LINE DEPT.

Mar. 15, 1877

03752

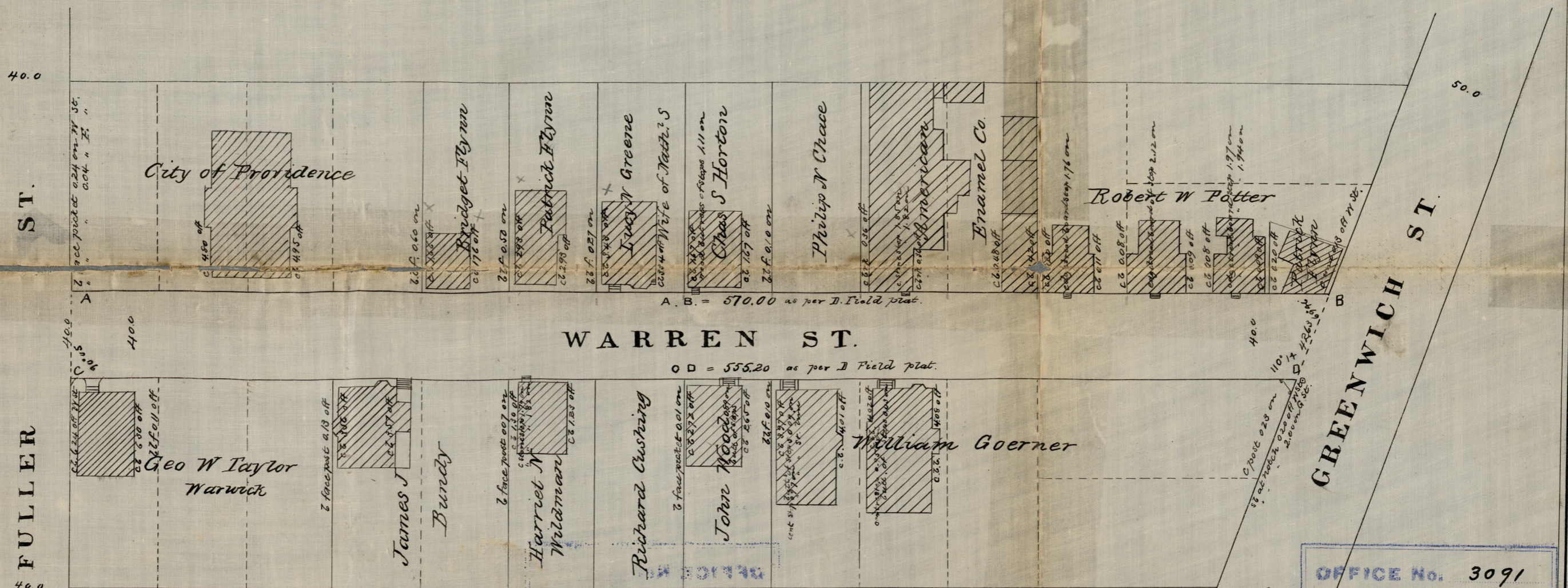
Declared a public highway by the Board of Aldermen March 22 1877

Witness, Samuel W. Brown City Clerk

City Engineers Office
Mar. 15 1877

St plat book 6 page 18

Scale 50 ft per Inch



A. B. = 570.00 as per D. Field plat.

WARREN ST.

O D = 555.20 as per D Field plat.

Note - The present established line of Greenwich St. is $\frac{25}{100}$ of a foot easterly of that used on the D Field Plat.

OFFICE No. 3091
DRAWER ,, 81
SHEET ,, F-3

Compared