

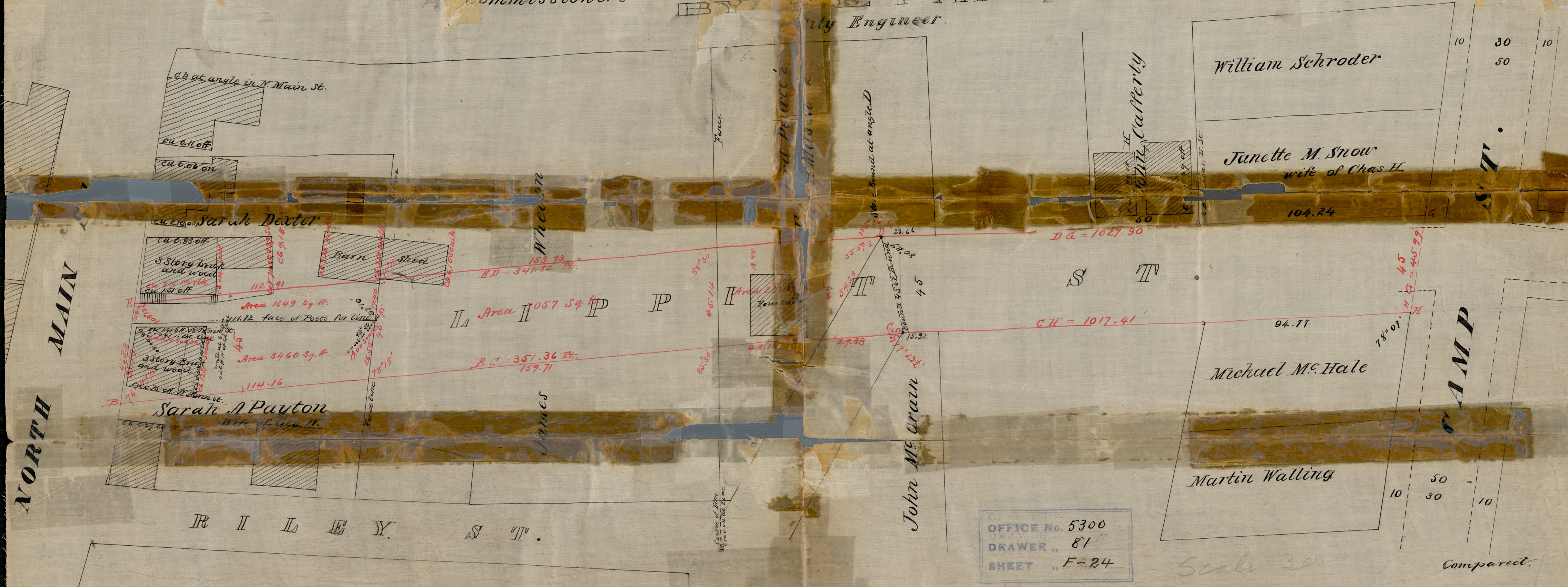
This map accompanies our report of this date
 August 24, 1875.

Amos W. Snow
 Loren M. Brayton
 Joseph G. Johnson
 Joseph C. Frank
 Commissioners

PLAN
 of the
 Proposed Lay out and Extension
 OF
 LIPPITT STREET

FROM
 N. MAIN ST. TO N. MAIN ST.
 BY
 E. P. PAINE
 City Engineer.

Scale 30 ft to an in.
 S.C. & B.P. 47



OFFICE No. 5300
 DRAWER 81
 SHEET F-24

Scale 30

Compared.