

A plat of Benefit Street widened say from Trapit Street to Power Lane it is widened four feet on the west side + six feet on the East side Davis's House four feet on it being the former range of the Street from thence it rangeth on said west side with the general range of The House to said Power's Lane and the East Line of the Street is fifty feet from said range - Course N 28° W 1027 feet

from Power's Lane to Benevolent Street it is widened ten feet on the East side and is fifty feet wide Course N 81° 3/4 W 725 feet

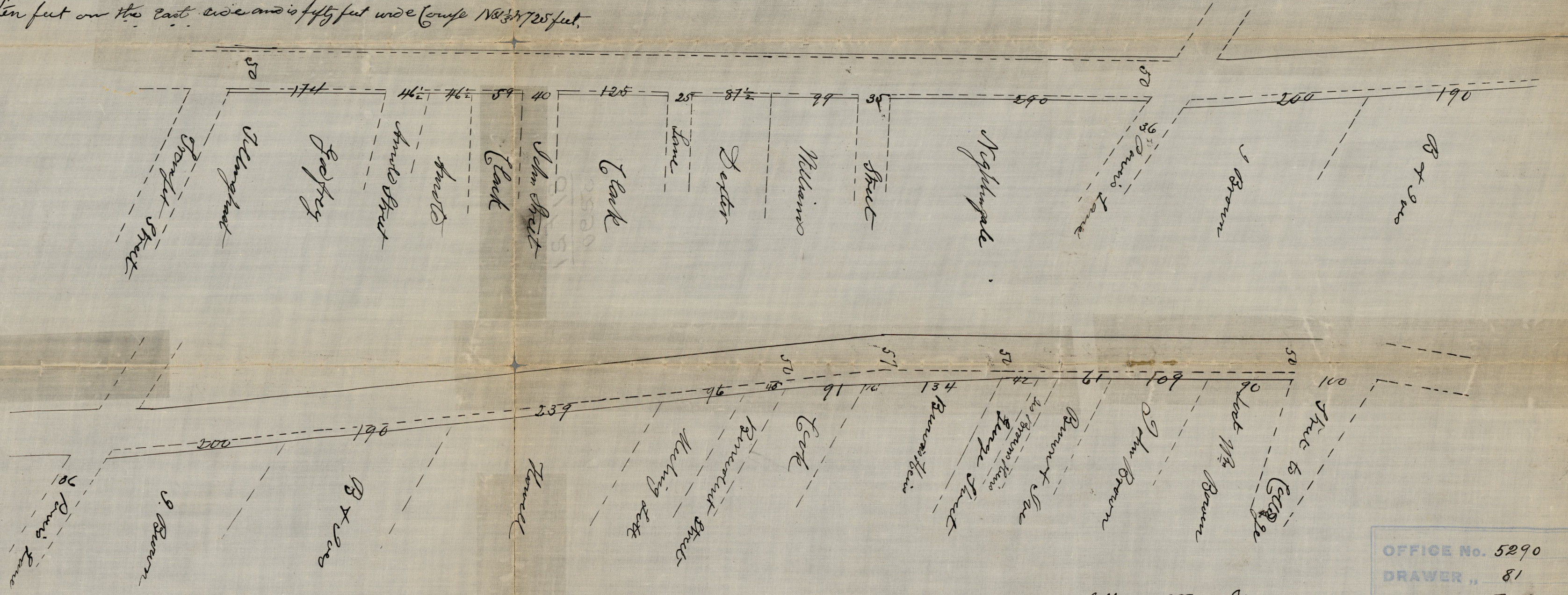
from Benevolent Street to George Street it is straightened and widened ten feet at the said Streets + seventeen feet at the Cook - Course N 28° W 241 feet
 from George Street to Street to the College it is widened ten feet on said East side - Course N 24 1/2° W 281 feet

CITY ENGINEER'S OFFICE.
 STREET LINE DEPT.

Jan 3. 1881.

06342

BENEFIT ST.



Surveyed and plotted by B. J. and Anthony
 16th 5th 1801

Scale 100 feet to an Inch

OFFICE No. 5290
 DRAWER ,, 81
 SHEET ,, F-21

Compared.