

03726

MAP OF BUTLER ST

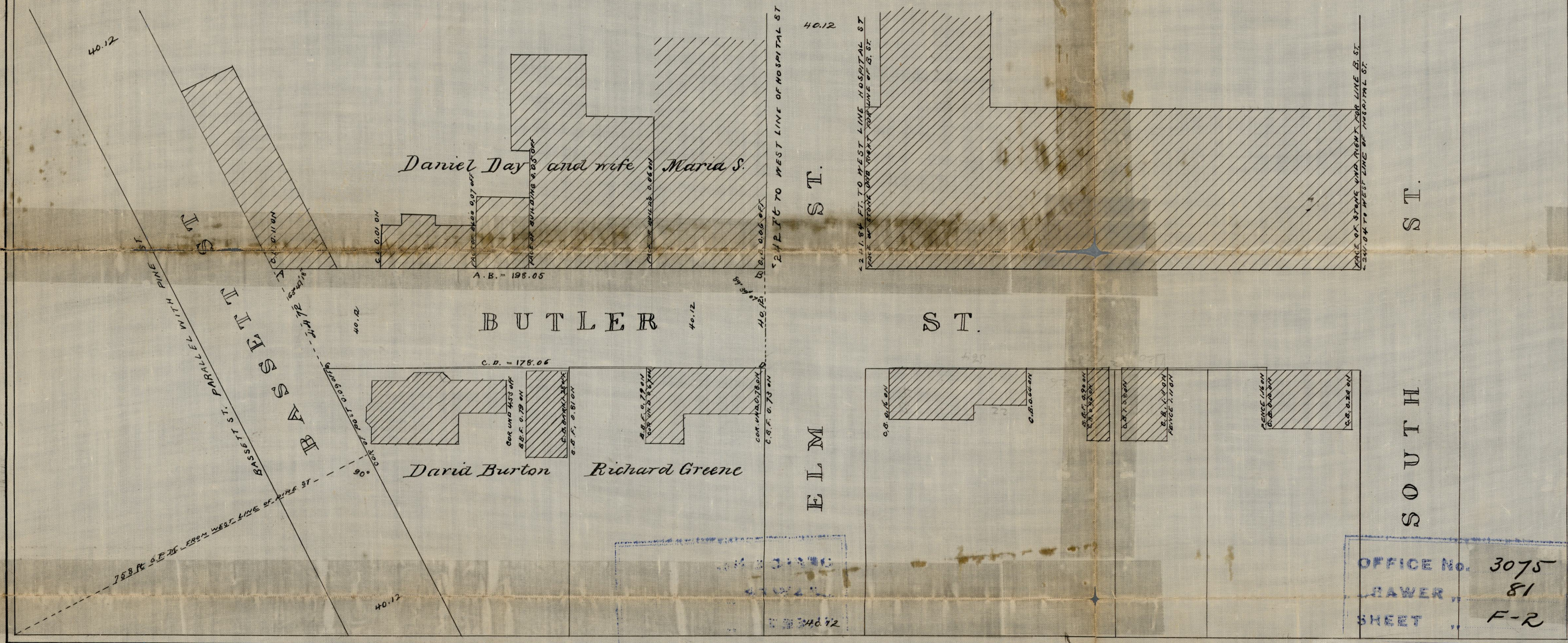
FROM ELM ST TO BASSETT ST

City Engineer's Office Feb. 1877.

Scale 40 ft per Inch
S.T.P.B. 6. P. 17.

Declared a public highway by the Board of Aldermen, March 15, 1877.
Witness Samuel W. Brown City Clerk

Butler St extends from Elm St.
as established April 2, 1849,
to Bassett St. as established
Aug 4, 1845.



OFFICE No.	3075
RAWER	81
SHEET	F-2

Compared