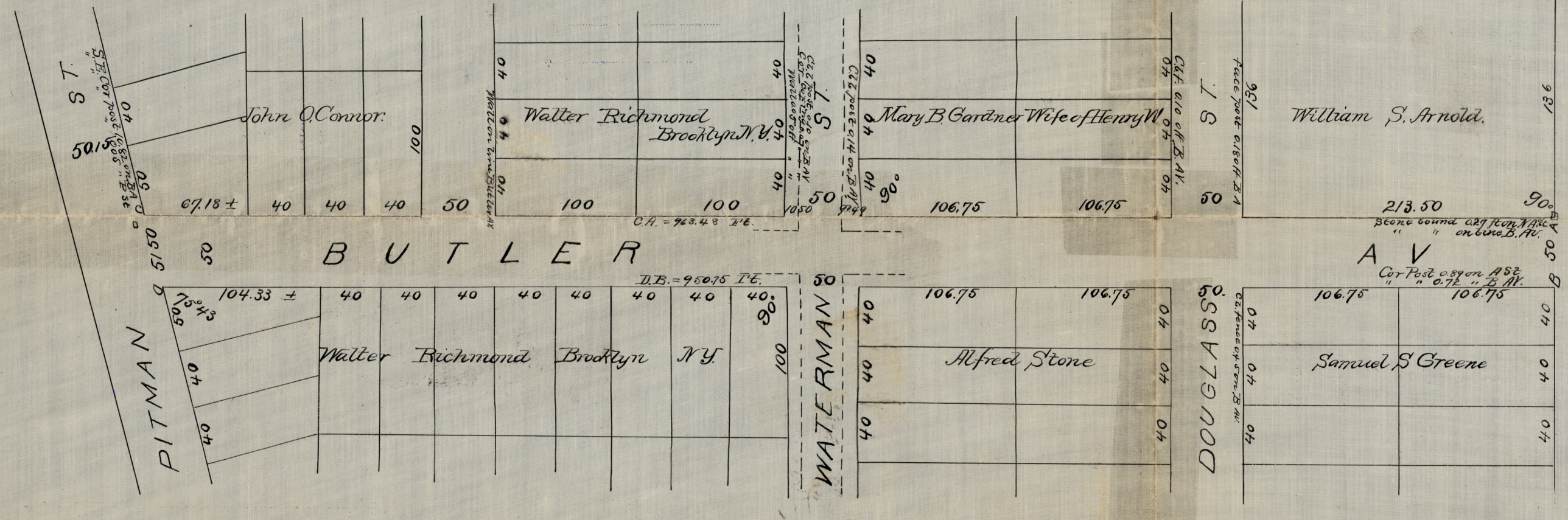


CITY ENGINEER'S OFFICE
STREET LINE DEPT.

CITY ENGINEER'S OFFICE
STREET LINE DEPT.

Sept. 9, 1873

01791



Received by the Board of Aldermen as a public highway
October 2, 1873, Witness, Samuel W. Brown City Clerk

MAP OF BUTLER AV.

FROM PITMAN ST TO SOUTH ANGELL ST.

Made for the Hon BOARD OF ALDERMEN by CE. Paine City Engineer.

NOTE. For further reference to lines of Butler Ave
see Cold Spring Plat recorded in Plat Book
4 page 51 City Records.

Scale 80 Ft per inch.

SEP 9 1873

OFFICE No. 1490
DRAWER " 81
SHEET " F-12

St. plat book 5 page 8

Compared