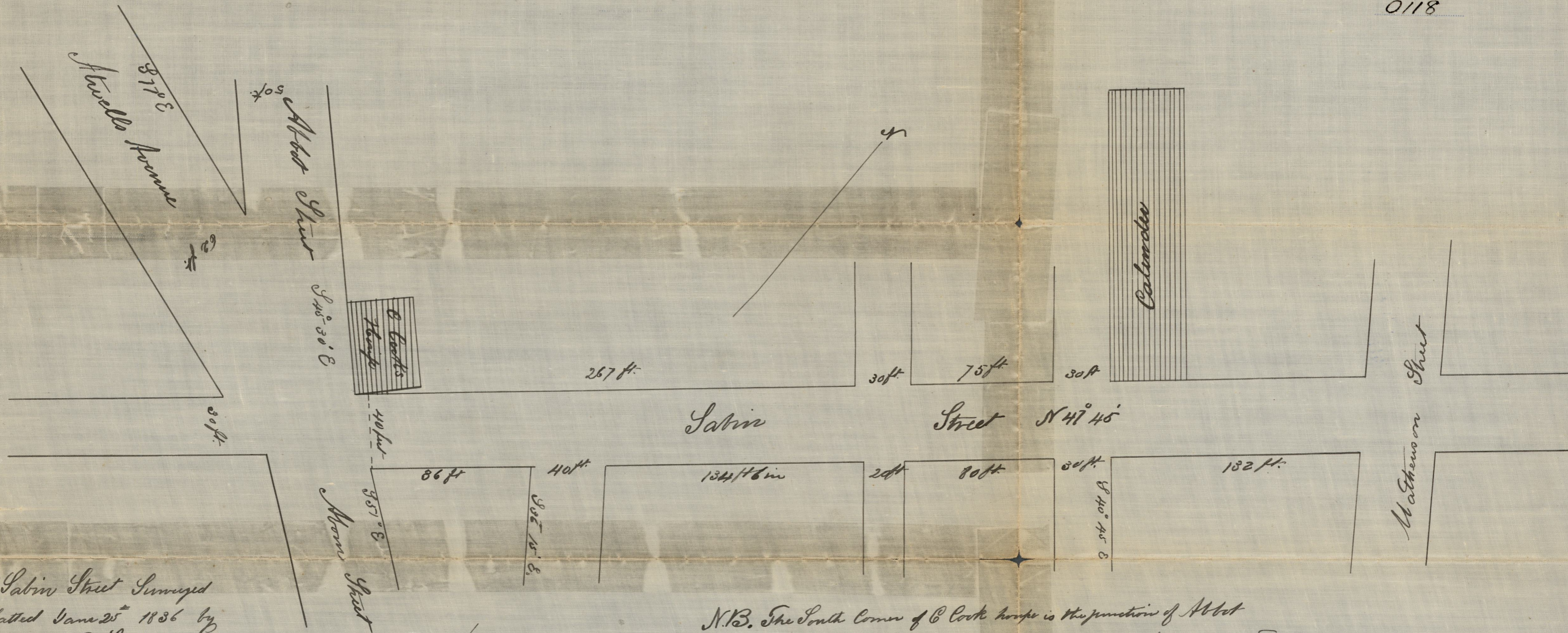


June 25, 1836

0118



Plat of Sabin Street Surveyed
and platted June 25th 1836 by
B Lockwood

Scale 50 feet to an inch
S.T.B. 1.P. 369.

N.B. The South Corner of C Cooks is the junction of Abbot
and Sabin Street, and the front of the Calender is the Mathewson
line of Sabin Street.

OFFICE No. 113
DRAWN BY 81
SHEET E-6

OFFICE No. 113
DRAWER ,, 81
SHEET ,, E-6

Compared