

July 22, 1910

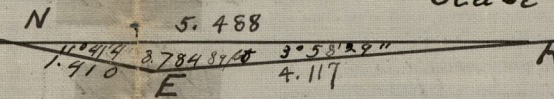
MAP of a portion of SOUTH WATER ST,

As Relaid and Widened June 19, 1867

BY GEO. T. SPICER, ALBERT G. SPRAGUE, AND CHAS. E. PAINE

A Committee appointed by the Board of Aldermen April 29, 1867

Enlarged Plan of Widening ^{0373 1/4} R.N.E.
Scale 2 Feet per inch



This Map accompanies our Report
of this date Prov June 19, 1867

George T. Spicer
Albert G. Sprague
Charles E. Paine

Scale 50 ft per inch

Surveyed and drawn June 1867

ST. P. B. 4 P 52 Report adopted July 22, 1867. See Street Book No 2 page 378 &c

BY C. E. PAINE:

ST. P. B. 4 P 52

Witness of
Samuel W. Brown City Clerk



172 10 St.

H A R B O R

Compared
by Ed + Dao

OFFICE No. 659
DRAWER 31
SHEET E-3