

This is a true copy of the plat accompanying our Report to be made to the Supreme Court in the matter of the laying out & straightening of Point Street.

Commissioners

William H. Bowen
Samuel B. Durfee
Robert Manchester
Wm. D. Pierce
Henry J. Spooner

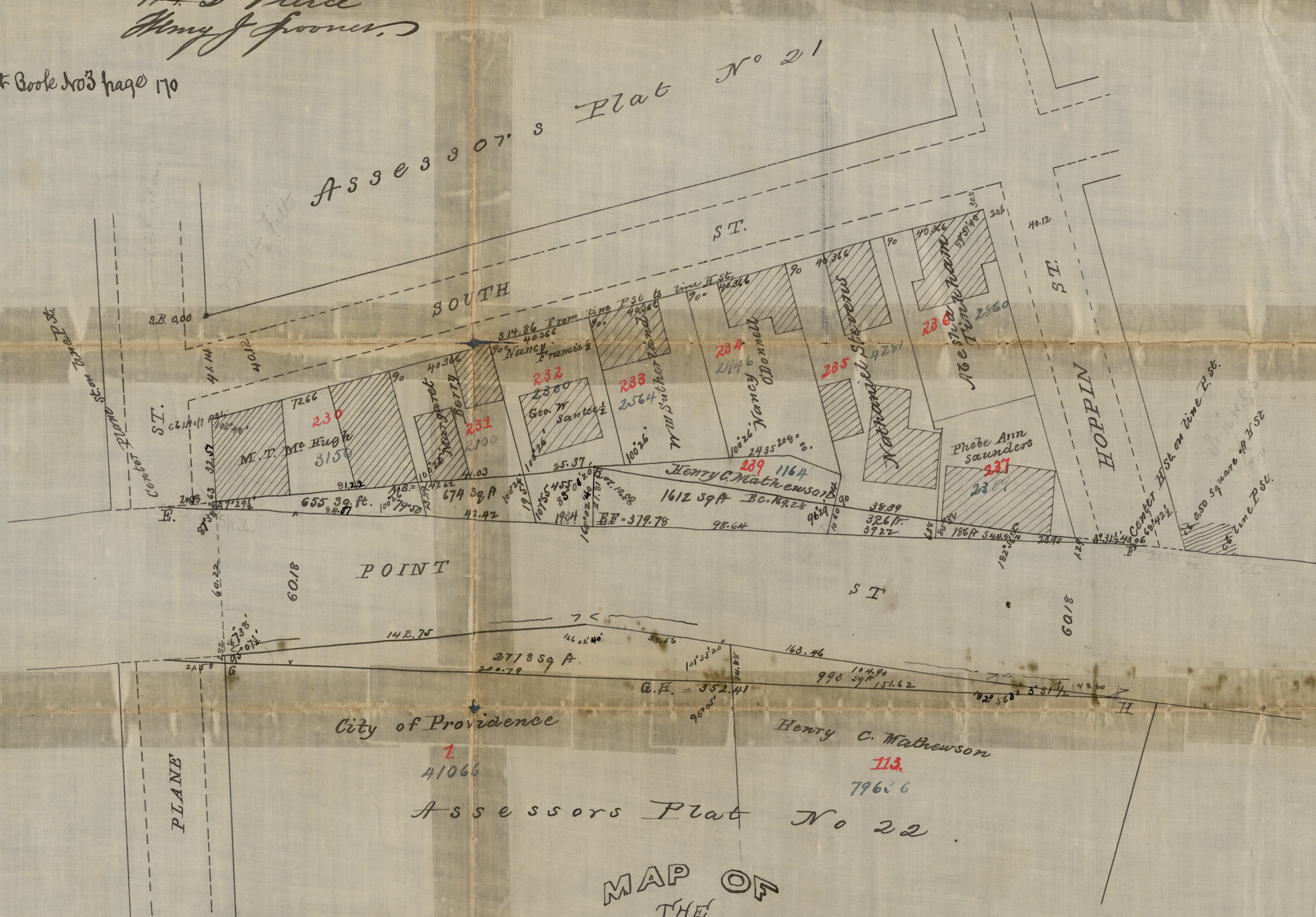
CITY ENGINEER'S OFFICE

STREET LINE DEPT.

Apr. 13, 1874

02229

For Report see Street Book No 3 page 170



MAP OF THE PROPOSED STRAIGHTENING OF

POINT ST

From PLANE & HOPPIN ST.

Made by order of
William H. Bowen
Samuel B. Durfee
Robert Manchester
William D. Pierce
Henry J. Spooner

Commissioners appointed by the Hon. Supreme Court Oct. term 1873.

by C. E. FAINE (1874)

Scale 40 ft. per inch

The numbers of lots in red and the areas in blue are from Assessors Plats.

OFFICE No. 1798
DRAWER 81
SHEET E-27

CITY ENGINEER'S OFFICE

77-59-6
68-42-3
11-17-3