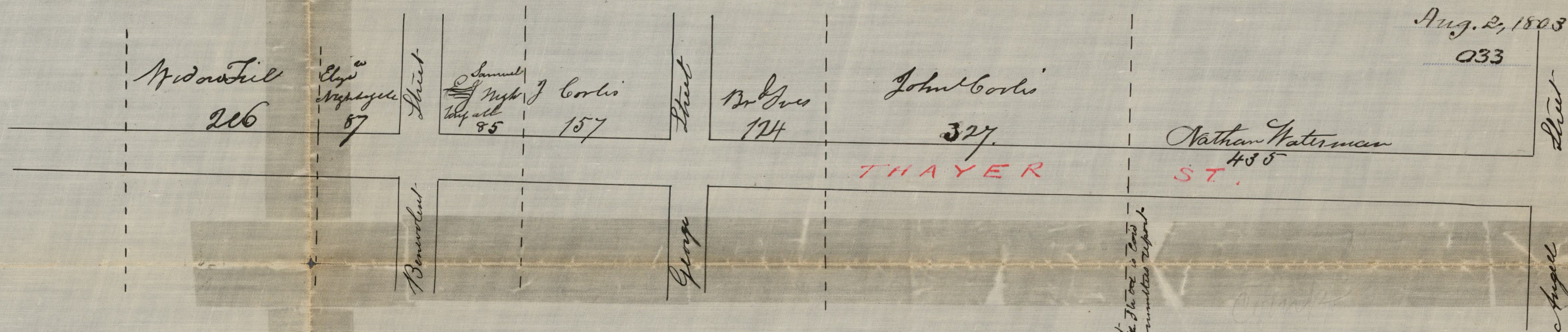


CITY ENGINEERS' OFFICE.  
STREET LINE DEPT.

Aug. 2, 1803

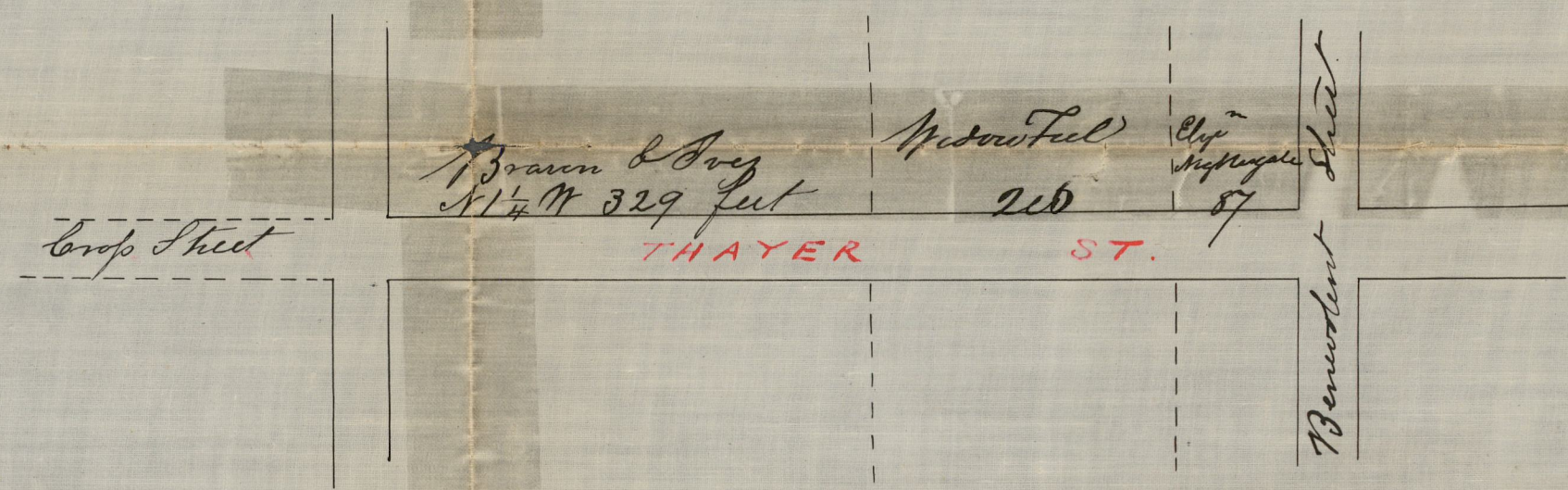
033



Surveyed & plotted  
 by 10<sup>th</sup> Dan C. Anthony  
 20 8 mo 1803  
 scale 120 feet to an Inch  
 C.R. 8 P 339.

Line of path from West  
 end of road to back of the lot is  
 as shown by the surveying  
 & Committee report.

INDEX  
 DRAWING  
 OF THE CITY



OFFICE No. 32  
 DRAWER ,, 81  
 SHEET ,, E-22

Completed.