

June, 1876

03393

PLAT OF WAYLAND AVENUE

From Irving Ave. to Humboldt Ave.

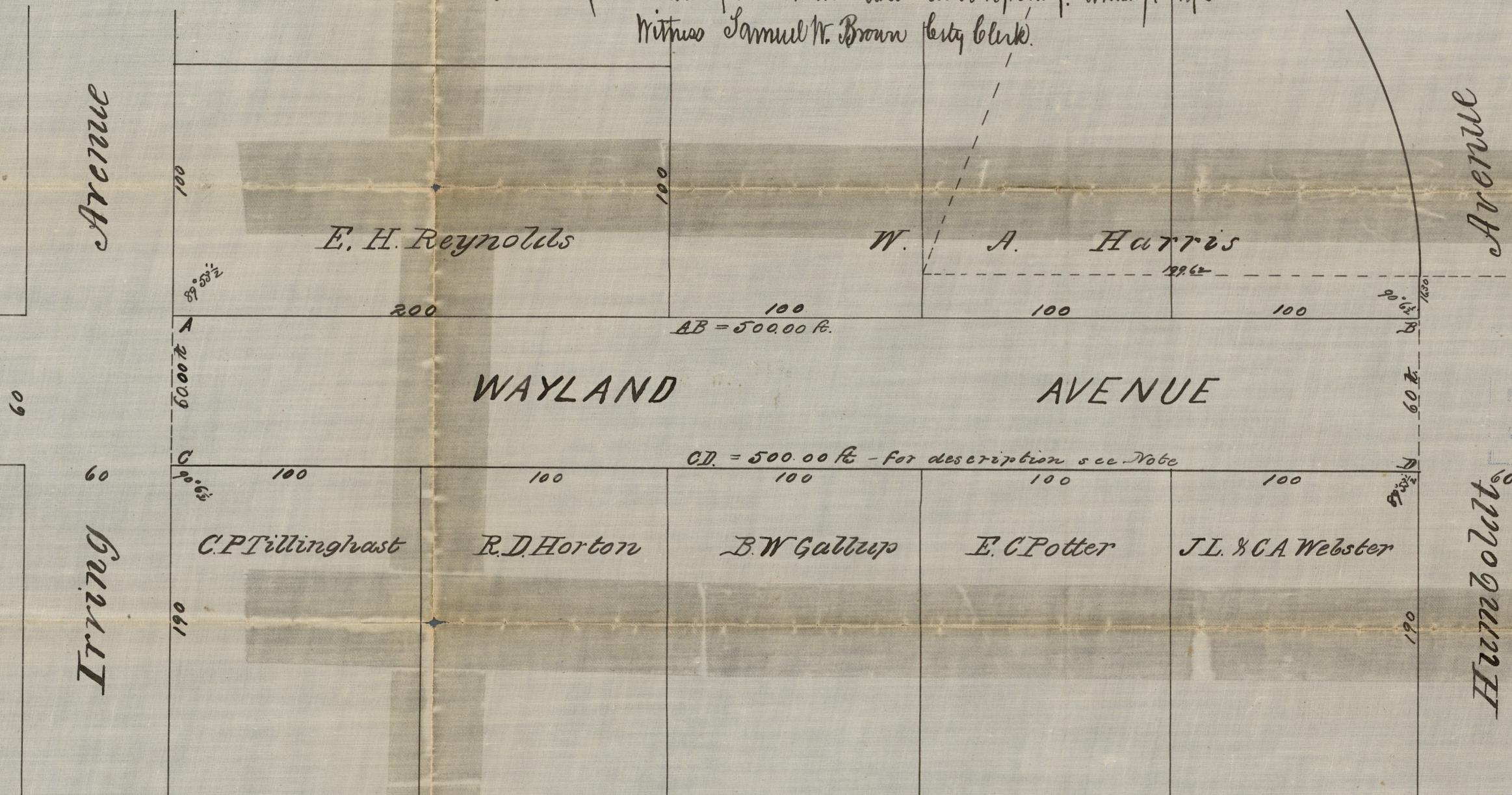
City Engineers Office

Jan 1876.

Scale 50 ft. per inch.
St. p. 6. 5 p 50.

Note The line *CD* is 5 ft westerly from, and parallel with, a line running from a Stone Bound about 80 ft. north of north line of Angell St. to a Stone Bound in the northerly line of President Avenue.

Approved by the Board of Aldermen as a Public Highway, January 1, 1876
Witness Samuel W. Brown City Clerk.



OFFICE No.	2791
DRAWER	81
SHEET	E-19

Compared