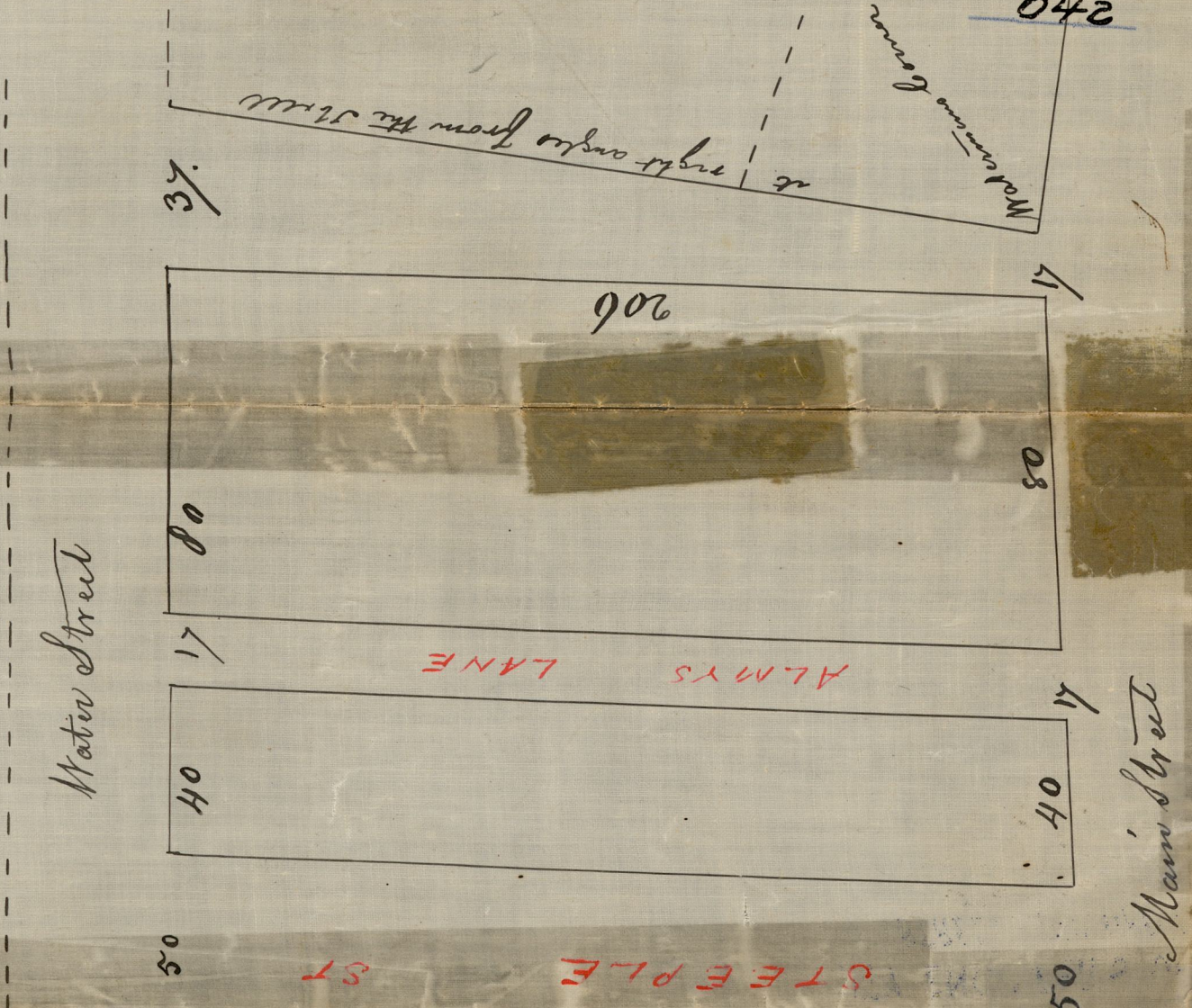


A Plat of a Street in two parts laid out in Providence one of them beginning in the line of Westminster Street and at the Southeastly corner of Edward Harris House and from thence a straight line to the Northeastly corner of house standing on the line of Washington Street and line bounded the Wately side of said Street it extends from said Westminster Street 196 feet holding the width of 30 feet; from thence to Washington Street 208 feet holding the width of thirty six feet and the other 140 feet wide and low from Washington to Sabini Street the Easternly line of which is twenty six feet from the end of the last mentioned line at Washington Street to the corner formed by the junction of Sabini and Abbott Street is



Surveyed on Plat of
 H. Danl. Anthony
 11 of 7 222 1814
 Took an 10 feet to an inch
 comic Record 9.B. page 70

July 12, 1817
 Pth Danl Anthony
 Scale 40 feet to an Inch
 comic Record 9.B. page
 Compared 572



CITY ENGINEER'S OFFICE
 STREET LINE DEPT.
 July 11, 1814
 Dec. 27, 1817
 042

OFFICE No. 41
 DRAWER 81
 SHEET E-10