

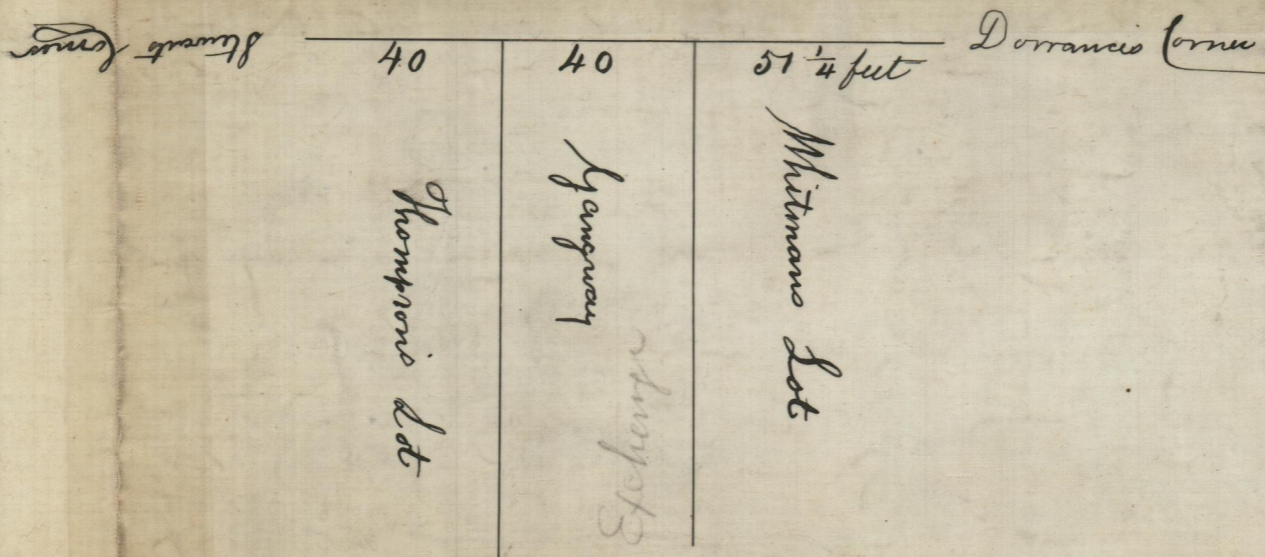
Apr. 19, 1796

July 8, 1812

" 27, 1818

012

Market Street *Wahine*



Surveyed and Platted by

Danl Anthony
S.T.P.B.S.P.R.R.

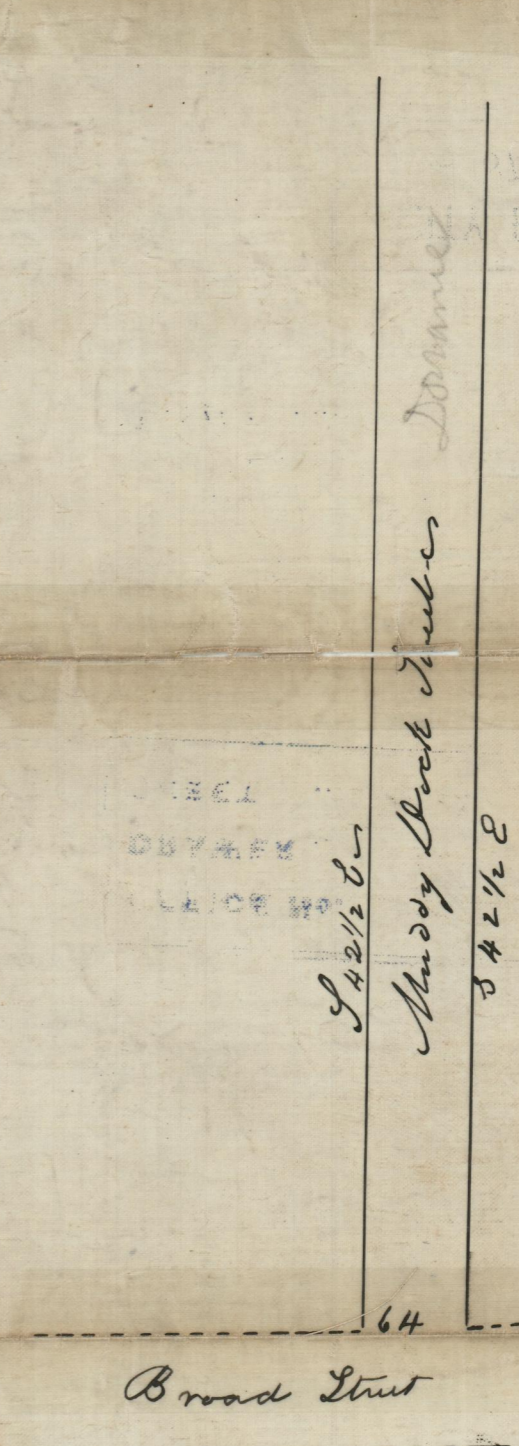
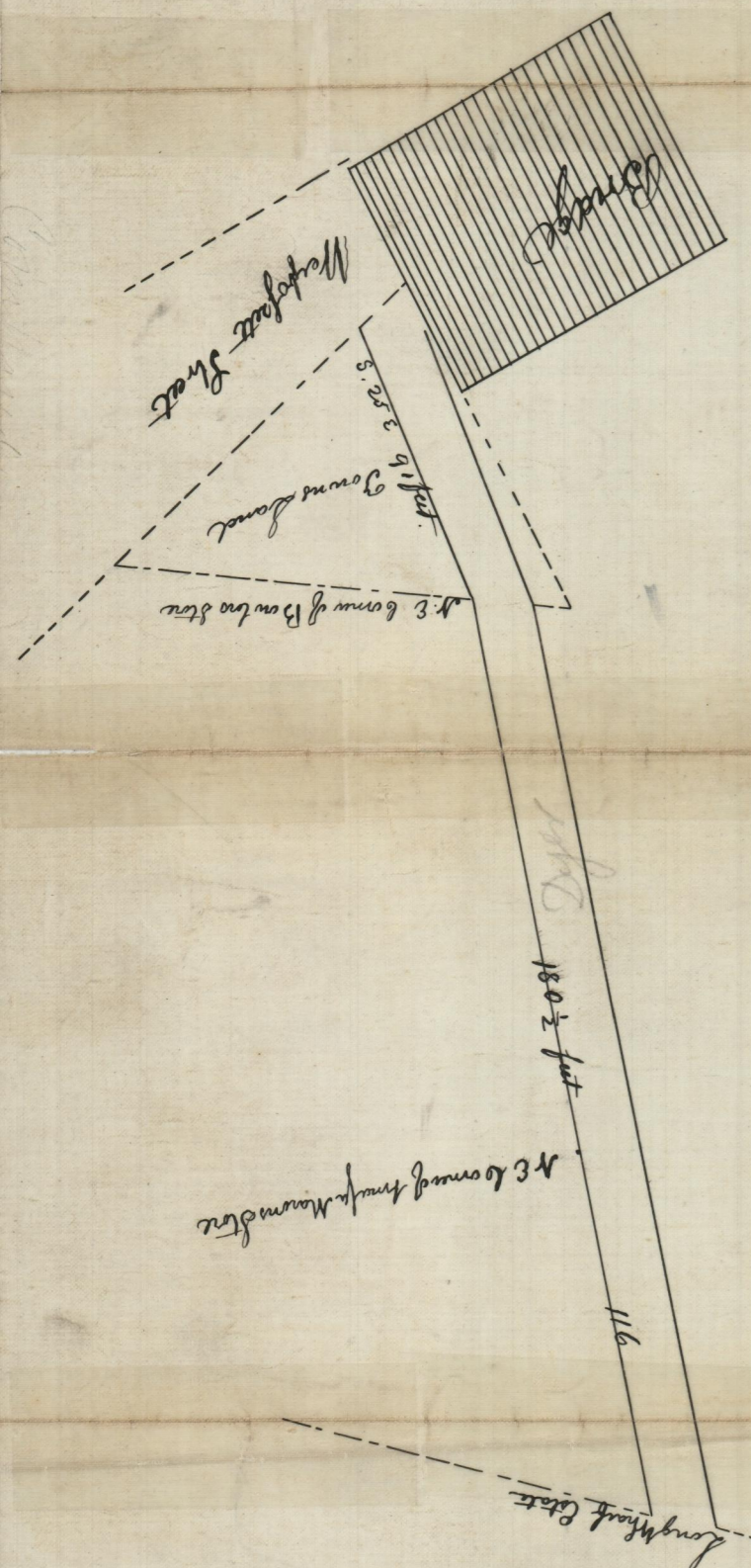
Providence 19th April 1796

According to directions of the Home Town Council We have run a front Line from the fo West corner of Stewate House to the S^o East corner of Dorrance House, and find the Distance by measurement One hundred Thirty One hundred thirty one $\frac{1}{4}$ feet of which We have set of Forty feet for Thompson's lot Forty feet for the Gangway turning the same at Right angles of Fifty one and $\frac{1}{2}$ feet for Whitman's Lot of which the enclosed is a Plat

John Smith
William Allen
Abner Deggitt

Commit Record 10 page 521

July 27, 1818
Scale 1/200



OFFICE No. 12
DRAWER ,, 81
SHEET ,, D-8

Muddy Dock Street is sixty four feet wide extending from Broad Street to the Channel of the River the fourth West side of said Street beginning at a point in the line of Broad Street fifteen inches Eastly from the corner of John and James Peck's House and from the same with a front nine feet and three inches Eastly from the North easterly corner of the meeting House standing on the fourthly side of Broad or Pine Street and it commeth the same range to said Channel Surveyed and plotted by *Danl Anthony* 8th Jan 1812
Commit Record 9 A page 426

Compared