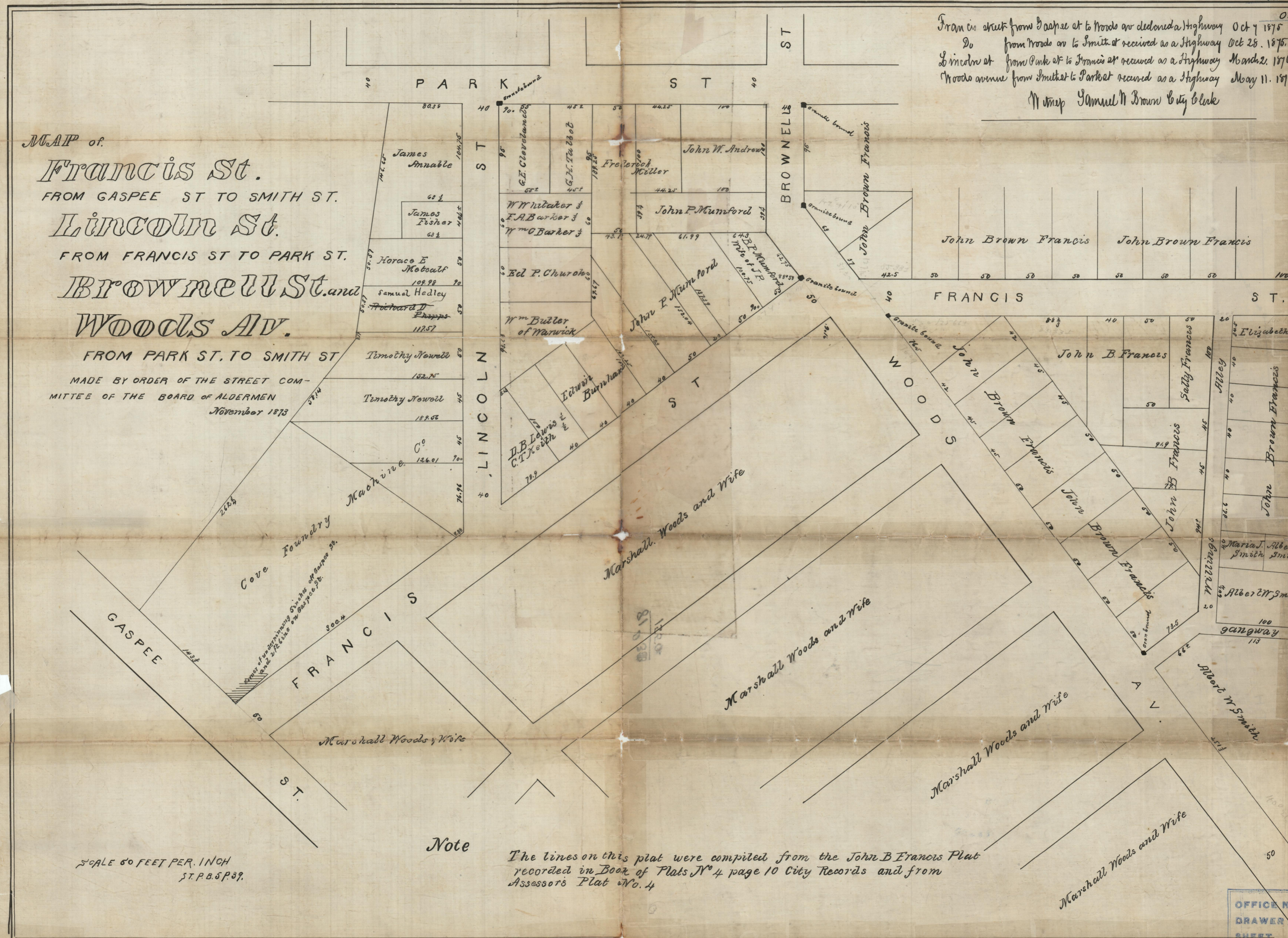


Francis street from Gaspee st to Woods av declared a highway Oct 7 1875  
Do from Woods av to Smith st received as a highway Oct 28. 1875  
Lincoln st from Park st to Francis st received as a highway March 2. 1876  
Woods avenue from Smith st to Park st received as a highway May 11. 1876  
Attest Samuel M Brown City Clerk

MAP of  
**Francis St.**  
FROM GASPEE ST TO SMITH ST.  
**Lincoln St.**  
FROM FRANCIS ST TO PARK ST.  
**Brownell St. and**  
**Woods Av.**  
FROM PARK ST. TO SMITH ST  
MADE BY ORDER OF THE STREET COM-  
MITTEE OF THE BOARD OF ALDERMEN  
November 1873



Note  
The lines on this plat were compiled from the John B Francis Plat  
recorded in Book of Plats No 4 page 10 City Records and from  
Assessor's Plat No. 4

SCALE 60 FEET PER. INCH  
S.T.P.B. 5 P. 29.

OFFICE No  
DRAWER  
SHEET

Francis street from Gaspee st to Woods av declared a Highway Oct 7 1875  
 Do from Woods av to Smith st received as a Highway Oct 28. 1875  
 Lincoln st from Park st to Francis st received as a Highway March 2. 1876  
 Woods avenue from Smith st to Park st received as a Highway May 11. 1876

M. W. Brown City Clerk

MAP of

Francis St.

FROM GASPEE ST TO SMITH ST.

Lincoln St.

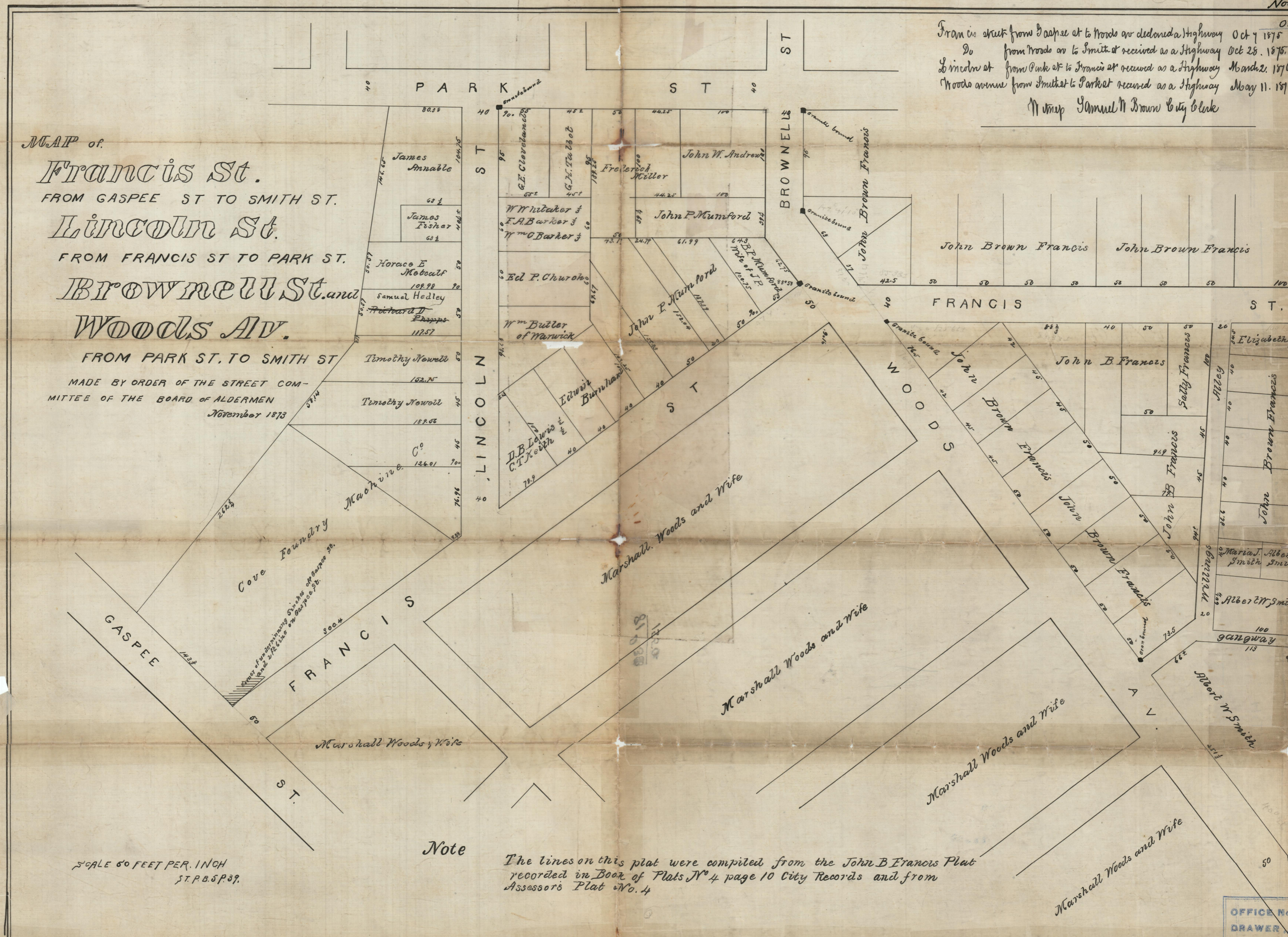
FROM FRANCIS ST TO PARK ST.

Brownell St. and

Woods Av.

FROM PARK ST. TO SMITH ST.

MADE BY ORDER OF THE STREET COMMITTEE OF THE BOARD OF ALDERMEN  
 November 1873



Note

The lines on this plat were compiled from the John B Francis Plat recorded in Book of Plats No 4 page 10 City Records and from Assessor's Plat No. 4

SCALE 60 FEET PER. INCH  
 S.T.P.B.S.P.39.

OFFICE NO.  
 DRAWER  
 SHEET

81  
 D-38