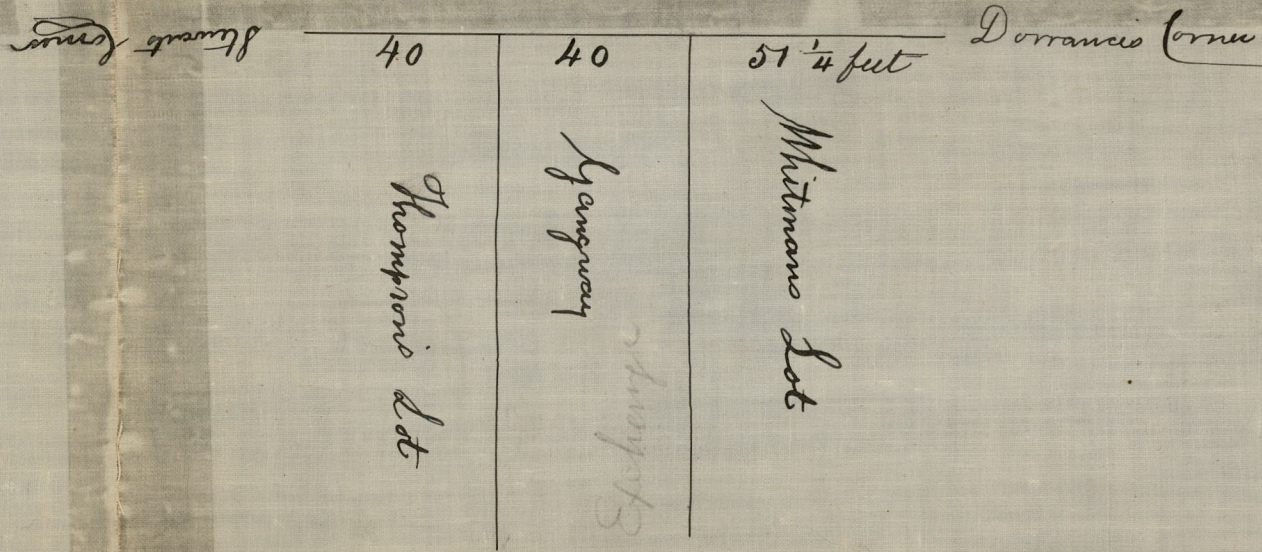


Apr. 19, 1796  
July 8, 1812  
" 27, 1818  
012

Market Street



Surveyed and Plotted by

Dan'l Anthony  
ST. P. B. S. P. R. R.

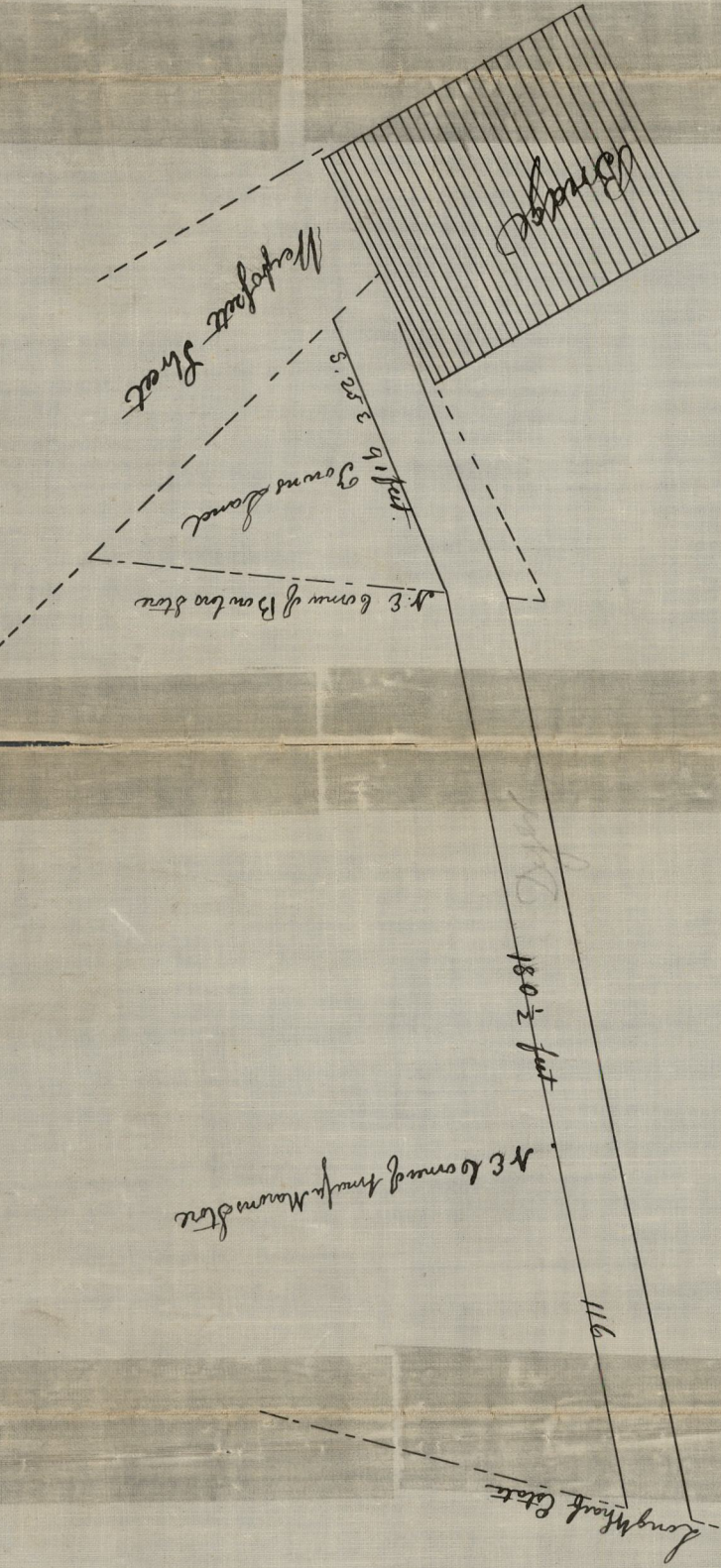
Providence 19<sup>th</sup> April 1796

According to directions of the Home Town Council We have run a front Line from the West Corner of Stevate House to the S<sup>o</sup> East Corner of Dorrance House, and find the Distance by measurement One hundred Thirty One hundred thirty one  $\frac{1}{4}$  feet of which We have set of Forty feet for Thompson's lot Forty feet for the Gangway turning the same at Right angles to Fifty one and  $\frac{1}{4}$  feet for Whitman's Lot of which the enclosed is a Plat

John Smith  
William Allen  
Abner Duggitt

Council Records 10 page 552

Scalteeo  
July 27, 1818



OFFICE No. 12  
DRAWER, 81  
SHEET " D-8

Muddy Dock Street is sixty four feet wide extending from Broad Street to the Channel of the River. The fourth West side of said street begins with a point in the line of Broad Street fifteen inches easterly from the corner of John and James Peck's House and from there it ranges with a point nine feet and three inches easterly from the North easterly corner of the meeting House standing on the southerly side of Broad a line street and it continues the same range to said Channel. Surveyed and plotted by Dan'l Anthony 8<sup>th</sup> June 1812  
Council Records 9A page 426

Compared