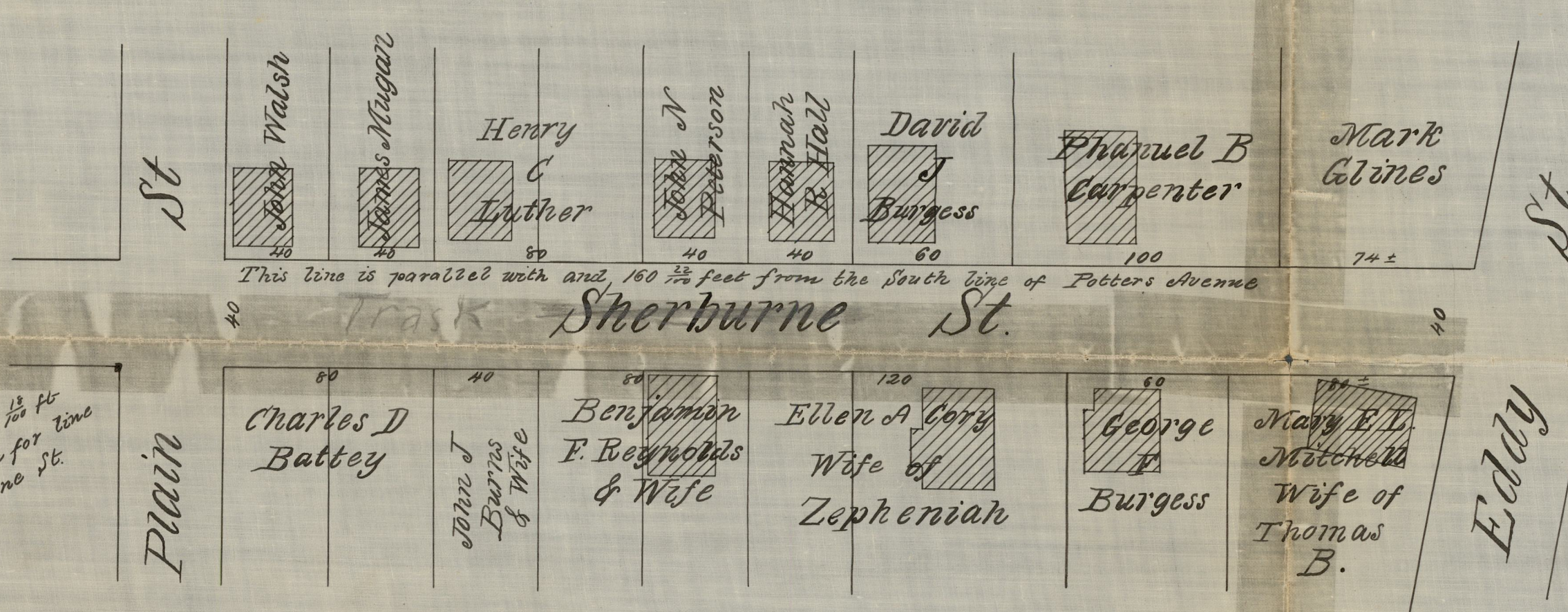


02451

# Map of SHERBURNE ST

FROM PLAIN TO EDDY STS  
Made by  
C. E. Paine City Engineer  
Oct 28, 1874.

Declared a Public Highway March 25, 1875  
Witness Samuel W. Brown City Clerk



Stone bound <sup>18</sup>/<sub>100</sub> ft  
to far South for line  
of Sherburne St.

Scale 50 feet per inch  
St. P. B. 5 P. 29

OFFICE No. 2007  
DRAWER ,, 81  
SHEET ,, D-7

This Street is more particularly described on a plat of  
the Dower land of the Estate in Cranston of the  
Joseph Burgess Estate surveyed by Atwater, Schubarth & Haines April 16, 1848

Compared