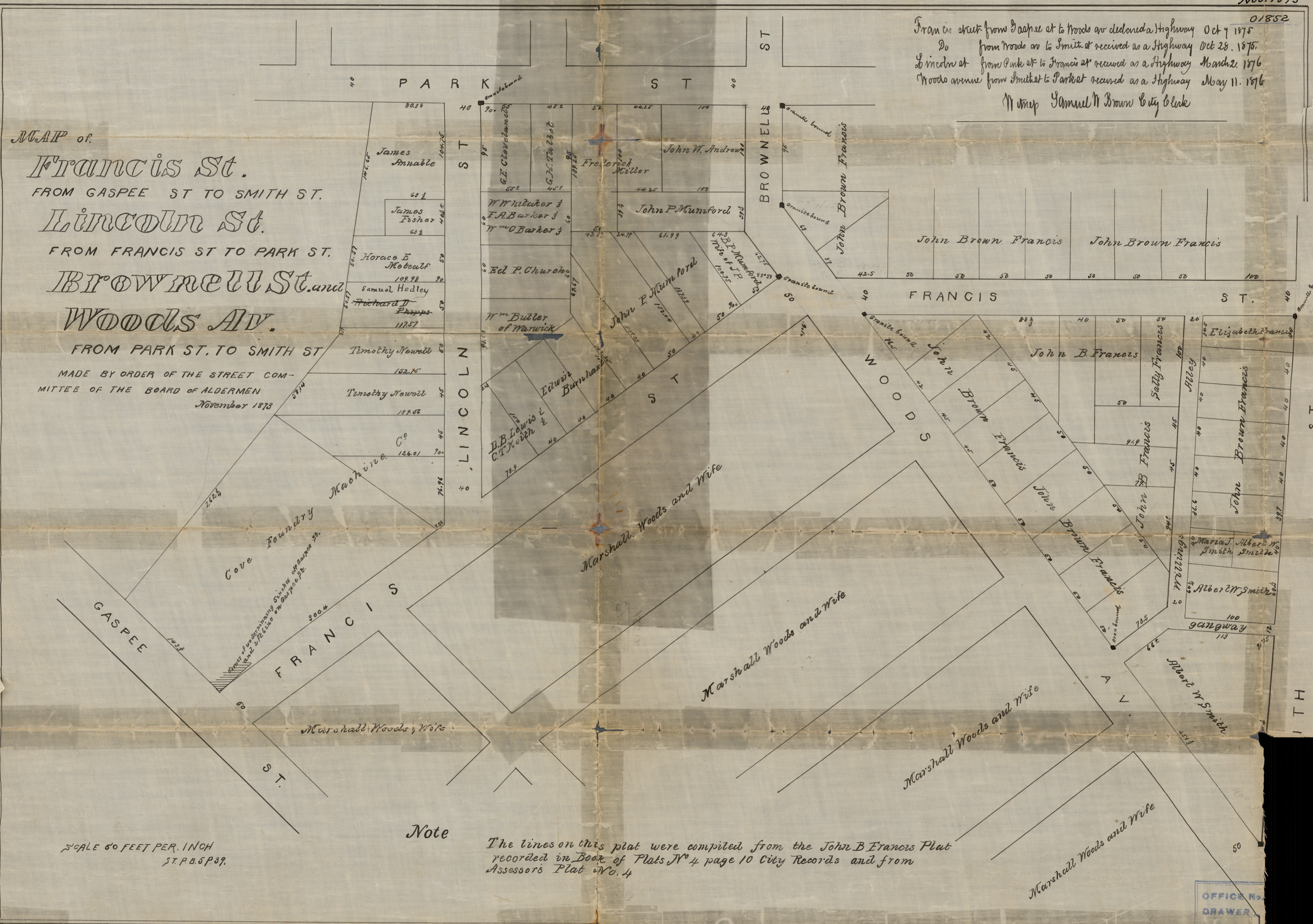


01852

Francis street from Gaspee st to Woods av declared a Highway Oct 7 1875
Do from Woods av to Smith st received as a Highway Oct 28. 1875.
Lincoln st from Park st to Francis st received as a Highway March 2. 1876
Woods avenue from Smith st to Park st received as a Highway May 11. 1876
Map Samuel W Brown City Clerk

MAP of
Francis St.
FROM GASPEE ST TO SMITH ST.
Lincoln St.
FROM FRANCIS ST TO PARK ST.
Brownell St. and
Woods Av.
FROM PARK ST. TO SMITH ST
MADE BY ORDER OF THE STREET COM-
MITTEE OF THE BOARD OF ALDERMEN
November 1873



Note
The lines on this plat were compiled from the John B Francis Plat recorded in Book of Plats No 4 page 10 City Records and from Assessor's Plat No. 4

SCALE 60 FEET PER. INCH
S.T.P.B.S.P.39.

OFFICE No.
DRAWER
SHEET

81
D-38