

Oct. 12, 1876

03505

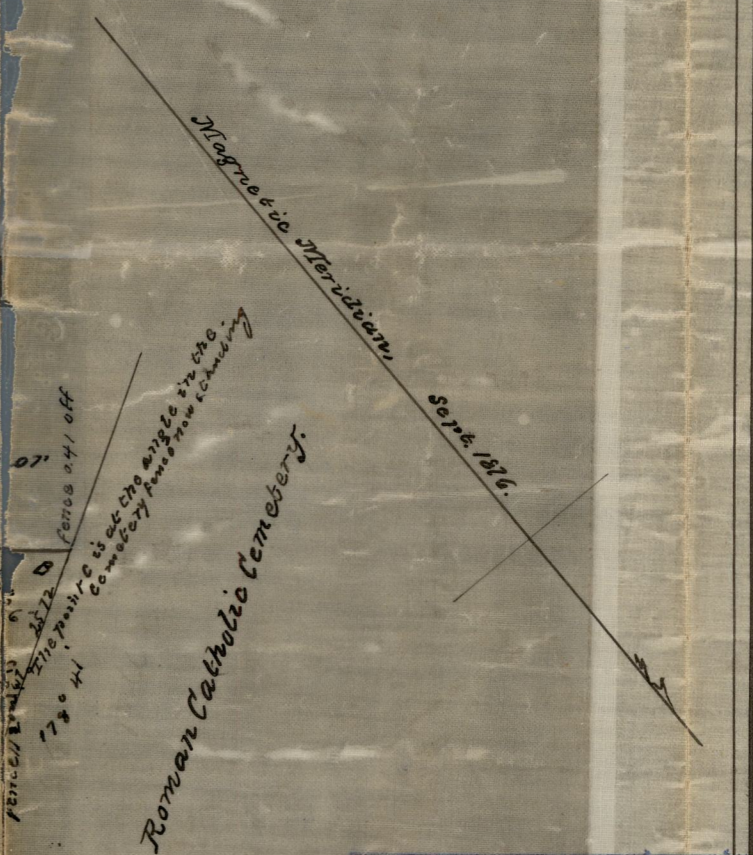
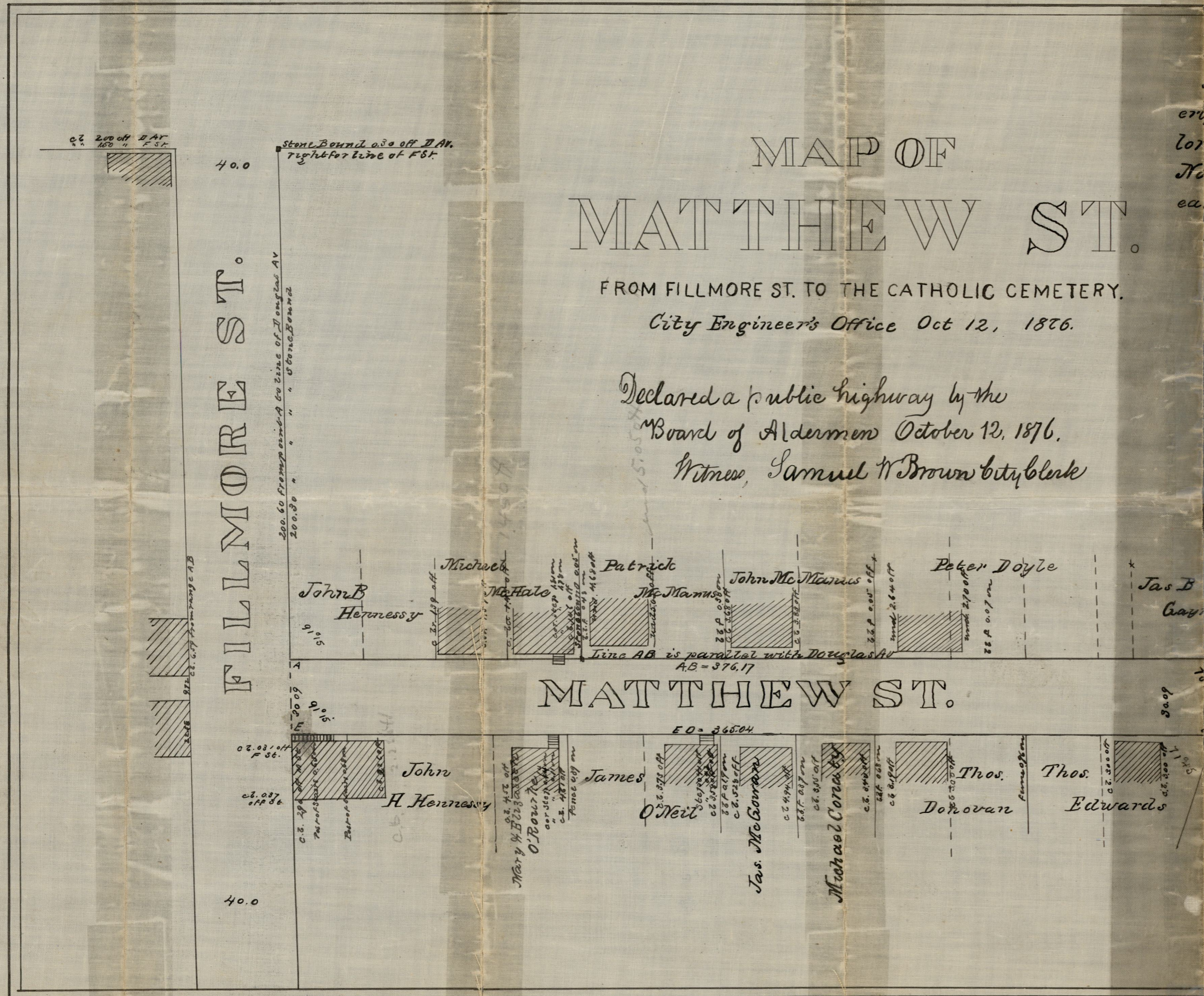
Matthew St. extends from the west
end line of Fillmore St. (formerly Tay-
lor St.) as established by the town of
North Providence June 5, 1872, to the
easterly line of the Catholic Cemetery.

MAP OF MATTHEW ST.

FROM FILLMORE ST. TO THE CATHOLIC CEMETERY.

City Engineer's Office Oct 12, 1876.

Declared a public highway by the
Board of Aldermen October 12, 1876.
Witness, Samuel W Brown City Clerk



OFFICE No. 2890
DRAWER .. 81
SHEET .. D-37

SCALE, 40 FEET TO AN INCH.
S.T.P.S.P.65

Compared