

Nov. 11, 1874

02485

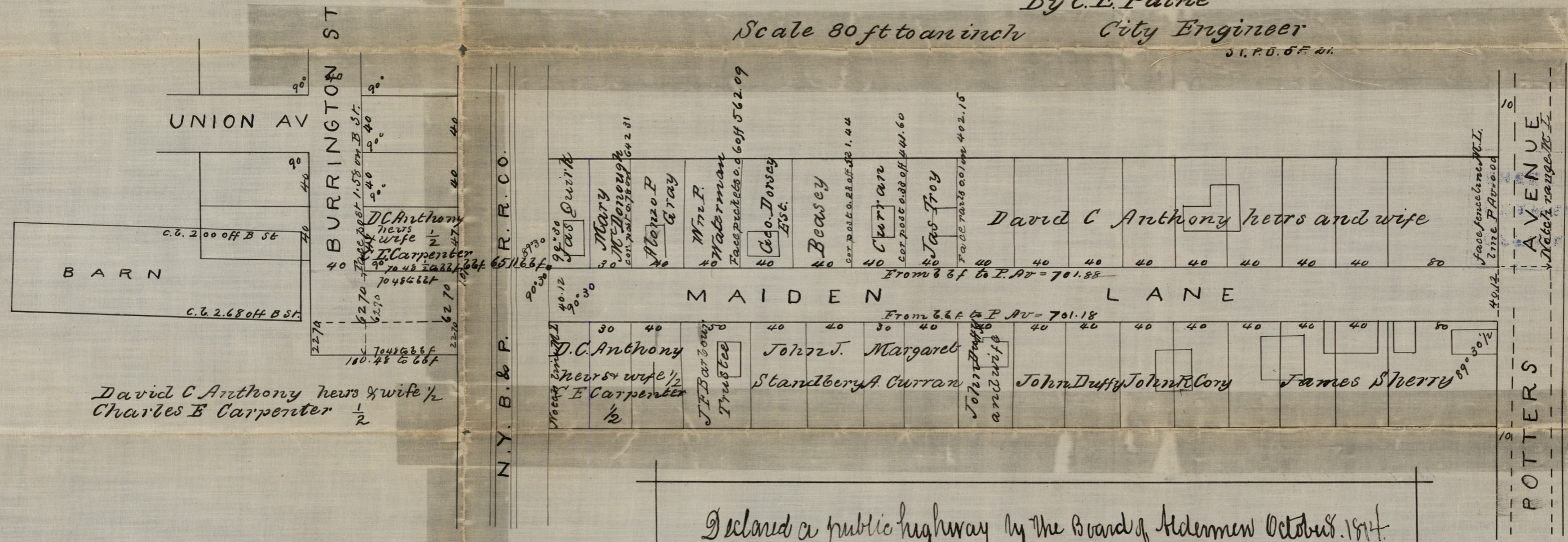
MAP OF MAIDEN LANE NOW CROCKER AVE. FROM POTTERS AV. TO BURRINGTON ST.

Made by order of the Board of Aldermen
Aug. 13, 1874
Surveyed and Drawn
Nov. 11, 1874

By C.E. Paine

Scale 80 ft to an inch City Engineer

S.P.O. 57 211



Declared a public highway by the Board of Aldermen October 1874.
Witness, Samuel W. Brown City Clerk

OFFICE No. 2039
DRAWER ,, 81
SHEET ,, 0-28

Compared