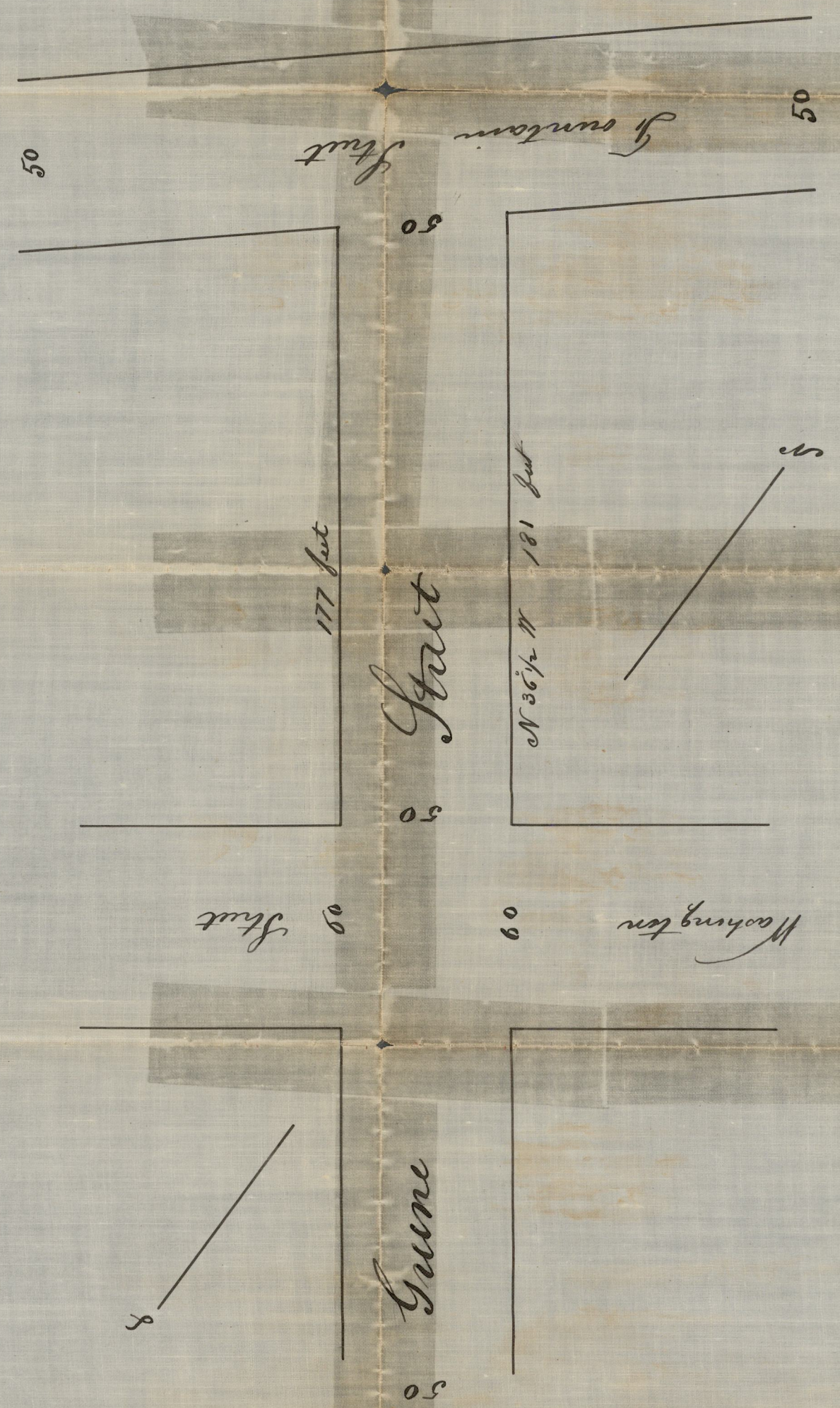


Oct. 3, 1886

CITY ENGINEER'S OFFICE,
STREET LINE DEPT.
Oct. 3, 1836
Nov. 9, 1838
0120



40 feet
Transit

Street

45 feet

Brook Street

$N 3 \frac{1}{4} E$ 342 feet

underpinning in
Angle $90^{\circ} 34'$
SUSPENDED
THE SURVEY OF DISTRICT
The Long Brook Street

INDEX
DRAWER
OFFICE NO.

Angle $89^{\circ} 26'$
underpinning is the line of Brook Street

50 feet

Wickenden Street

OFFICE No. 115
DRAWER " 81
SHEET " D-19

Compared

Surveyed and Platted Nov 9th 1838
by Benoni Lockwood
Scale 40/ft to an inch -
S.T.B. 12206

copy