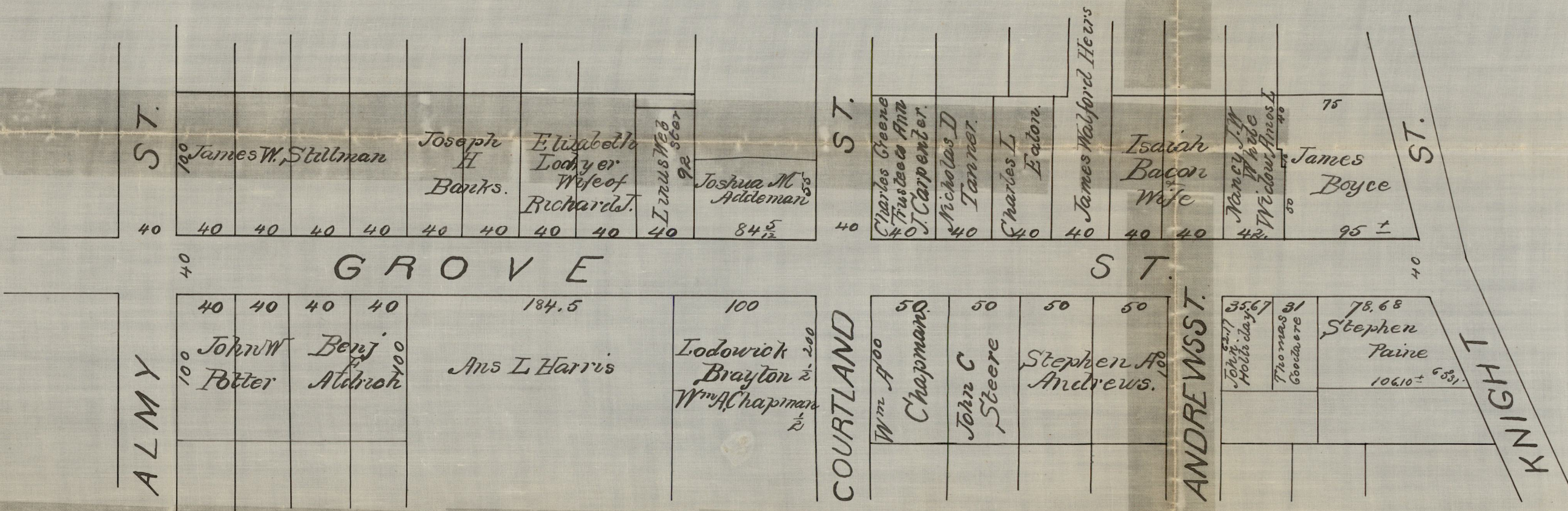


Aug. 1873

01760



PLAN of

GROVE ST

FROM KNIGHT TO ALMY ST.

Made by order of the Hon Board of Aldermen

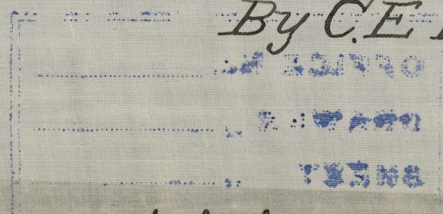
By C. E. Paine City Engineer.

Providence Aug. 1873.

For a more particular description of the line of
Grove St. see the W^m Almy Plat recorded in
P. B. 2. Page. 14 City Record.

Grove street from Knight st to Almy st declared a public highway August 21, 1873, by the Board of Aldermen.

Witness. Samuel W. Brown City Clerk



SCALE 80 FT. PER INCH
ST. P. 5 P. 6.

OFFICE No.	1463
DRAWER	81
SHEET	D-11