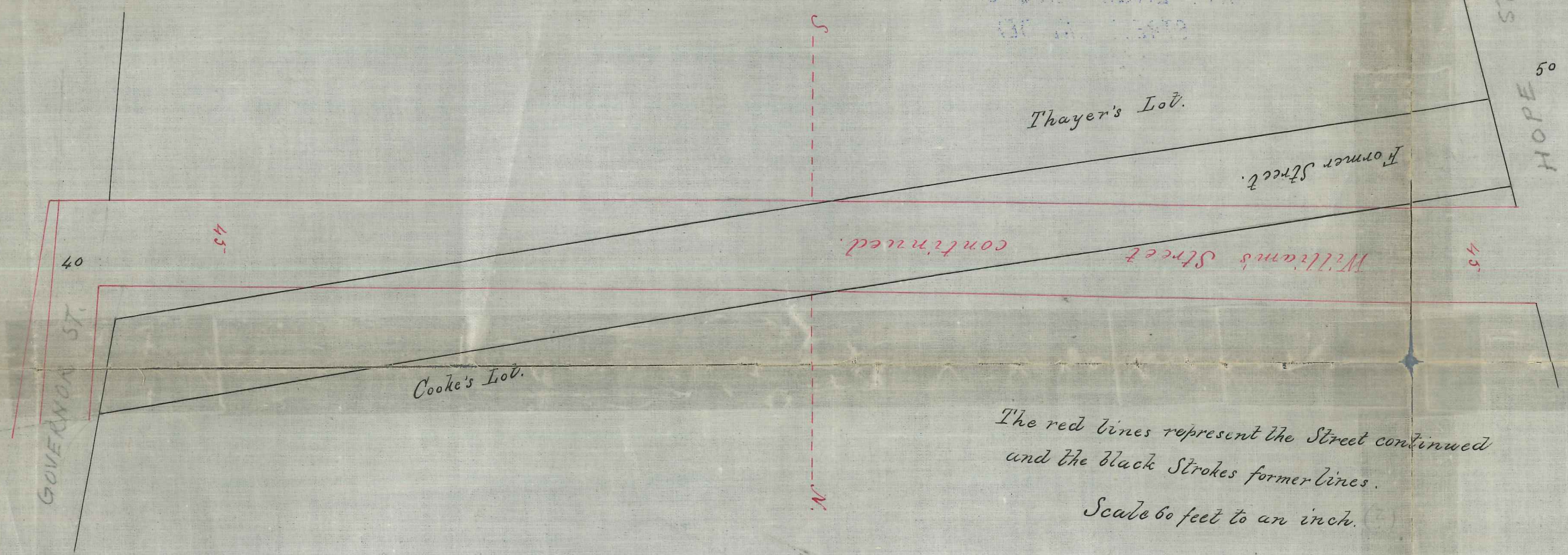


From S.B. 1 p. 52 1/2

CITY ENGINEER'S OFFICE
OF THE CITY OF NEW YORK

May 31, 1824.
CITY ENGINEER'S OFFICE.
STREET LINE DEP'T.
Apr 27, 1825
May 31, 1824
061



The red lines represent the Street continued
and the black Strokes former lines.
Scale 60 feet to an inch.

Williams Street.

P 93-
(N^o 10)

compared

81C-6



Olney's Lane
started April 27, 1825
one's Lockwood

Scale 100 ft. per inch.

60
81
C-6

compared