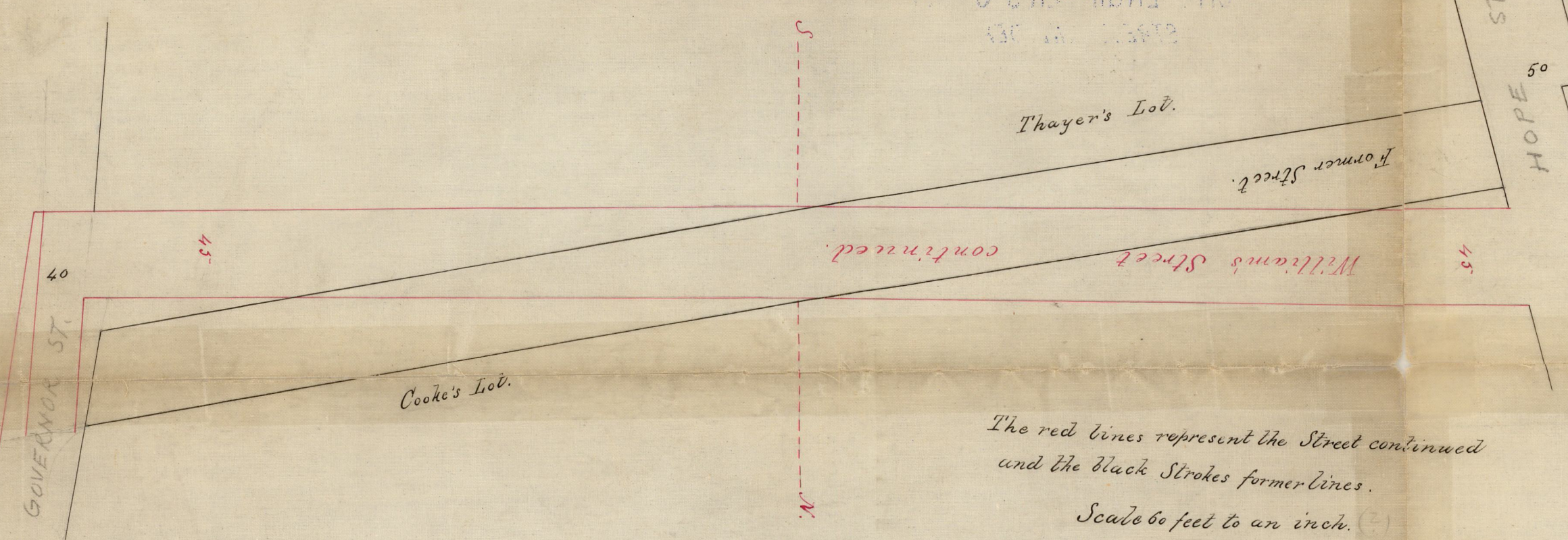


From St. B 1 p. 50 1/2

CITY ENGINEER'S OFFICE
STREET LINE DEPT.

May 31, 1824.
CITY ENGINEER'S OFFICE.
STREET LINE DEPT.
Apr 27, 1825
May 31, 1824
061



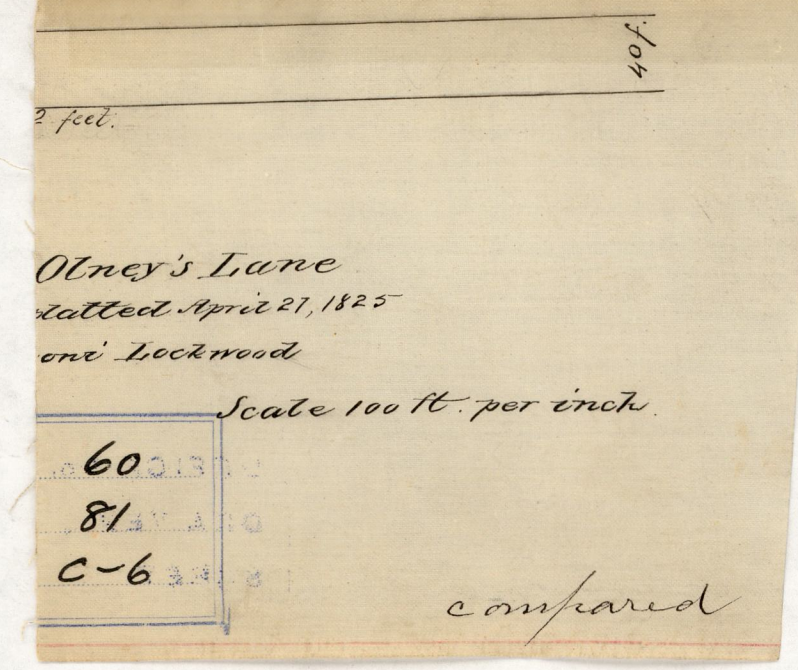
The red lines represent the Street continued
and the black strokes former lines.
Scale 60 feet to an inch.

compared

P 95-
V 10

81/2

81C-6



Otney's Lane
laid April 21, 1825
by Lockwood

Scale 100 ft. per inch.

60
81
C-6

compared