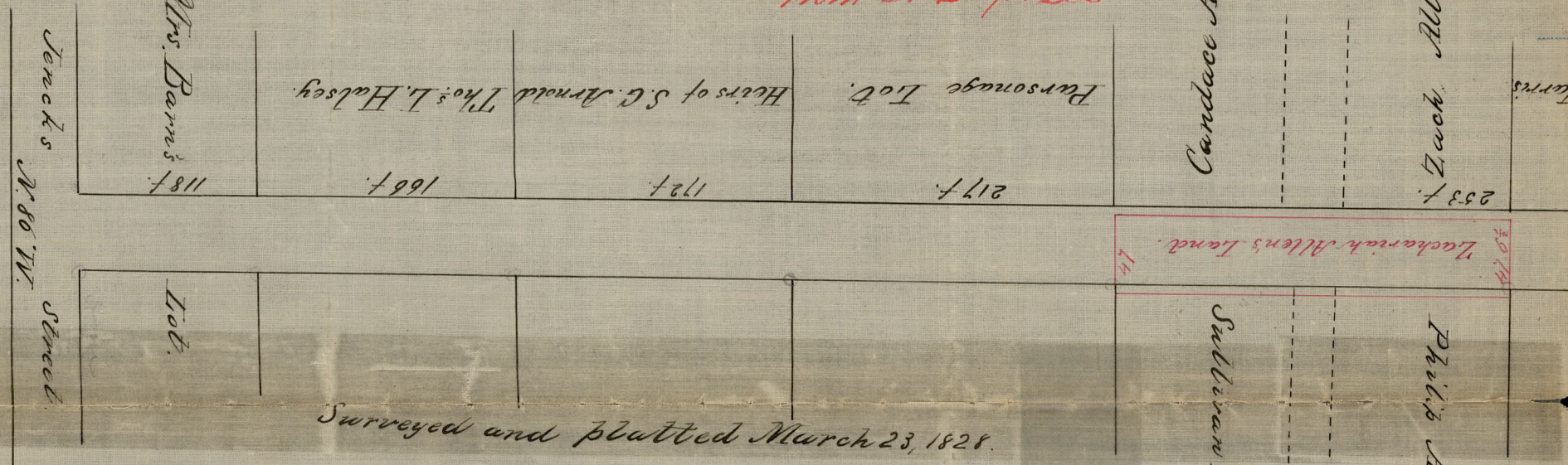


CITY ENGINEER
STREET
No
M

CONGDON ST.

From St-B 1 p. 226



Surveyed and platted March 23, 1828.

by Benoni Lockwood

Scale 100 feet to an inch.

EXCHANGE PLACE

From St-B 1 p. 272 1/2

S. E. corner of
the Washington
Insurance Office.

192 3 6 or 3330
the cap log at the
ce.

Hydravian Street.

ward's Corner.