

Dec. 16, 1875

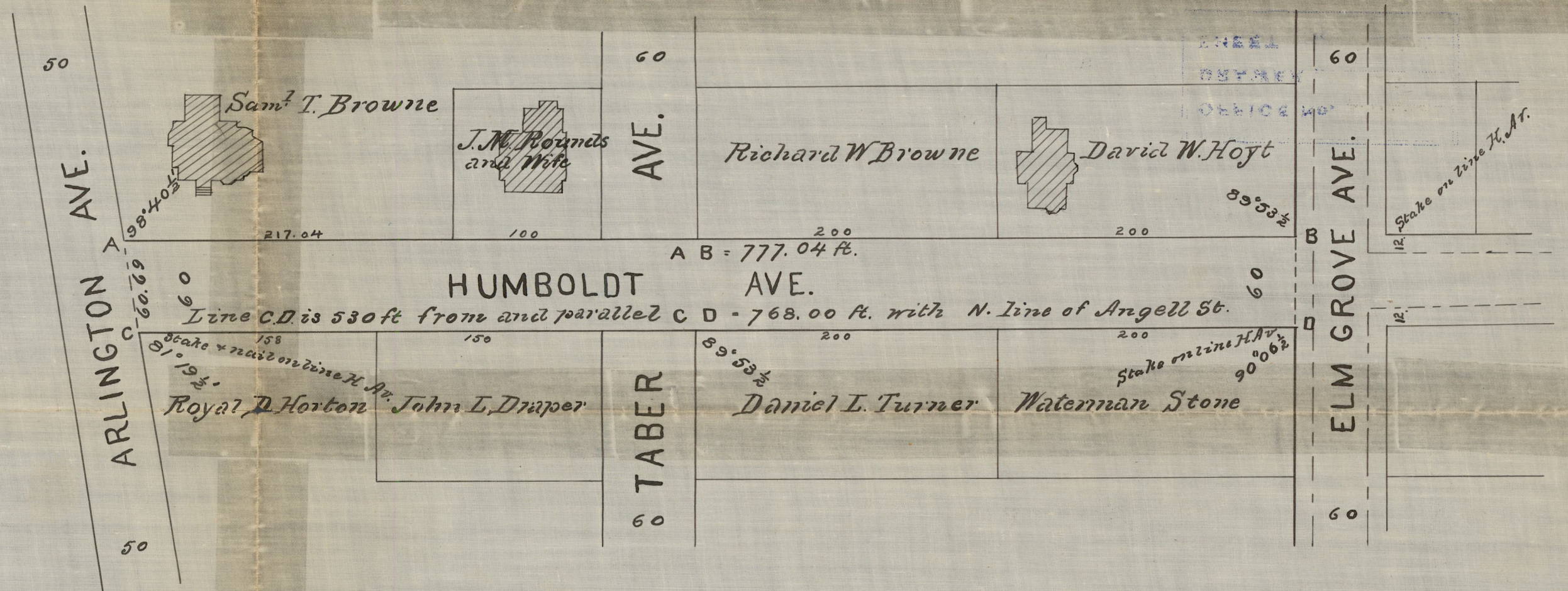
03084

Received by the Board of Aldermen
as a Highway December 23 1875.
Witness Samuel W Brown City Clerk

PLAN OF HUMBOLDT AVE.

From ARLINGTON AVE. to ELM GROVE AVE.

Made by order of the
HON. BOARD OF ALDERMEN
By C. E. Paine City Engineer
Dec. 16, 1875.



Scale 80 ft. per inch
S.T.P.B.S.P. 48,

OFFICE No. 2546
DRAWER ,, 81
SHEET ,, C-34

Compared