

Dec. 1876

03553

Map of MYRTLE STREET

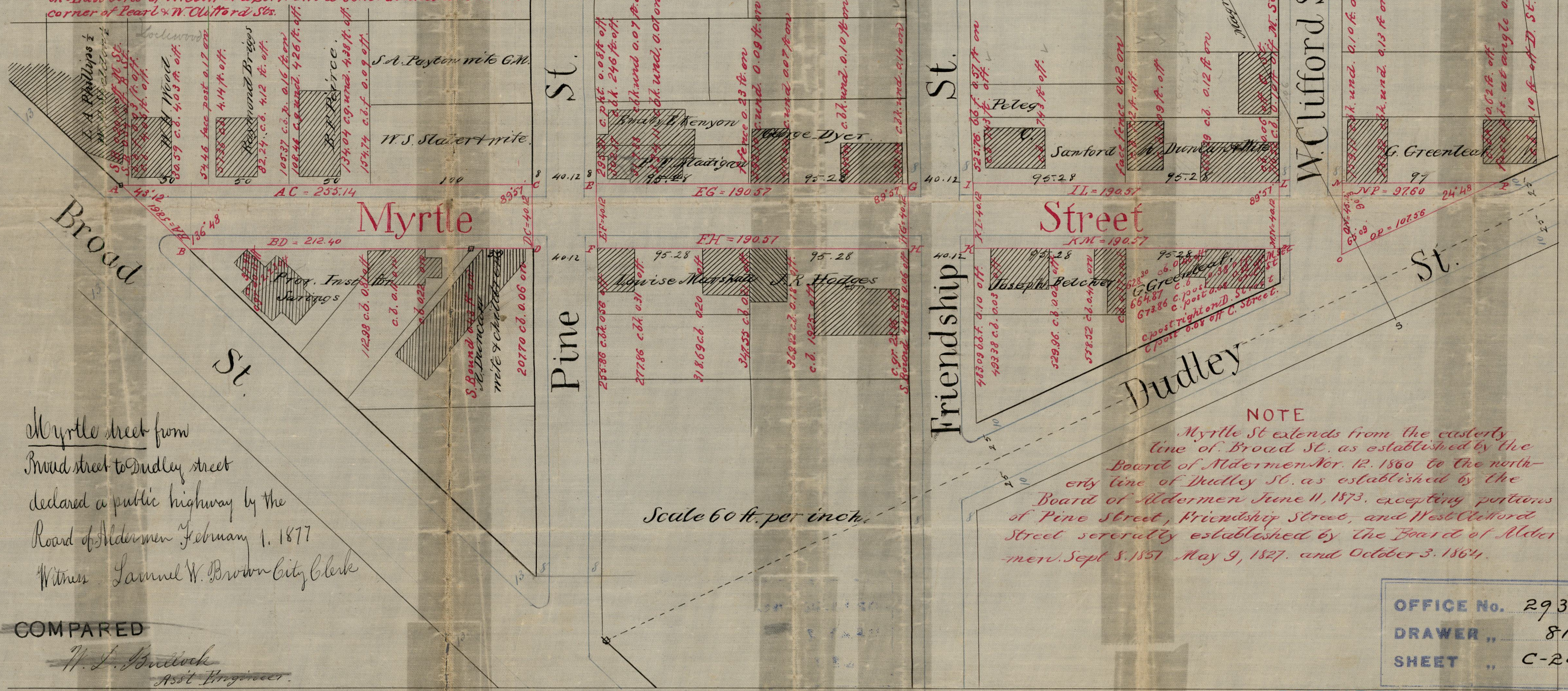
FROM BROAD ST. TO DUDLEY ST.

City Engineers Office

DECEMBER 1876

ST. PLAT BOOK 6 PAGE 13

NOTE
Myrtle St. is parallel with, and 922.76 ft. from the south line of Pearl St. The line of Pearl St. is defined by a stone bound at the SW. corner of Hayward and Pearl Sts. and a point on West Clifford St. 200.60 ft. measured on the East line of W. Clifford St. from a stone bound at the S.E. corner of Pearl & W. Clifford Sts.



Myrtle street from Broad street to Dudley street declared a public highway by the Board of Aldermen February 1. 1877
Witness Samuel W. Brown City Clerk

Scale 60 ft. per inch.

NOTE
Myrtle St. extends from the easterly line of Broad St. as established by the Board of Aldermen Nov. 12. 1860 to the northerly line of Dudley St. as established by the Board of Aldermen June 11, 1873, excepting portions of Pine Street, Friendship Street, and West Clifford Street severally established by the Board of Aldermen Sept. 8, 1857, May 9, 1827, and October 3, 1864.

COMPARED
W. L. Bullock
Asst. Engineer.

OFFICE No. 2932
DRAWER ,, 81
SHEET ,, C-24

COMPARED.
Comp.
Asst. Engineer.

255.14
212.40
42.74