

Feb. 1, 1865

0634

WEEDEN ST.

PLAT of
Weeden St.

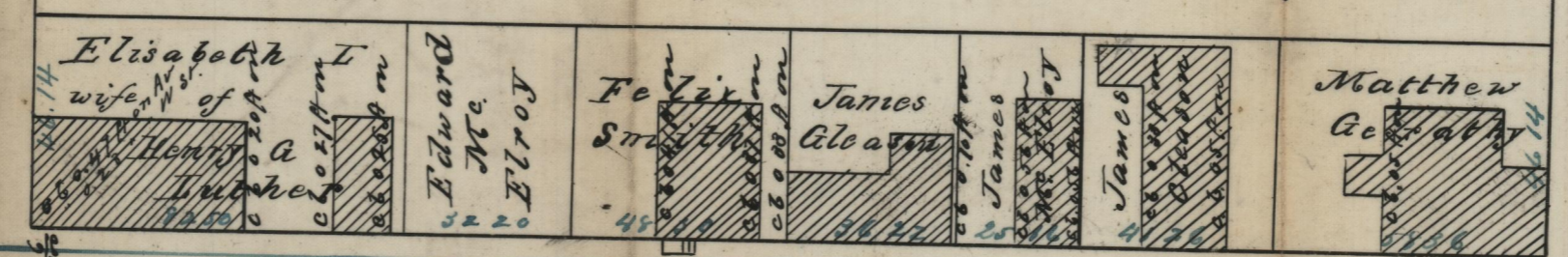
Made for Proprietors. Feb. 1, 1865.

By C. E. PAINE.

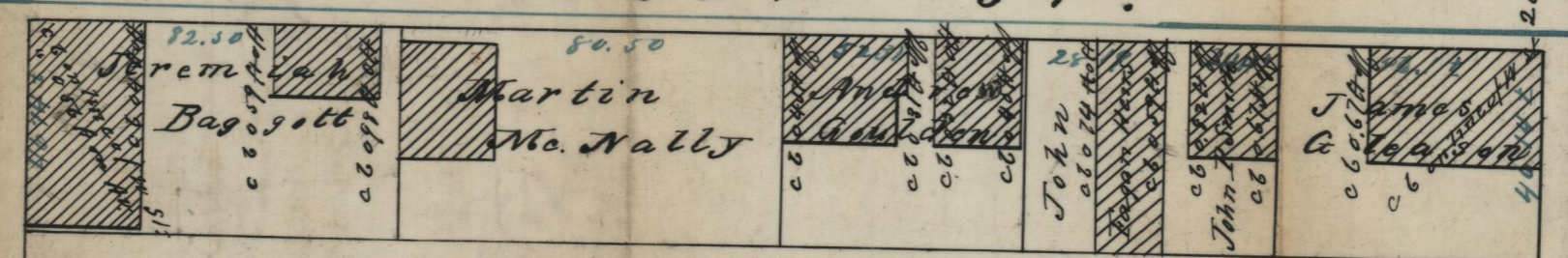
Avenue.

Atwells

Federal Street.



WEEDEN ST.



Scale 40 Feet to an inch
Distances in Blue Ink taken from
Assessors Plat N: 28.

Declared a Public Highway January 13, 1865.

See Shut Book No 2 page 323

Samuel W. Brown City Clerk

SE 22 47 46

OFFICE No.	614
DRAWER	81
SHEET	B-30

Compared