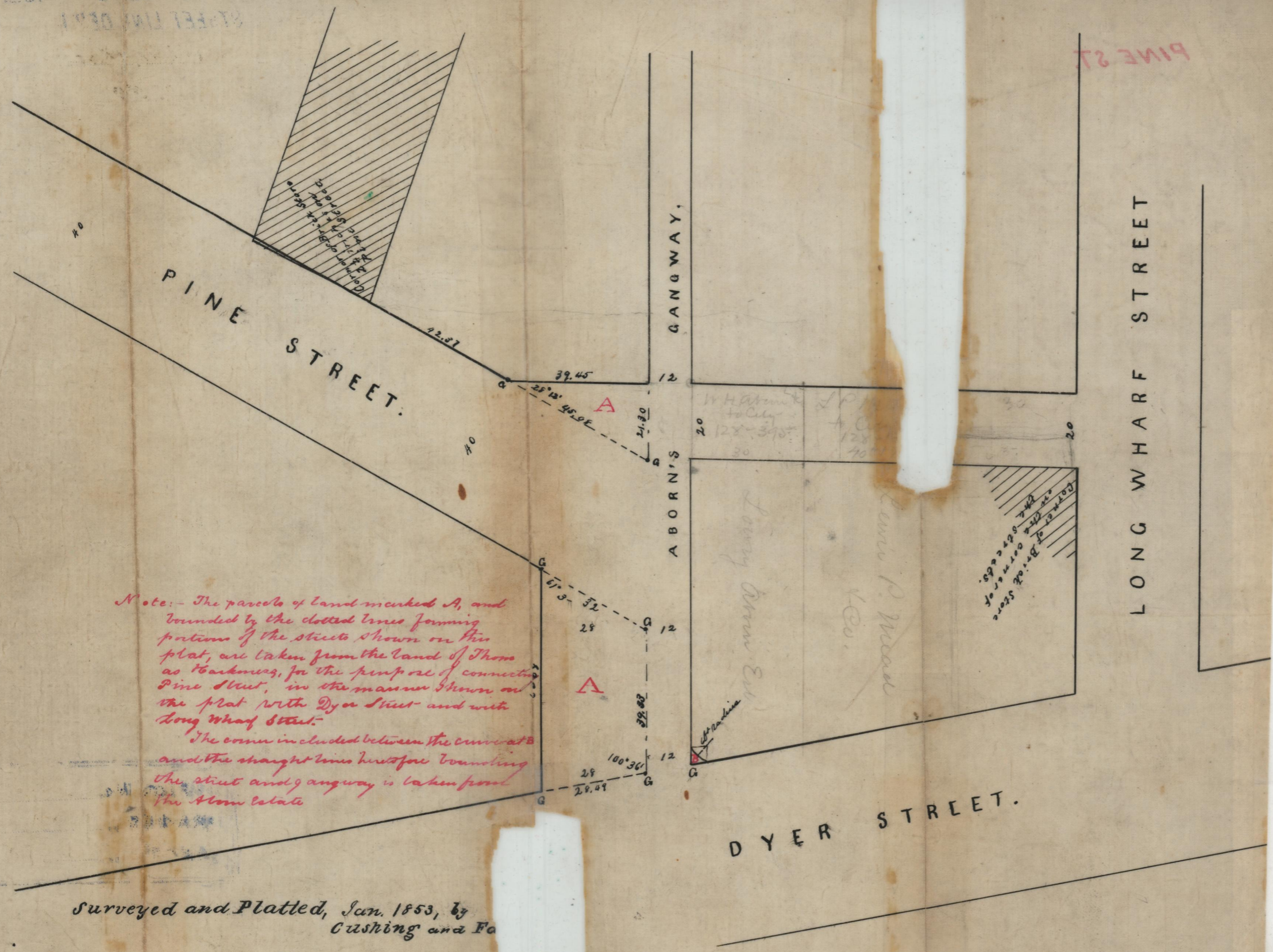


Jan. 1853
0350



Note: - The parcels of land marked A, and bounded by the dotted lines forming portions of the streets shown on this plat, are taken from the land of Thomas as Barker, for the purpose of connecting Pine Street, in the manner shown on the plat with Dyer Street and with Long Wharf Street.

The corner included between the curve at B and the straight line heretofore bounding the street and gangway is taken from the Atom lot.

W. H. Barker to City 12x-370'
James P. Meacham & Co.
Corner of Dyer St. & Long Wharf St. 12x-370'

OFFICE No. 340
DRAWER " 81
SHEET " B-28

Surveyed and Platted, Jan. 1853, by
Cushing and F.

Scale 30 feet to an inch
Measurements in feet and hundredths of a foot
The letter G denotes granite bounds

St. Book 3 page 38
Compared