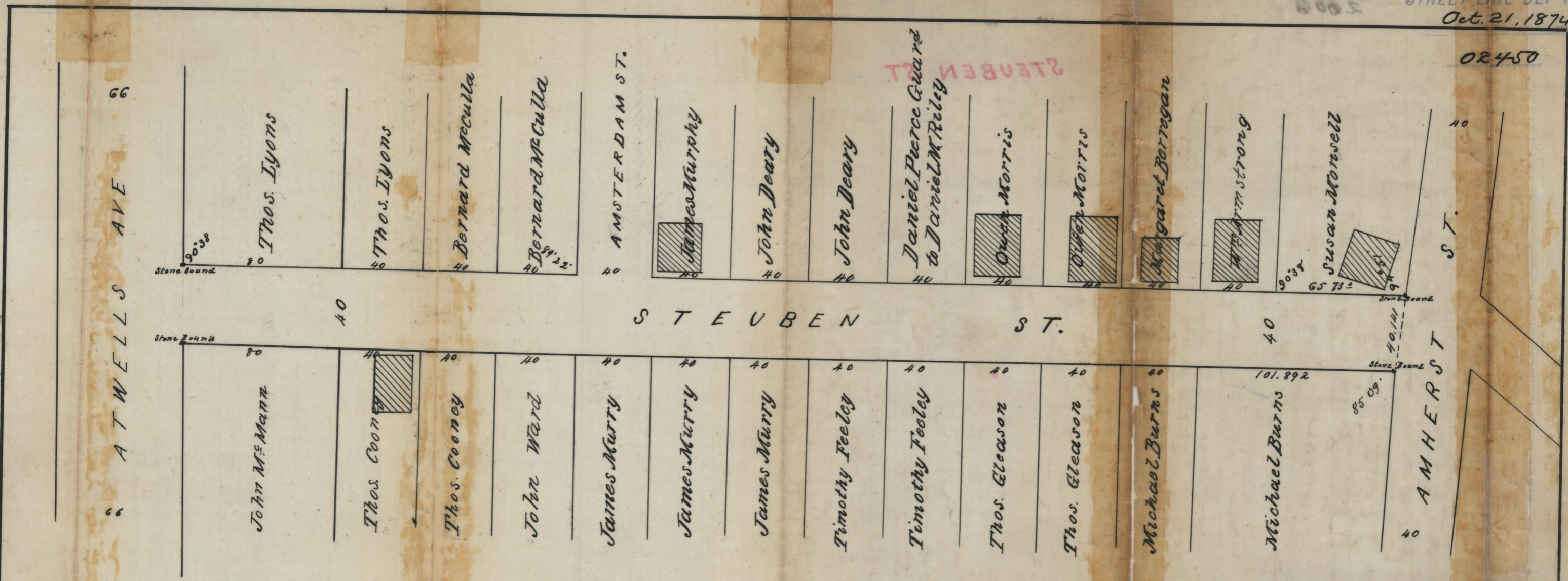


15818  
0005

02450



# MAP OF STEUBEN ST.

From Atwells Ave & Amherst St.

Made by order of the Street Committee of the Hon. Board of Aldermen Oct 21<sup>st</sup> 1874

**BY C. E. PAINE**

City Engineer  
Scale 50 ft per in.  
St. P. B. 5724

Received by the Board of Aldermen as a public highway December 10 1874 Witness Samuel W. Brown City Clerk

OFFICE NO. 2006  
DRAWER 81  
SHEET B-21

Compared.