

Apr. 19, 1876

03325

T2 A900

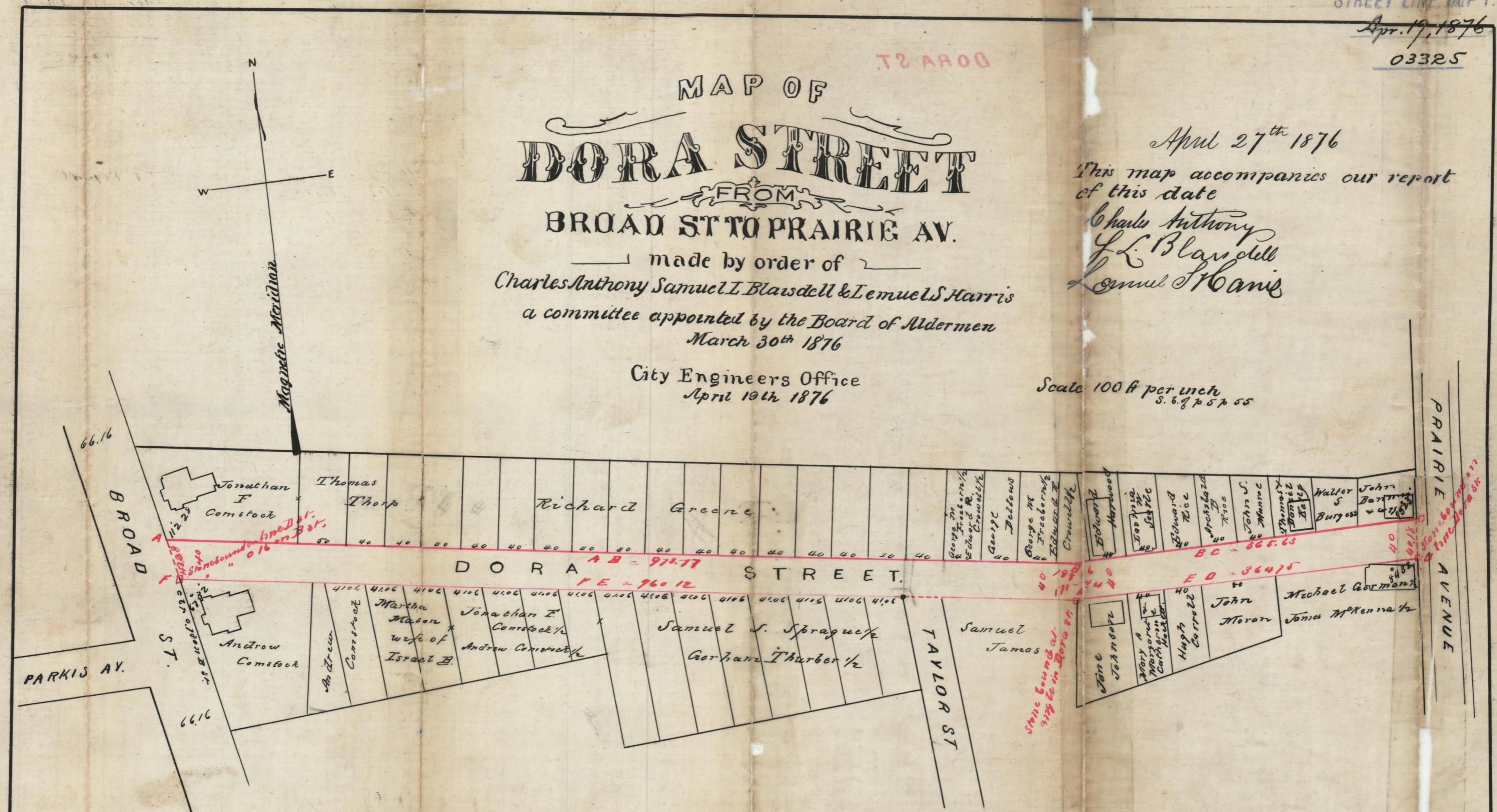
MAP OF
DORA STREET
FROM
BROAD ST TO PRAIRIE AV.

made by order of
Charles Anthony Samuel L. Blaisdell & Lemuel S. Harris
a committee appointed by the Board of Aldermen
March 30th 1876

City Engineers Office
April 19th 1876

April 27th 1876
This map accompanies our report
of this date
Charles Anthony
L. Blaisdell
Lemuel S. Harris

Scale 100 ft per inch
S. 6.7 p 57 55



(For Report see that Book to 3 page 295 etc)

OFFICE NO. 2730
DRAWER 81
SHEET B-15

Compared