

Oct. 28, 1875

MAP OF
DUDLEY ST.
(FROM PRAIRIE AVE)
TO PLAIN ST.
As laid out by

Charles Anthony Samuel L. Blaisdell
and Lemuel S. Harris

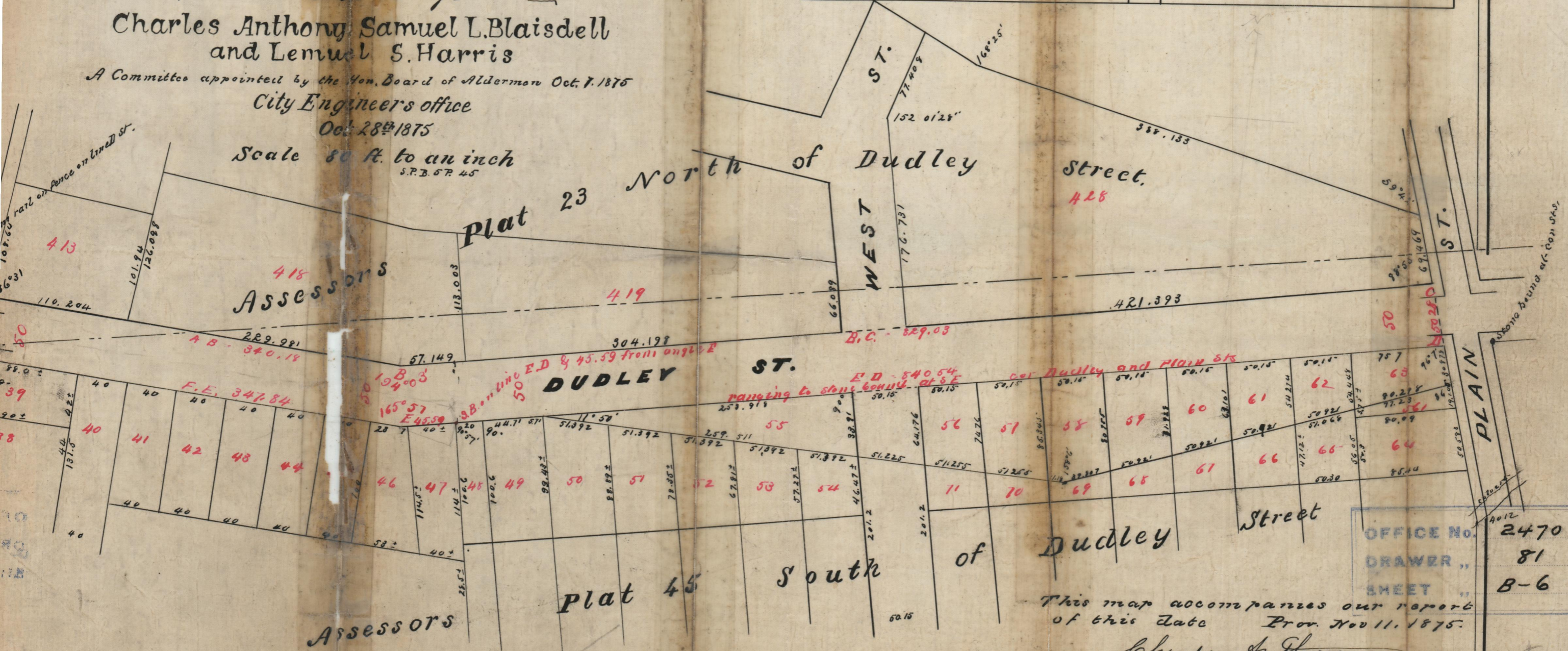
A Committee appointed by the Hon. Board of Aldermen Oct. 7, 1875

City Engineers office

Oct. 28th 1875

Scale 80 ft. to an inch
S.P.B. 57 45

Plat 23		Names of Owners		Plat 45	
lot	413	Anna A Ives 1/4 Hope B. Russell 1/4	lot	50	Nancy K Bishop
	418	Robert H Ives		51	" " "
	419	Anna A Ives 1/4 Hope B. Russell 1/4		52	" " "
	428	John Keegan		53	" " "
	39	" " "		54	" " "
	41	" " "		55	Robert H Ives
	42	" " "		56	Charlotte R. Goddard
	43	" " "		57	Anna A Ives 1/4 Hope B. Russell 1/4
	44	Nancy K Bishop		58	Robert H Ives
	45	" " "		59	" " "
	46	" " "		60	" " "
	47	" " "		61	Charlotte R. Goddard
	48	" " "		62	" " "
	49	" " "		63	" " "



OFFICE NO. 2470
DRAWER " 81
SHEET " B-6

This map accompanies our reports
of this date Prov. Nov 11, 1875.

Charles Anthony
Samuel L. Blaisdell
Lemuel S. Harris
COMMISSIONERS

Numbers in red refer to numbers
on Assessors Plats

(For Report see Street Book No 3 page 252-c.)

Compared