

Dec. 29, 1909. 036737

PLAT OF LAND ON WATERMAN, FERRY AND IVES STREETS,

Made for Adjoining Owners

October 27, 1865.

Card # 708 Recorder Office

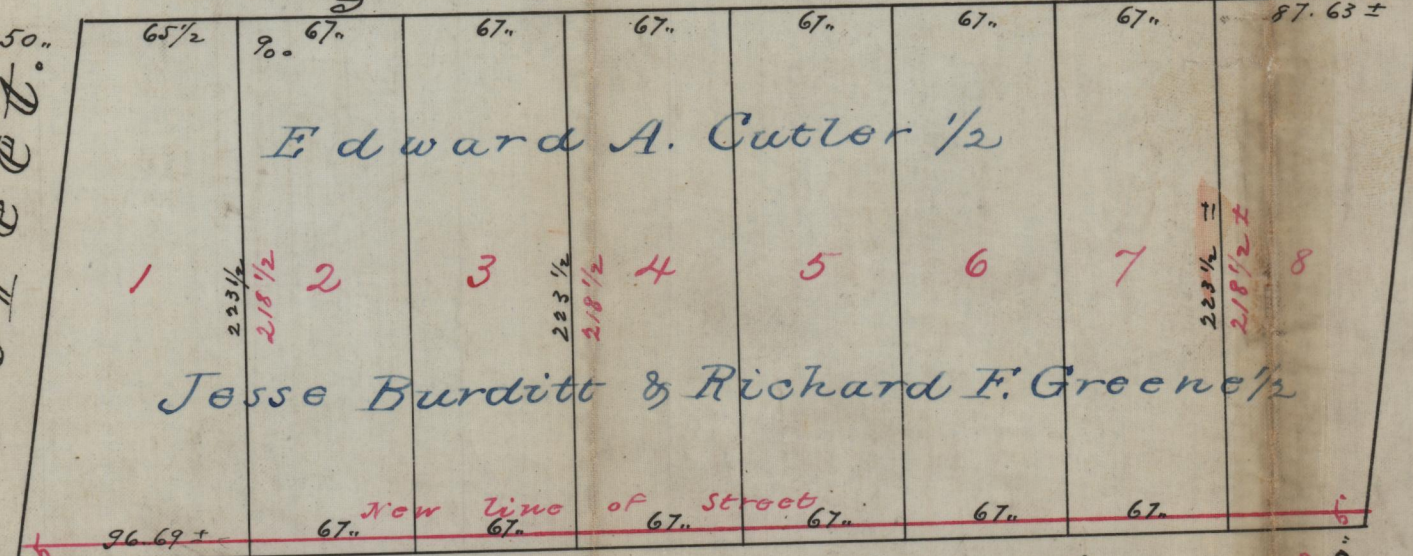
Scale 80 Feet per inch

St. P. B. 4 P 47
Line of Asylum Wall Wall

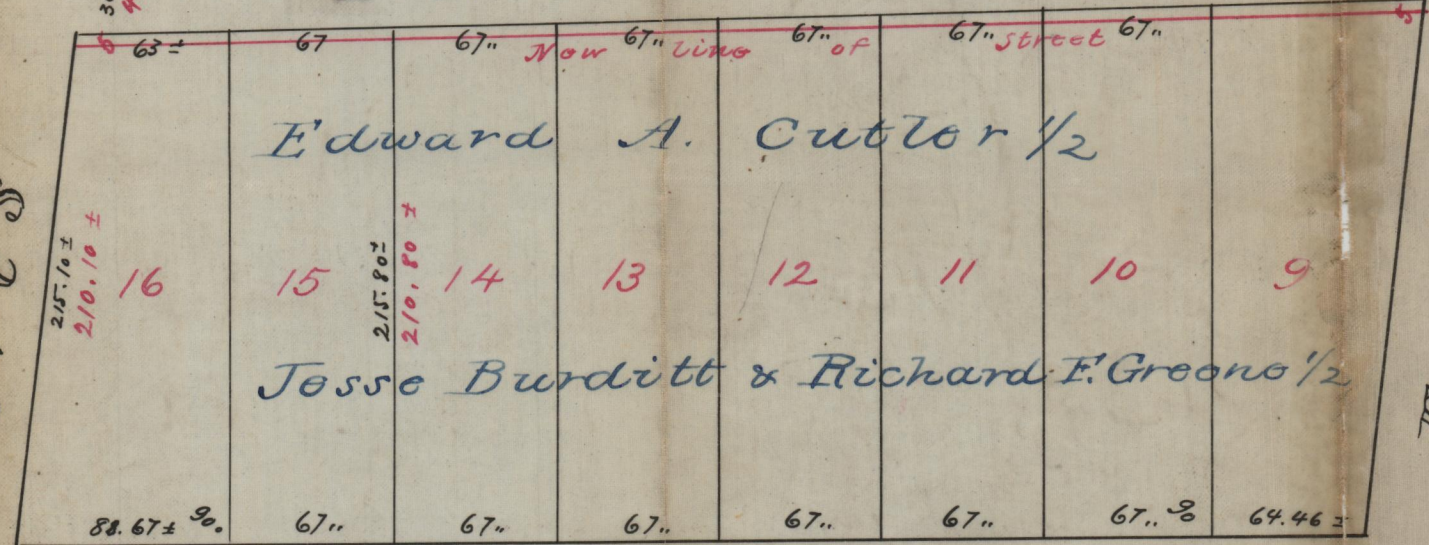
By C. E. PAINE

Line of Wall

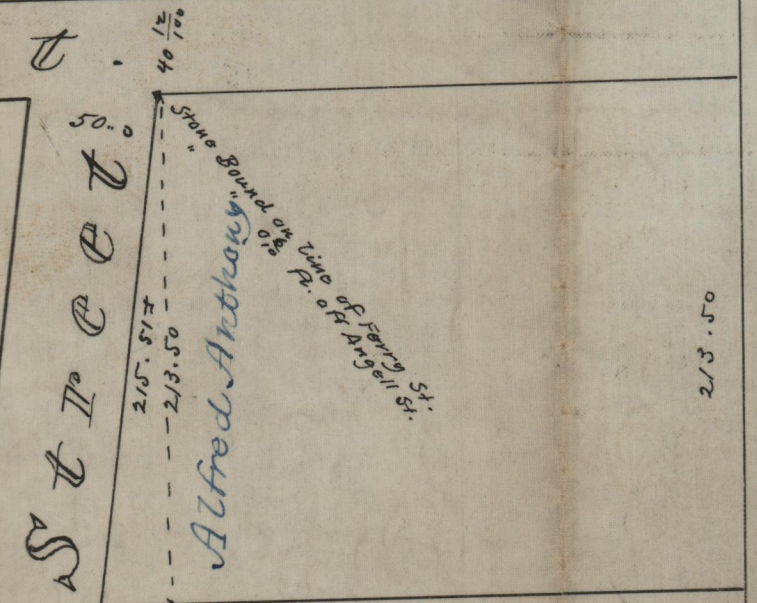
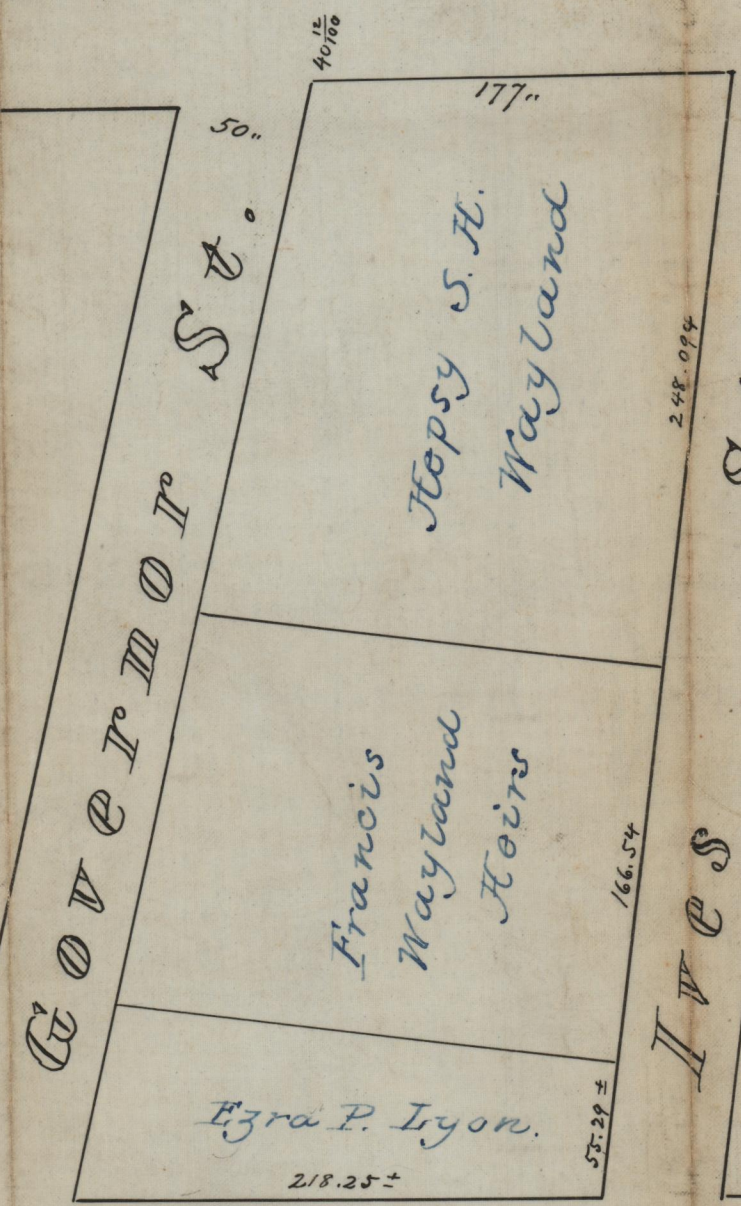
Angell Street



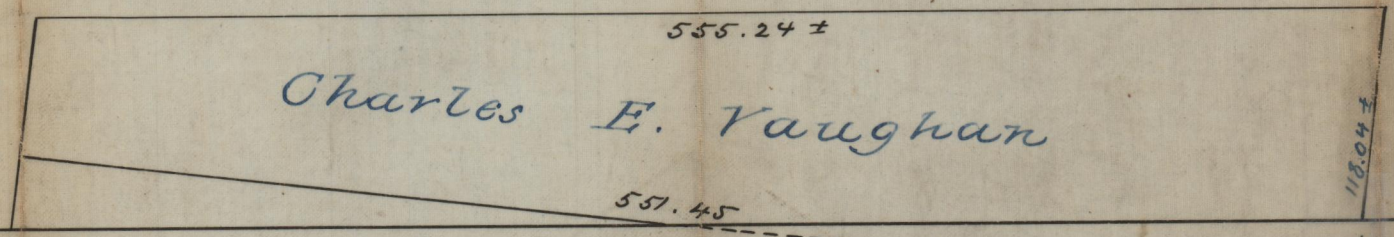
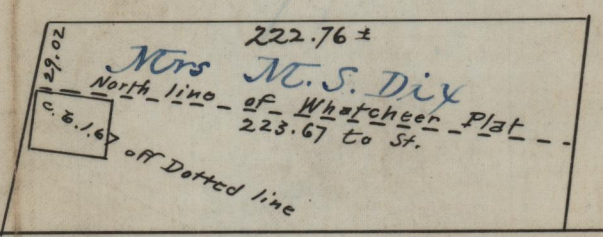
Private Street



Waterman Street



Waterman Street declared to be a public highway from
Deed of 1865 to Ferry Street December 5 1865 (See Plat 80
No 2 page 333) Map Surveyed by Boston City Clerk.



OFFICE No 626
DRAWN BY 81
SHEET Stone Bound A-10

Compared