

MAP OF

PRINTERY ST.

PRINTERY ST

FROM RANDALL ST TO NASH LANE

Made by order of the Board of Aldermen July 8, 1875.

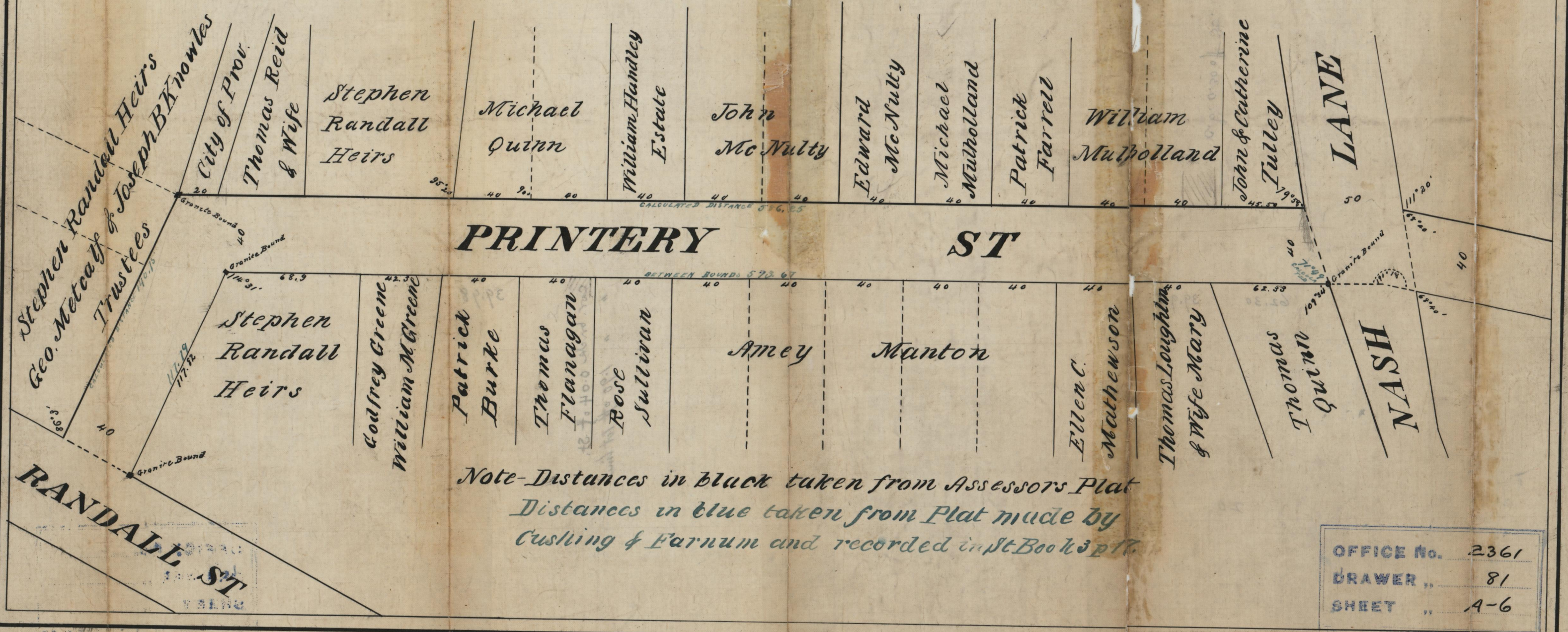
By C E Paine

City Engineer

Scale 50 feet per inch

St. Plat Book 5 page 35

Printery street from Randall street to
Nash lane, declared a public highway
by the Board of Aldermen July 8, 1875
Witness, Samuel W. Brown Clerk



Note - Distances in black taken from Assessors Plat
Distances in blue taken from Plat made by
Cushing & Farnum and recorded in St. Book 3 p. 17

OFFICE No.	2361
DRAWER	81
SHEET	A-6

Compared