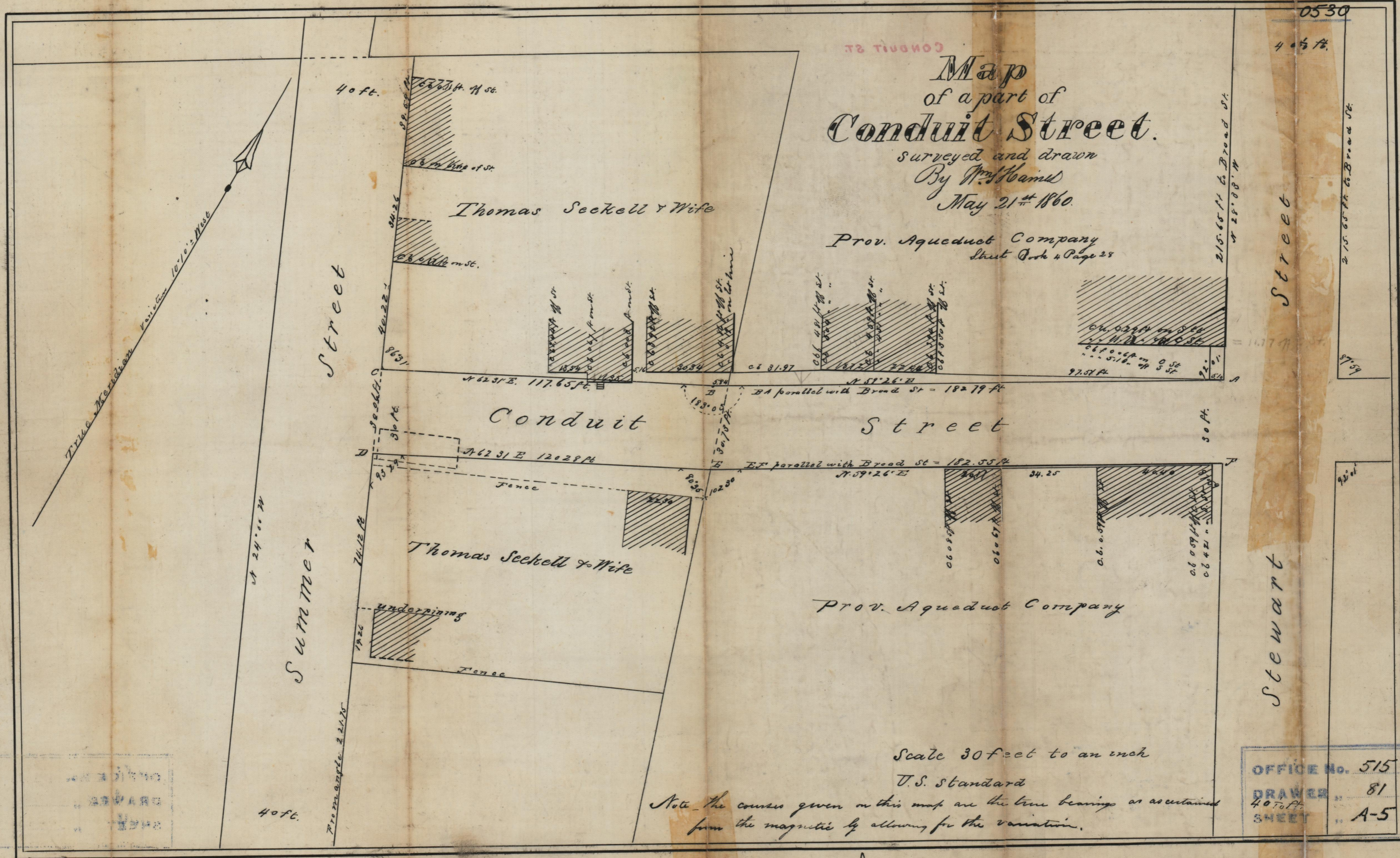


May 21 1860

Map of a part of Conduit Street.

Surveyed and drawn
By W. H. Hoams
May 21st 1860.

Prov. Aqueduct Company
Sheet Book 4 Page 28



Scale 30 feet to an inch

U.S. Standard

Note - The courses given on this map are the true bearings as ascertained from the magnetic by allowing for the variation.

OFFICE No.	515
DRAWER	81
40 TO FT SHEET	A-5

Recorded June 23. 1860

Witness Samuel W. Brown City Clerk

81
A-5

Compared