

MAP OF  
Admiral St. School Estate.

Scale, 20 ft. per inch.

PROVIDENCE, R. I.  
CITY ENGINEER'S OFFICE.  
CITY PROPERTY DEPT.

Nov. 24, 1903.

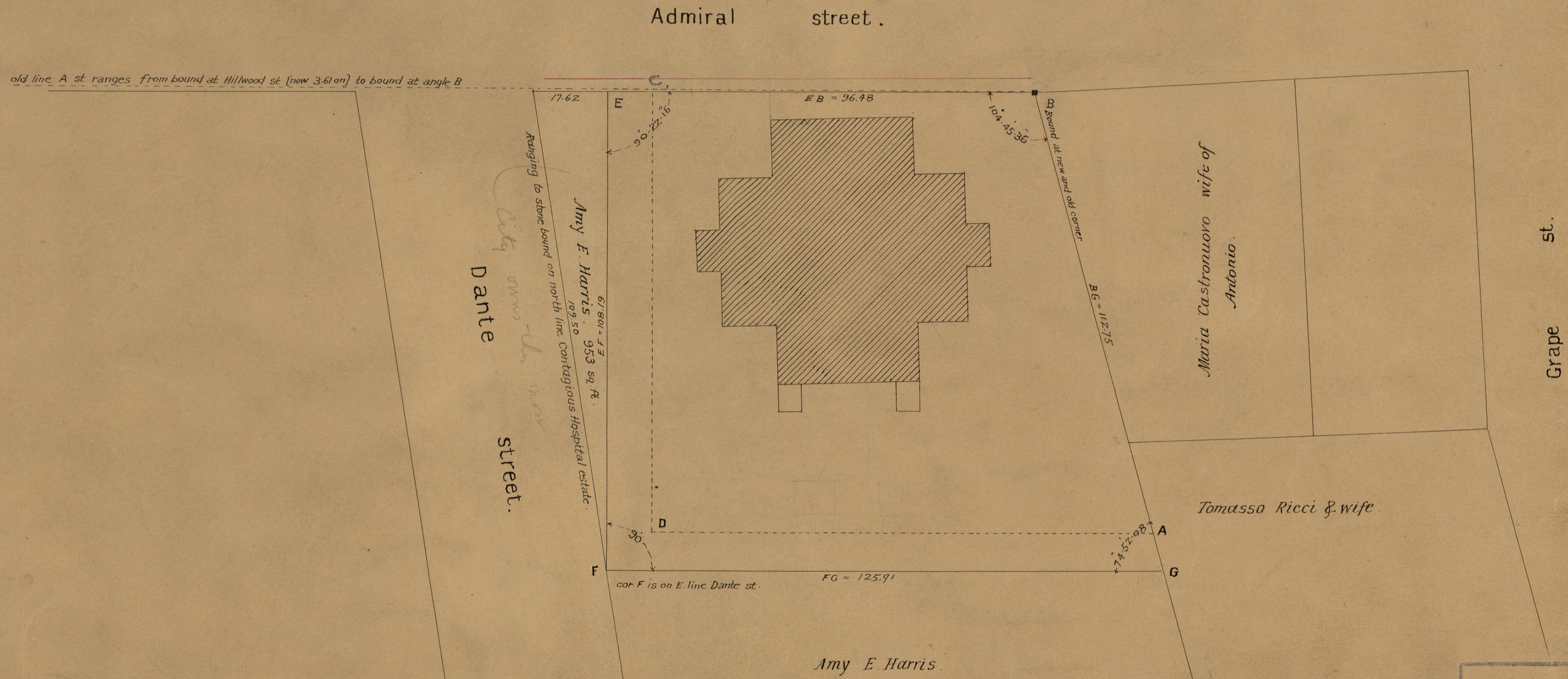
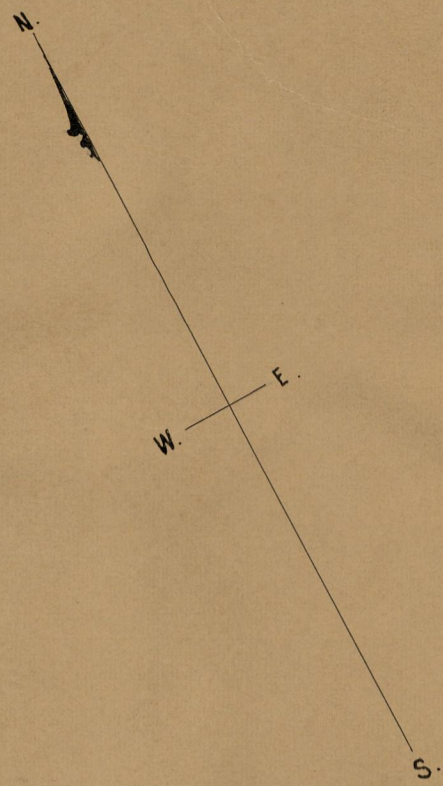
031865.

547

George H. Corliss conveyed to City of Providence Mar. 8, 1875 lot ABCD  
see Deed Book 252 page 251  
George H. Corliss conveyed to City of Providence, Aug. 14, 1884 lot ADCEFG  
see Deed Book 325 page 515

Stone bounds A D & C set May 19, 1876, stone at B removed from former  
location on same day  
Stone bounds placed at G F E Sept. 1884.

Area BEFG = 12070 sq. ft., being Lot No. 590 on Assessor's Plat 70



OFFICE No. 17484  
DRAWER 774  
SHEET 9