

Map of  
Smith St. Gravel Lot.  
Scale, 50 ft. per inch.

CITY ENGINEERS OFFICE  
CITY PLANNING DEPT.

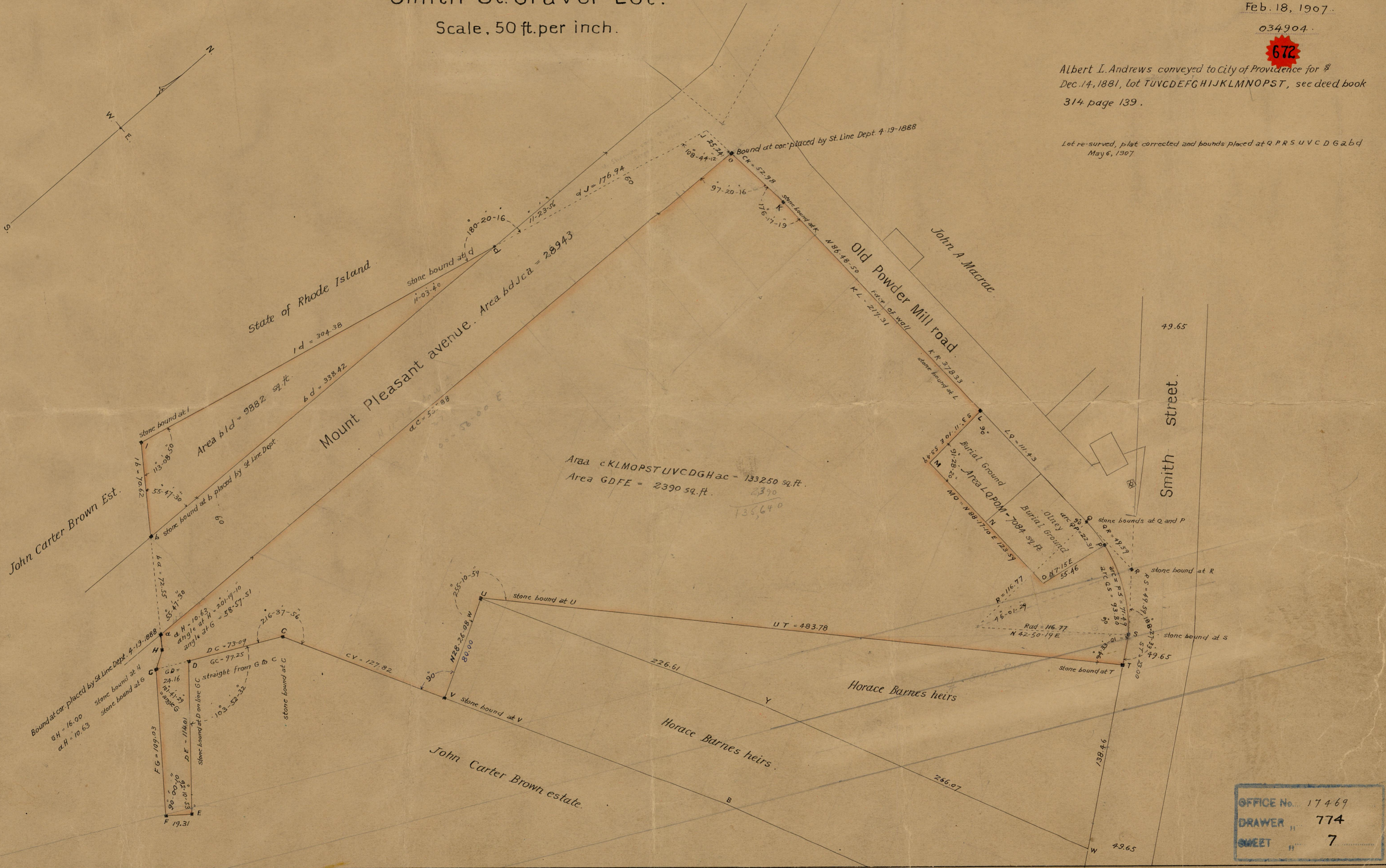
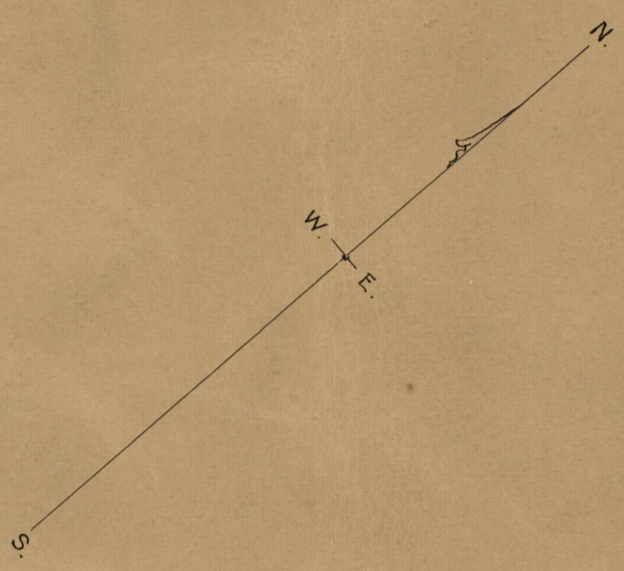
Feb. 18, 1907.

034904.

**672**

Albert L. Andrews conveyed to City of Providence for \$  
Dec. 14, 1881, lot TUVCD EFGHIJKLMNOST, see deed book  
314 page 139.

Lot re-surveyed, plat corrected and bounds placed at Q P R S U V C D G a b c d  
May 6, 1907.



OFFICE No. 17469  
DRAWER " 774  
SWEET " 7