

Map of  
Ring St. School E. St.  
Playground  
Belonging to  
City of Providence,

City Engineer's Office.

transferred to Park Dept. for Playground  
purposes by Res. No 307 Series 1929 Scale 30 ft. per inch.

Bounds were placed at D.C.F. March 21<sup>st</sup> to 22<sup>d</sup> 1894.

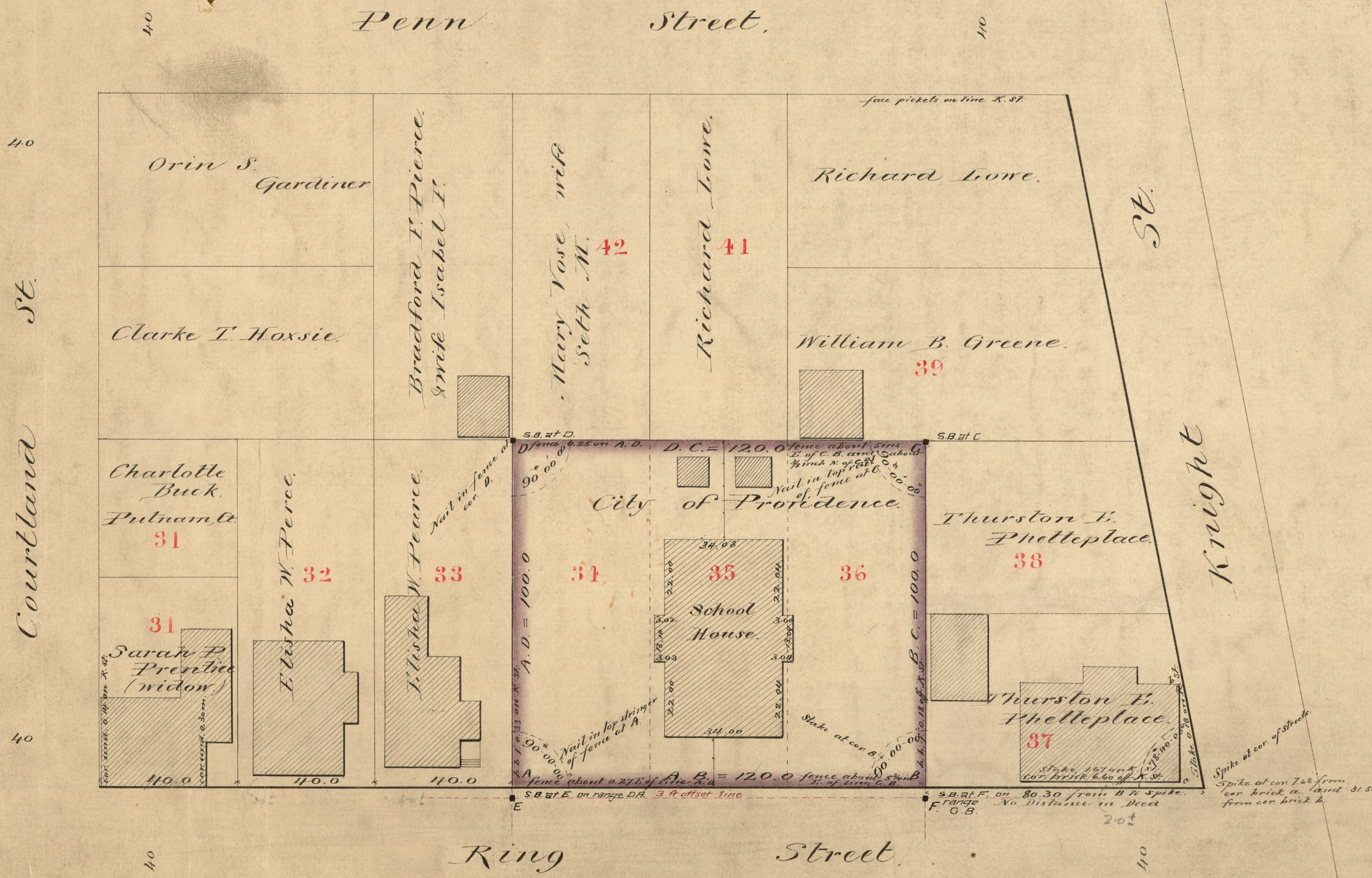
Scale 30

PROVIDENCE, R. I.  
CITY ENGINEER'S OFFICE,  
CITY PROPERTY DEPT.  
May 1880  
05376

Lot A. B. C. D. was conveyed to the City of Prov.  
by Thurston F. Phetteplace, June 26, 1855, being  
lots 34, 35, & 36, on the Wm. Almy Plat. No further  
description given. The same being also  
lot No. 35 on Assessors Plat No. 33.

For conveyance mentioned above, see D. Bk  
141, p. 165, dated June 26, 1855.

Numbers in red refer to the Wm. Almy Plat, see  
Card 58 Records Office,



OFFICE No. 4512  
DRAWER " 774  
SHEET " 48

OFFICE No. 4512