

Red notes added July 25, & Dec. 12th 1895.
 Blue notes added Aug. 22, 1899.

PROVIDENCE, R. I.
 CITY ENGINEER'S OFFICE
 CITY PROPERTY DEPT.

SEPT. 1876

03478

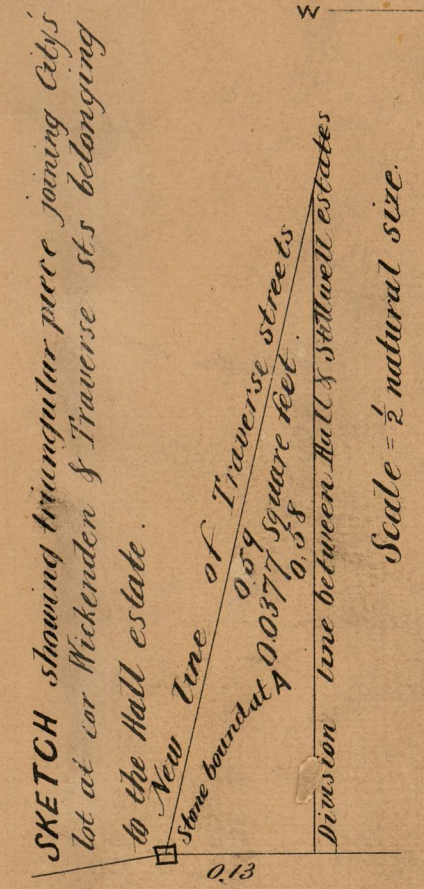
ESTATE of the 3rd DISTRICT POLICE and FIRE ENGINE STATION

City Engineer's Office
 SEPT. 1876.

Scale 20 ft per inch.

City of Providence bought of Arba B. Dike April 3rd 1862 May 1, 1872
 lot AFH GDE (excepting small triangle at cor Wickenden &
 Traverse sts see Sketch) being lots Nos 42, 43, 44 & a small strip
 adjoining lot No 42 on the Christopher Sheldon Plat recorded
 in Deed Book 27 page 574 in Office of Recorder of Deeds
 See Deed Book 199 page 69

Being also lot No 471 on Assessors Plat 16 and
 containing 1128 square feet.



Ranging from stone bound 2 1/2 ft east of cor Benefil street.



OFFICE No.	2865
DRAWER	774
SHEET	4

See Plan 770 B-32 for Portion sold 15 1877

COMPARED
 Charles E. Sain
 Wm. G. Brewer
 Ass't Engr.