

March 18, 1914.

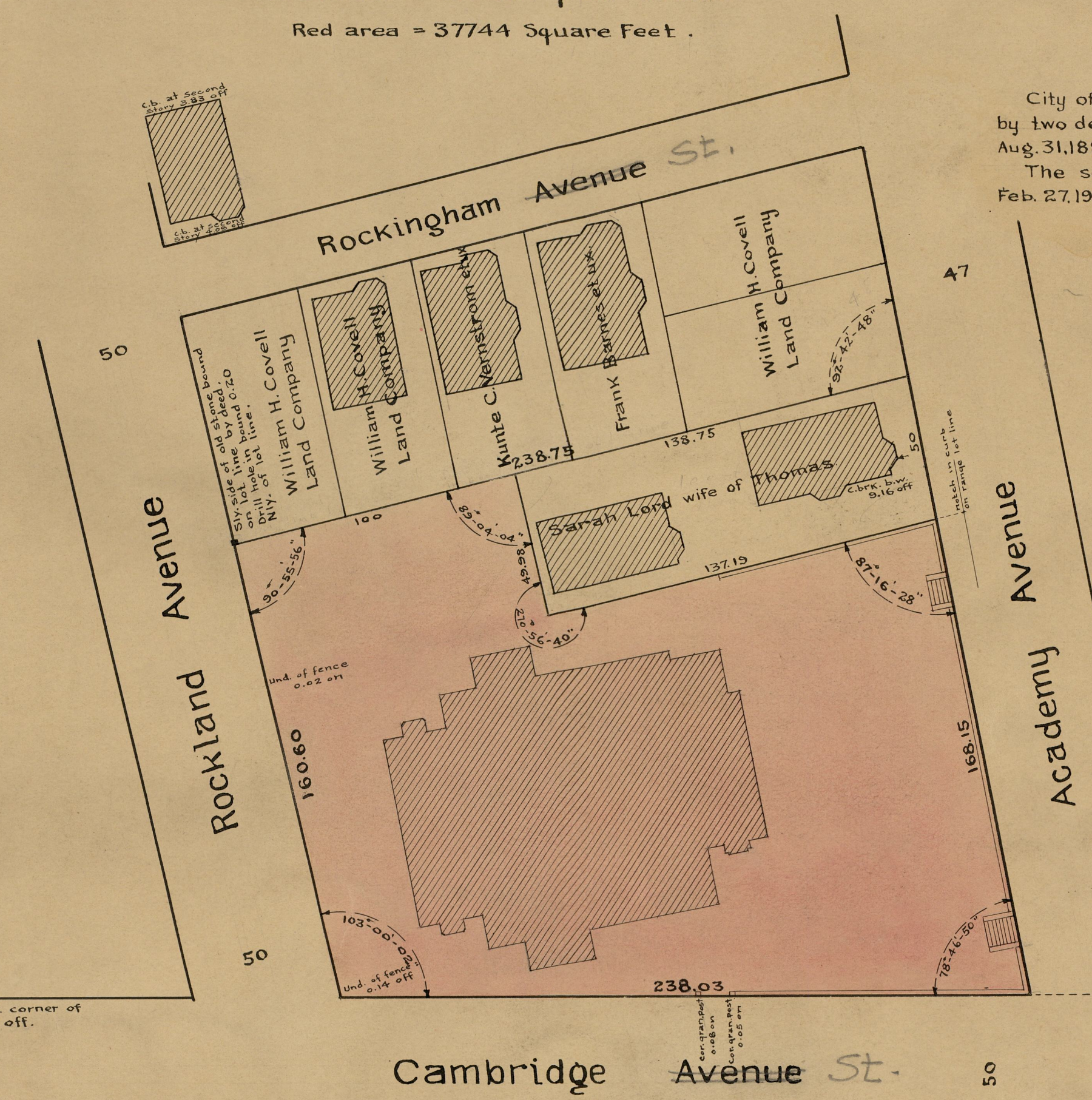
040017



Map of
Academy Avenue School Estate.
Scale = 40 ft. per inch.

Red area = 37744 Square Feet.

City of Providence bought this estate of William H. Bowen by two deeds. The first covers the bulk of the lot is dated Aug. 31, 1887 and recorded in deed book 341 at page 521. The second covers the lot at the N.W. corner is dated Feb. 27, 1914 and recorded in deed book 543 at page 13.



Ranging from bottom board of house at corner of
Sears Ave. & Cambridge Ave. as 2.55 off.

OFFICE No. 19256
DRAWER 774
SHEET 34