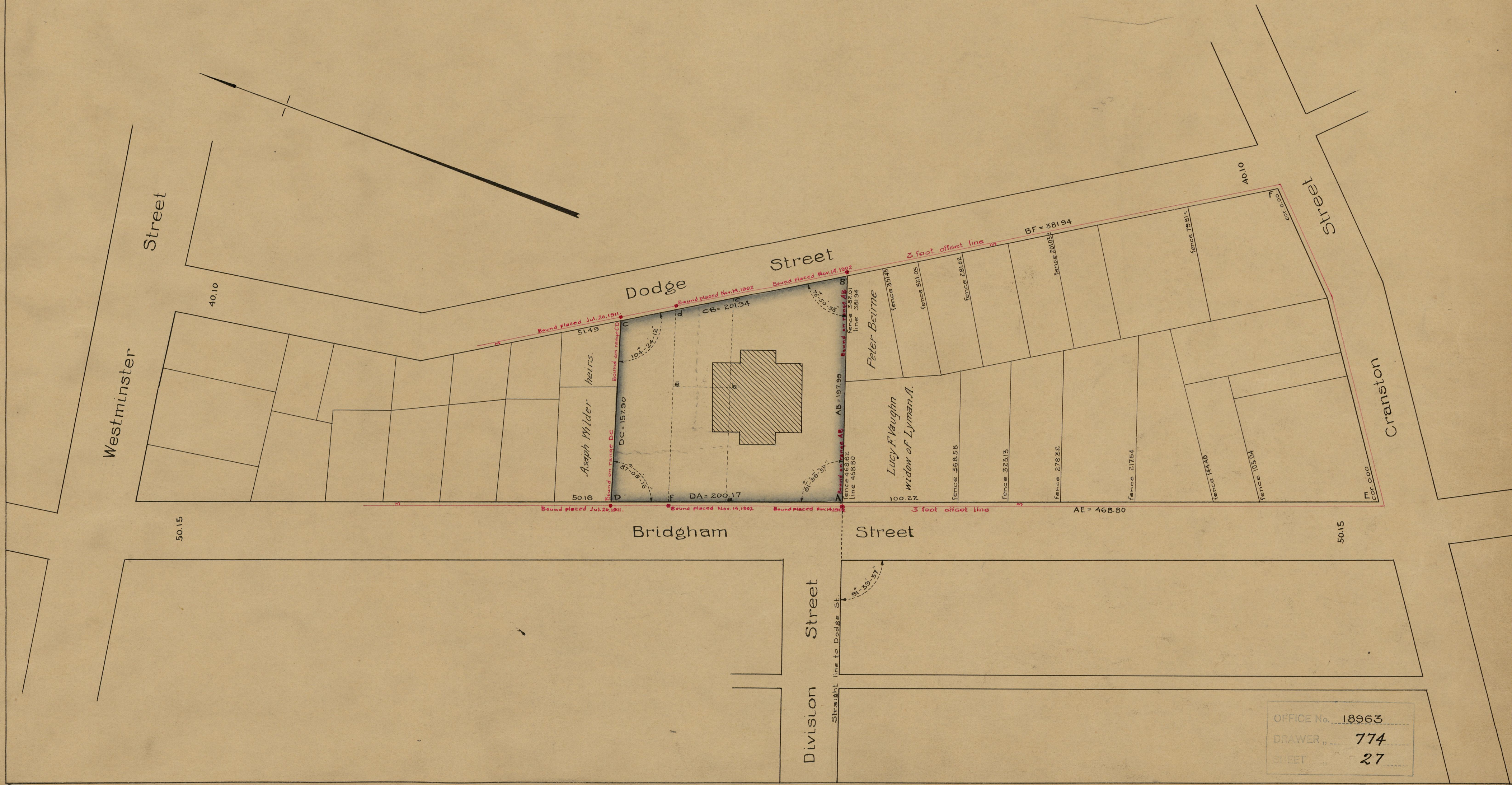


City of Providence bought of John M. Francis April 18, 1856, lot AacB see D.B. 143 p. 449.
 City of Providence bought of Amos Lee April 21, 1856, lot abef, see D.B. 143 p. 445.
 City of Providence bought of Henry Gilbert April 21, 1856, lot cbed, see D.B. 143 p. 447.
 City of Providence bought of Flora D. Spink June 30, 1911, lot DfdC, see D.B. 520 p. 217.

Map of
 Bridgman St. School Estate
 as enlarged in 1911.
 Scale 60 ft. per inch
 35249 sq. ft.

PROVIDENCE, R. I.
 CITY ENGINEER'S OFFICE
 CITY PROPERTY DEPT.
 January 6, 1913
 039157

917



OFFICE No. 18963
 DRAWER 774
 SHEET 27