

Mar. 13, 1912

038492

965

MAP OF Webster Ave. School Est.

Scale, 40 ft. per inch.

Area ABCD = 40020 sq.ft.

Patrick J. Nangle sold to City of Prov. June 7, 1904 Lot No. 40 on section C Plain Farm Plat D.B. 461 p. 65. \$700.

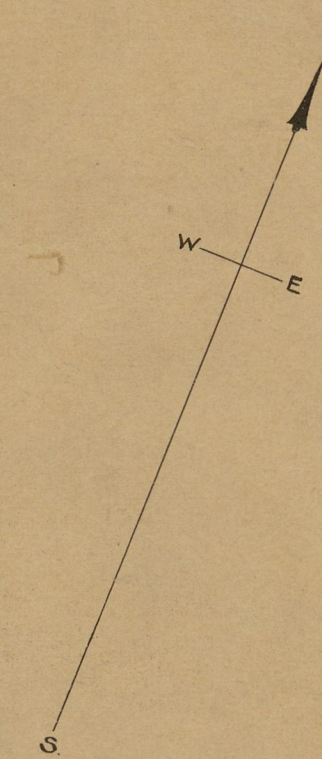
Charles Greenhalgh et ux sold to City of Prov. Apr. 23, 1904, Lot No. 42 on Section C Plain Farm Plat. D.B. 461 p. 440. \$1200.

Nicholas Molter et al. sold to City of Prov. Aug. 27, 1904, Lots No. 2 and 41 on section C Plain Farm Plat D.B. 465 p. 291. \$1600.

John Riley sold to City of Prov. June 7, 1904, Lots Nos. 1 and 3 on section C Plain Farm Plat D.B. 461 p. 444. \$2000.

Mary A. Conroy and Sarah J. Conroy sold to City of Prov. Jan. 17, 1912, Lot No. 4 on section C Plain Farm Plat D.B. 526 p. 15. \$900.

Thomas F. Quinn sold to City of Prov. Jan. 18, 1912, Lot No. 39 on section C Plain Farm Plat D.B. 525 p. 14. \$450.



50

Sterling ave.

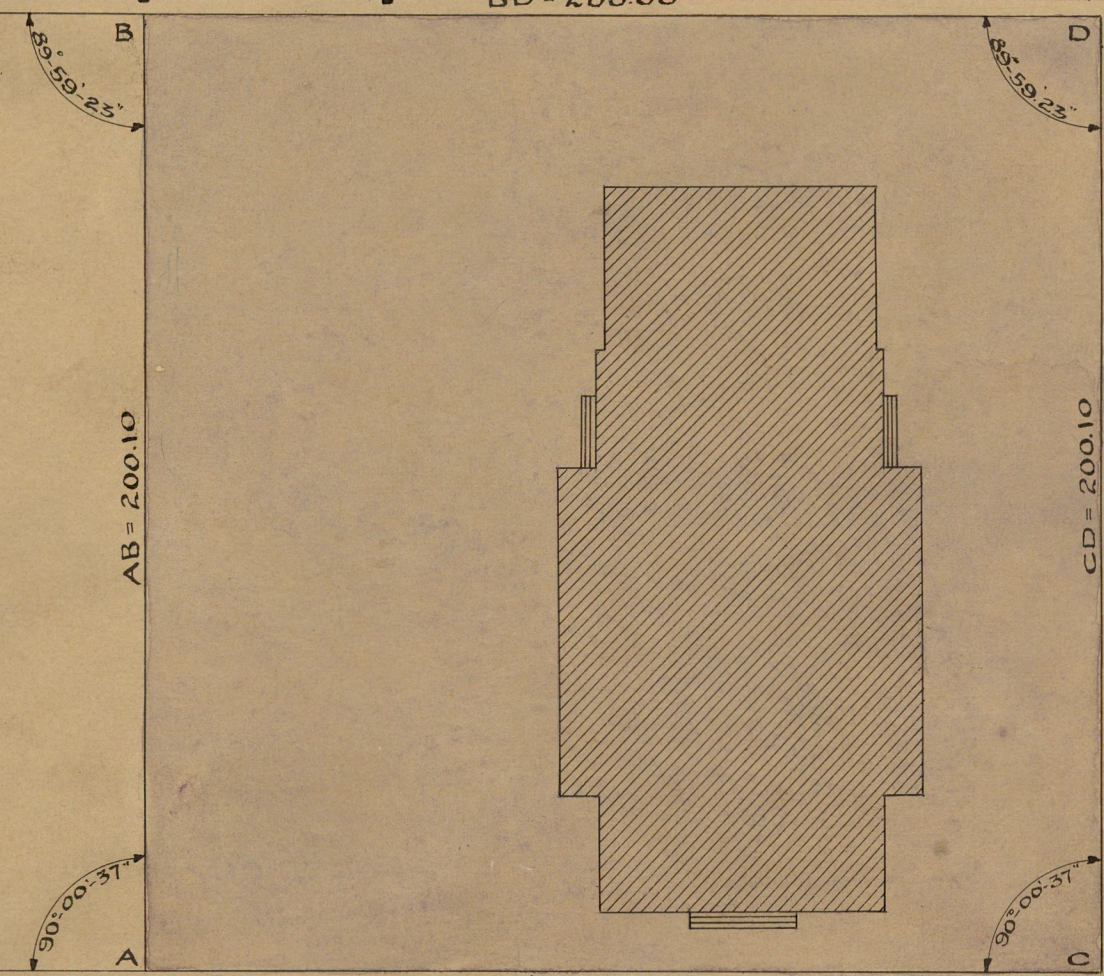
50

3 ft. Offset Line

49.96 SB to SB

BD = 200.00

153.04 SB to SB



AB = 200.10

CD = 200.10

Be and N of 185° 2'

Be and N of 185° 2'

3 ft. Offset Line

Webster ave.

40

Clarence st.

40

3 ft. Offset Line

50.01 SB to SB

AC = 200.00

152.99 SB to SB

OFFICE No. 18775

DRAWER 774

SHEET 26

60